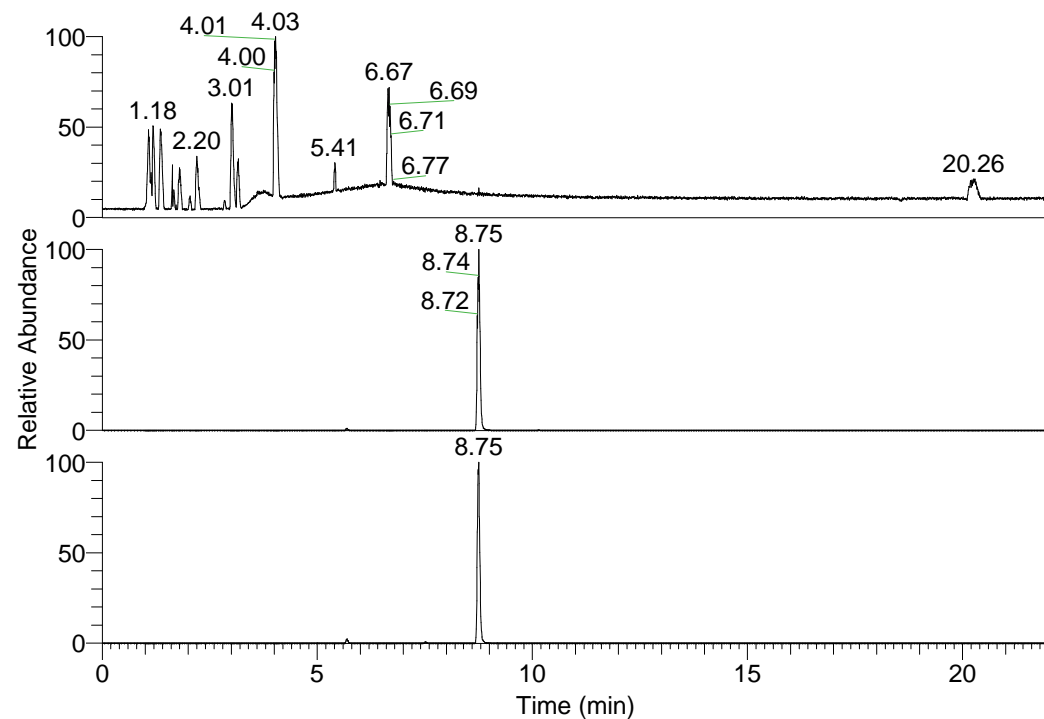


RT: 0.00 - 22.01



NL: 1.58E8  
 Base Peak m/z=  
 100.00000-1500.00000 F:  
 FTMS + p ESI Full ms  
 [100.00-1500.00] MS  
 Egrestis\_HDX

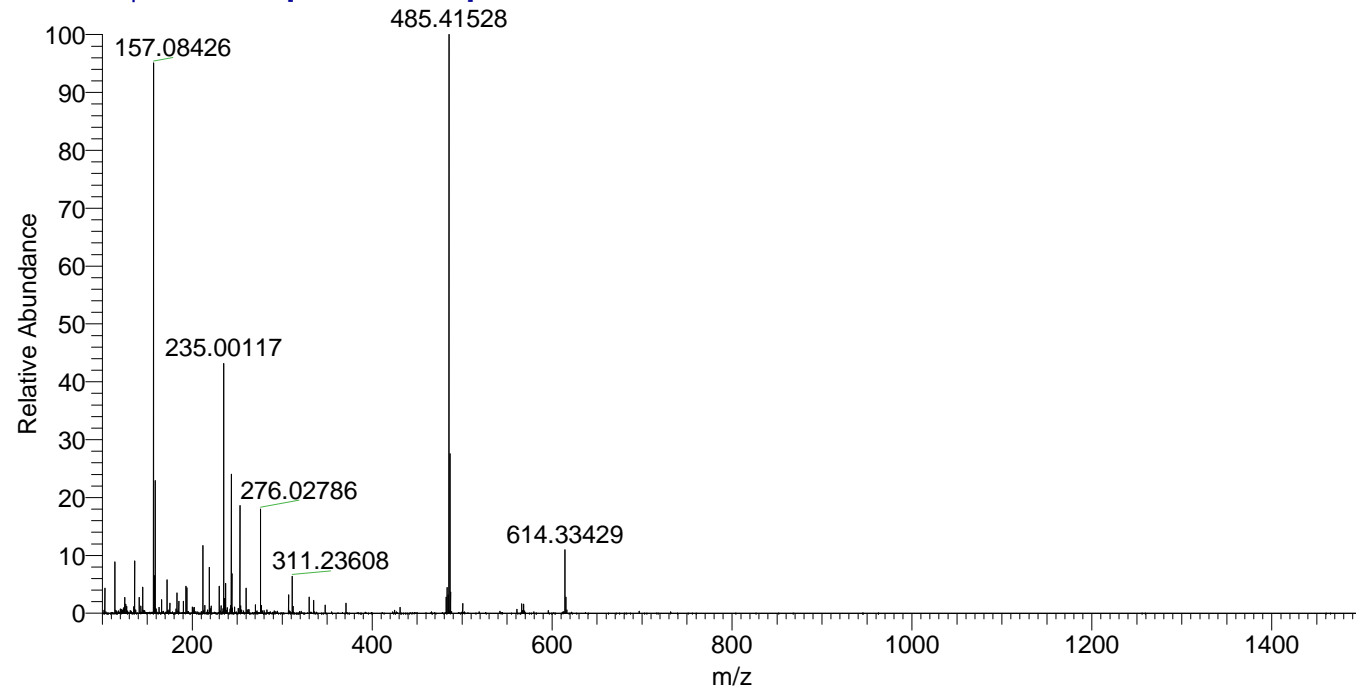
NL: 2.60E7  
 Base Peak m/z=  
 485.41124-485.41610 F:  
 FTMS + p ESI Full ms  
 [100.00-1500.00] MS  
 Egrestis\_HDX

NL: 5.07E6  
 Base Peak m/z=  
 243.71266-243.71510 F:  
 FTMS + p ESI Full ms  
 [100.00-1500.00] MS  
 Egrestis\_HDX

Egrestis\_HDX#1416 RT: 8.75  
 T: FTMS + p ESI Full ms [100.00-1500.00]  
 m/z= 485.00000-486.00000

m/z	Intensity	Relative	Delta (ppm)	Composition
485.41528	20268128.0	100.00	1.27	C <sub>24</sub> H <sub>35</sub> <sup>2</sup> H <sub>9</sub> O <sub>2</sub> N <sub>8</sub>
			-1.92	C <sub>24</sub> H <sub>37</sub> <sup>2</sup> H <sub>8</sub> O <sub>2</sub> N <sub>8</sub>
			4.46	C <sub>24</sub> H <sub>33</sub> <sup>2</sup> H <sub>10</sub> O <sub>2</sub> N <sub>8</sub>

Egrestis\_HDX #1416 RT: 8.75 AV: 1 NL: 1.98E7  
 T: FTMS + p ESI Full ms [100.00-1500.00]



Egrestis\_HDX #1416 RT: 8.75 AV: 1 NL: 1.98E7  
 T: FTMS + p ESI Full ms [100.00-1500.00]

