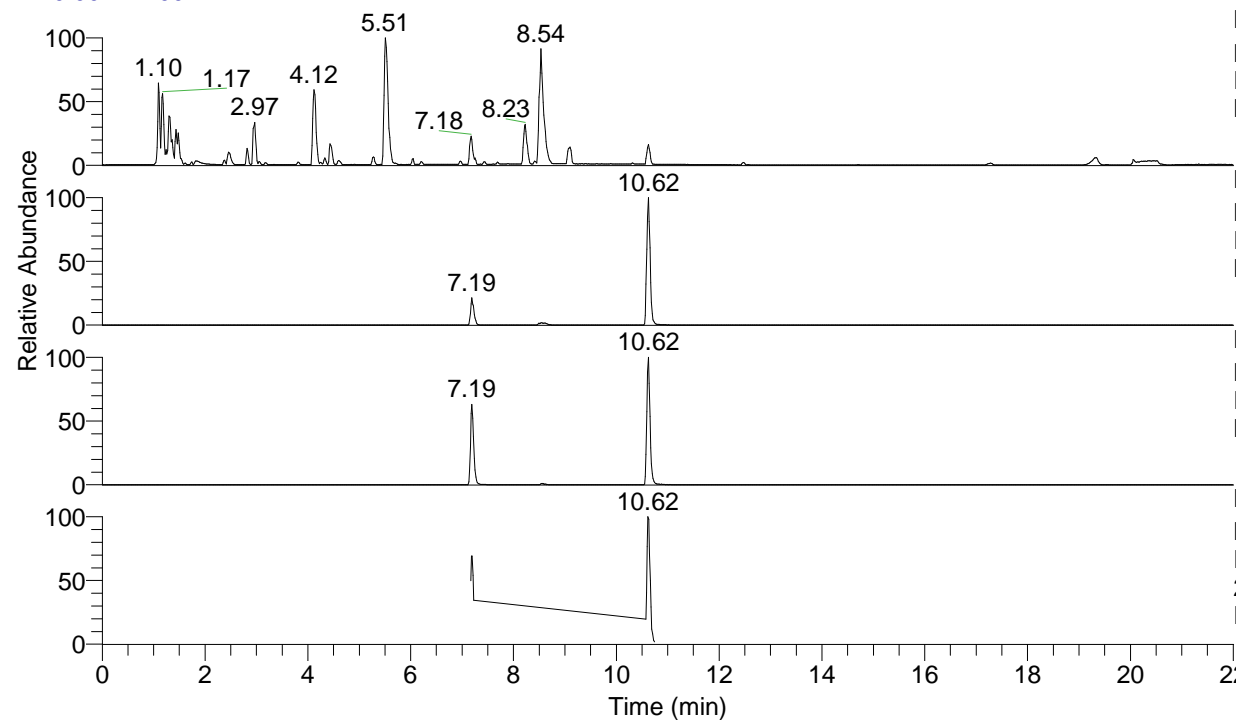


RT: 0.00 - 22.00



NL: 8.71E7  
 Base Peak m/z= 100.00000-1500.00000 F:  
 FTMS + p ESI Full ms [100.00-1500.00]  
 MS Eagrestis

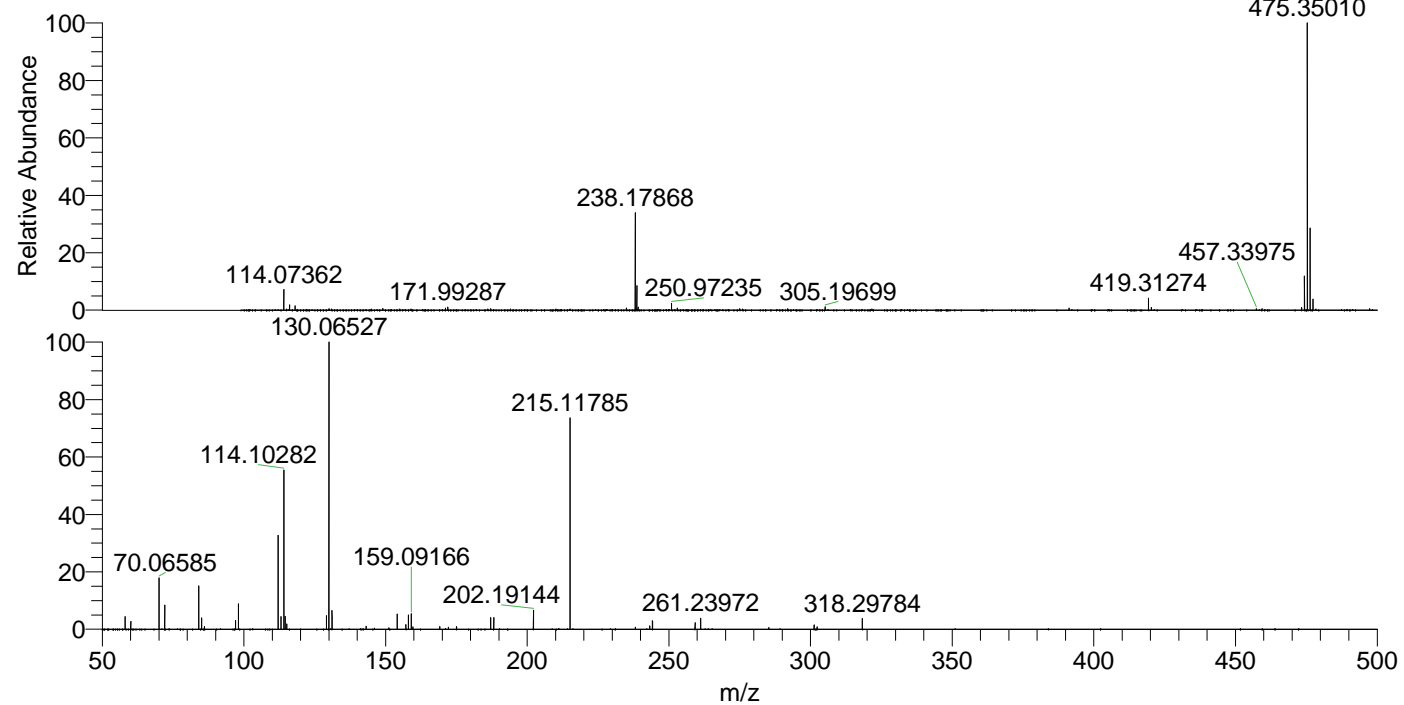
NL: 1.43E7  
 Base Peak m/z= 475.34615-475.35565 F:  
 FTMS + p ESI Full ms [100.00-1500.00]  
 MS Eagrestis

NL: 4.61E6  
 Base Peak m/z= 238.17698-238.18174 F:  
 FTMS + p ESI Full ms [100.00-1500.00]  
 MS Eagrestis

NL: 6.43E5  
 Base Peak m/z= 50.00000-1500.00000 F:  
 FTMS + p ESI d Full ms2  
 238.18@hcd35.00 [50.00-505.00] MS  
 Eagrestis

Eagrestis#4242-4287 RT: 10.58-10.69  
 F: FTMS + p ESI d Full ms2 238.18 ...  
 m/z= 50.00000-1000.00000

m/z	Intensity	Relative
58.06598	14421.5	4.37
60.05642	8540.2	2.59
70.06585	58788.4	17.80
72.08152	27180.8	8.23
84.08138	50189.2	15.19
85.07669	12702.3	3.85
86.06065	2947.1	0.89
97.07649	9647.8	2.92
98.09698	28952.5	8.76
112.08733	23452.7	7.10
112.11242	106076.1	32.11
113.10773	14515.9	4.39
114.09132	5325.4	1.61
114.10282	182735.3	55.31
114.61296	14358.7	4.35
115.12330	5699.1	1.73
129.13889	14944.6	4.52
130.06527	330354.1	100.00
131.11811	21194.8	6.42
131.12902	6249.7	1.89
143.12944	3413.3	1.03
151.13919	1715.2	0.52
154.13391	17274.7	5.23
157.14483	4995.3	1.51
158.05996	16319.9	4.94
159.09167	17623.5	5.33
159.65268	2588.1	0.78
169.16993	3047.2	0.92
172.18115	2315.2	0.70
175.06308	3542.8	1.07
187.08649	12807.3	3.88
188.18751	13122.6	3.97
202.19146	21957.8	6.65
215.11784	238938.7	72.33
238.17902	2428.8	0.74
243.25460	3863.6	1.17
244.21338	9937.6	3.01
259.24964	7166.8	2.17
261.23972	12525.6	3.79
285.27695	1847.1	0.56
301.27069	4772.8	1.44
302.30195	2608.3	0.79
318.29784	12189.9	3.69



NL: 1.35E7  
 Eagrestis#4261 RT: 10.62  
 AV: 1 T: FTMS + p ESI  
 Full ms [100.00-1500.00]

NL: 3.55E5  
 Eagrestis#4241-4282 RT:  
 10.58-10.68 AV: 8 F:  
 FTMS + p ESI d Full ms2  
 238.18@hcd35.00  
 [50.00-505.00]