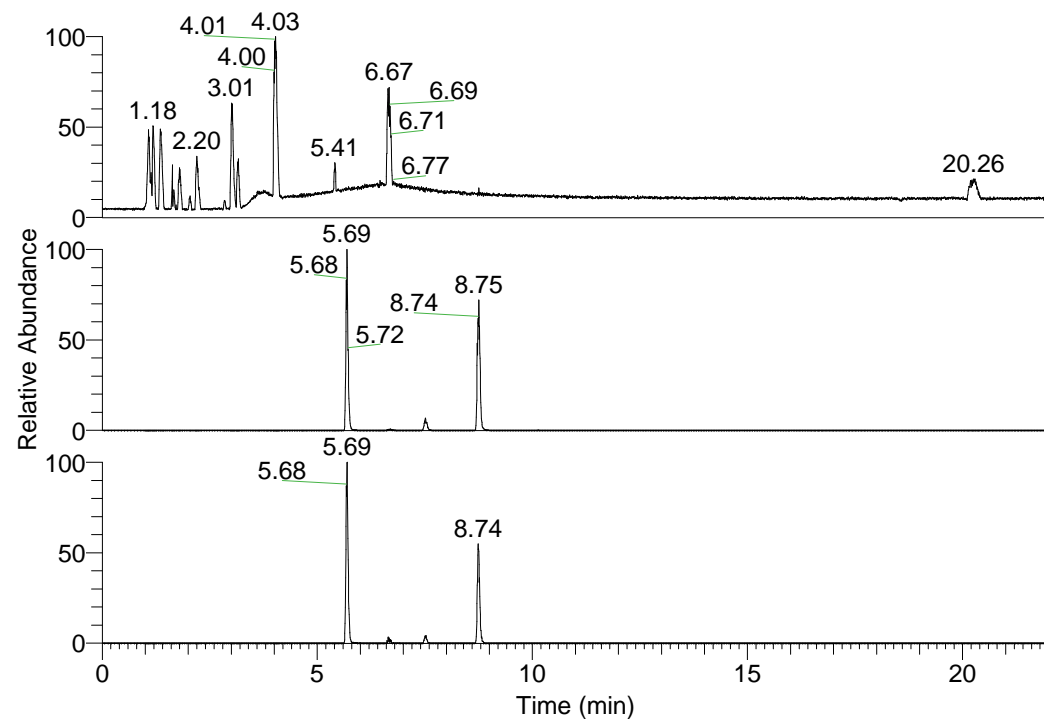


RT: 0.00 - 22.01



NL: 1.58E8
 Base Peak m/z=
 100.00000-1500.00000 F:
 FTMS + p ESI Full ms
 [100.00-1500.00] MS
 Egrestis_HDX

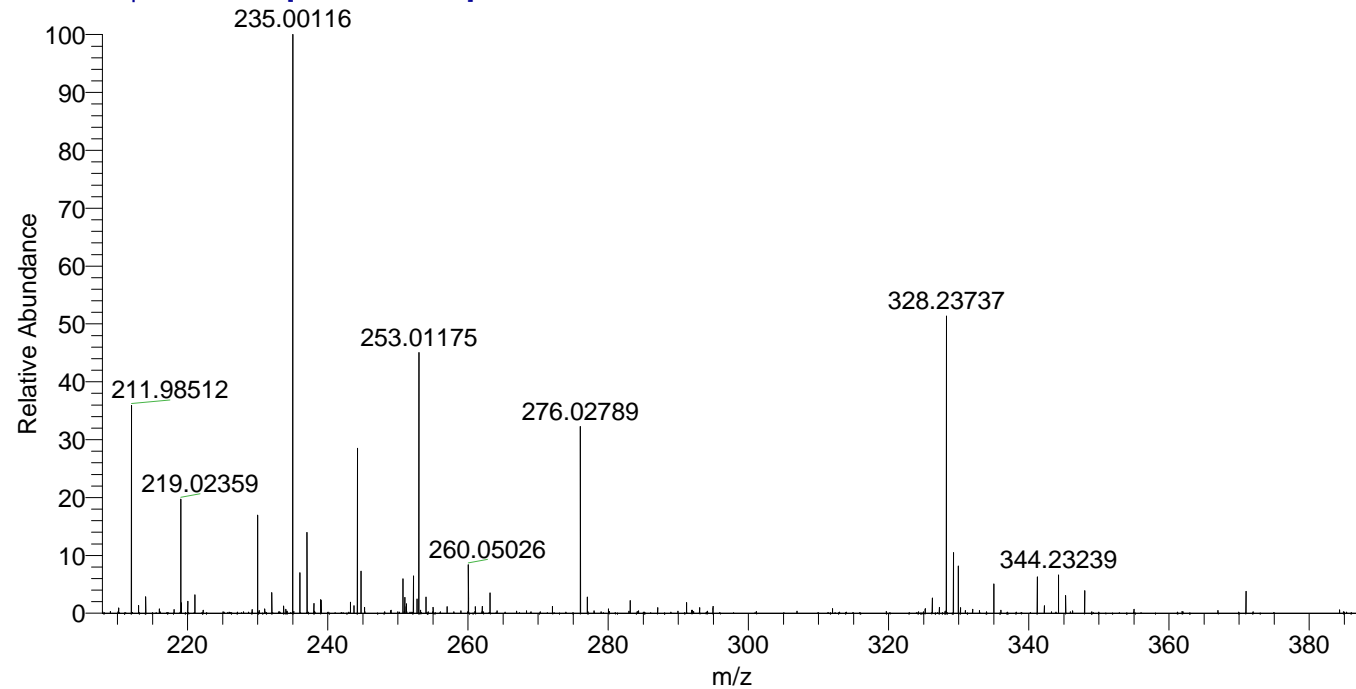
NL: 9.56E6
 Base Peak m/z=
 486.41751-486.42237 F:
 FTMS + p ESI Full ms
 [100.00-1500.00] MS
 Egrestis_HDX

NL: 2.66E6
 Base Peak m/z=
 244.21580-244.21824 F:
 FTMS + p ESI Full ms
 [100.00-1500.00] MS
 Egrestis_HDX

Egrestis_HDX#911 RT: 5.69
 T: FTMS + p ESI Full ms [100.00-1500.00]
 m/z= 486.00000-487.00000

m/z	Intensity	Relative	Delta (ppm)	Composition
486.42157	9556683.0	100.00	1.29	C ₂₄ H ₃₄ ² H ₁₀ O ₂ N ₈
			-1.89	C ₂₄ H ₃₆ ² H ₉ O ₂ N ₈
			4.47	C ₂₄ H ₃₂ ² H ₁₁ O ₂ N ₈

Egrestis_HDX #911 RT: 5.69 AV: 1 NL: 9.13E6
 T: FTMS + p ESI Full ms [100.00-1500.00]



Egrestis_HDX #911 RT: 5.69 AV: 1 NL: 8.99E6
 T: FTMS + p ESI Full ms [100.00-1500.00]

