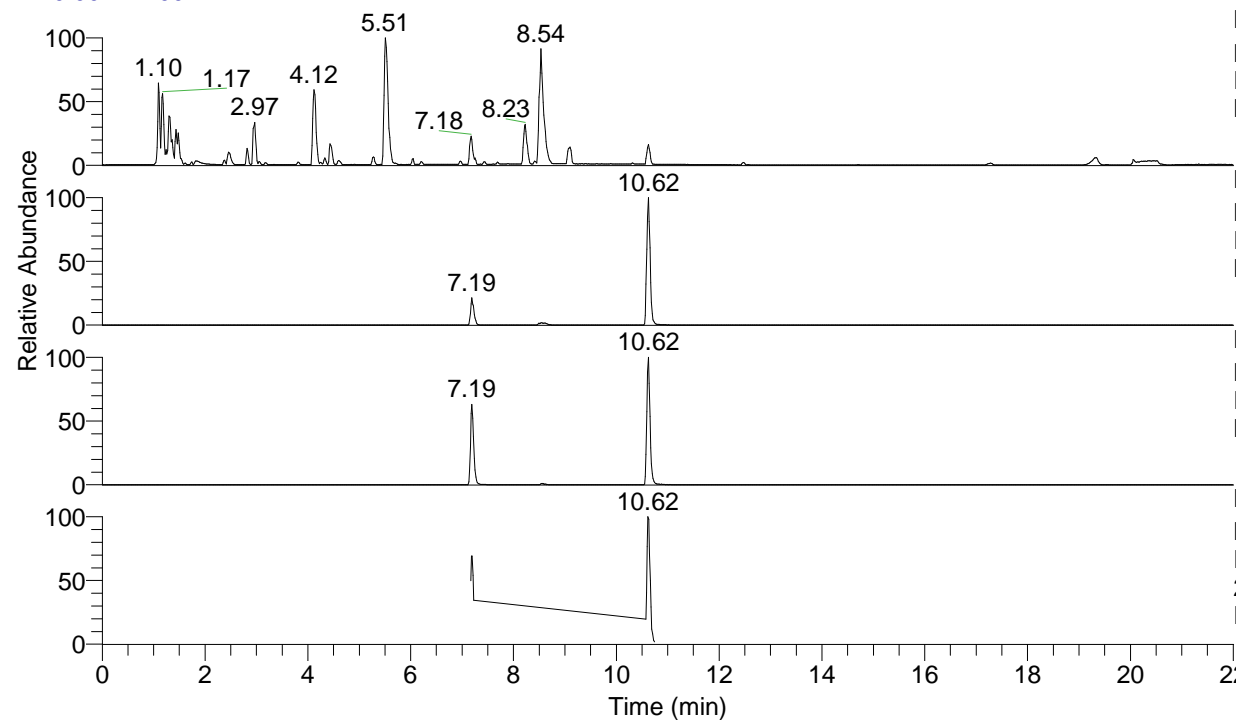


RT: 0.00 - 22.00



NL: 8.71E7  
 Base Peak m/z= 100.00000-1500.00000 F:  
 FTMS + p ESI Full ms [100.00-1500.00]  
 MS Eagrestis

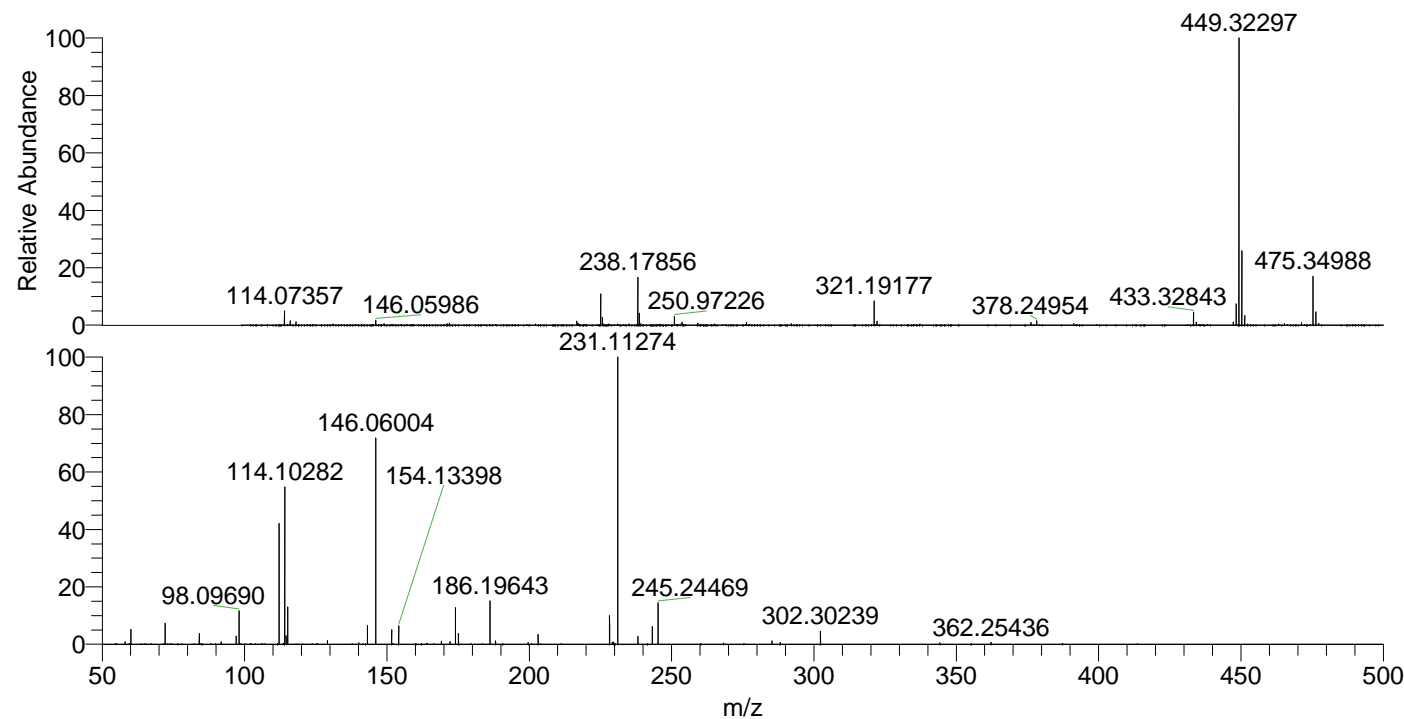
NL: 1.43E7  
 Base Peak m/z= 475.34615-475.35565 F:  
 FTMS + p ESI Full ms [100.00-1500.00]  
 MS Eagrestis

NL: 4.61E6  
 Base Peak m/z= 238.17698-238.18174 F:  
 FTMS + p ESI Full ms [100.00-1500.00]  
 MS Eagrestis

NL: 6.43E5  
 Base Peak m/z= 50.00000-1500.00000 F:  
 FTMS + p ESI d Full ms2  
 238.18@hcd35.00 [50.00-505.00] MS  
 Eagrestis

Eagrestis#2878-2901 RT: 7.17-7.23 AV:  
 F: FTMS + p ESI d Full ms2 238.18 ...  
 m/z= 50.00000-1000.00000

m/z	Intensity	Relative
58.06596	2841.2	0.82
60.05642	17894.9	5.16
72.08157	25375.7	7.32
84.08138	12950.4	3.74
91.75810	2781.3	0.80
97.07656	9911.2	2.86
98.09690	41214.8	11.89
112.11241	146519.7	42.28
114.10282	190121.3	54.86
114.61297	10225.7	2.95
115.12324	45313.1	13.07
129.13861	4623.9	1.33
140.11856	1908.0	0.55
143.14170	22997.2	6.64
146.06004	254044.0	73.30
151.65496	17786.1	5.13
154.13398	22217.3	6.41
169.17003	3779.6	1.09
172.18082	3323.7	0.96
174.05482	44248.2	12.77
175.08712	13253.6	3.82
186.19643	52288.6	15.09
188.18704	3982.3	1.15
199.64926	2243.0	0.65
203.08154	11960.5	3.45
228.21832	35229.5	10.16
229.17349	2673.6	0.77
229.66663	2483.5	0.72
231.11274	346580.4	100.00
238.17911	9548.6	2.76
243.25405	21406.9	6.18
245.24469	50339.6	14.52
285.27608	4020.2	1.16
288.17094	2118.4	0.61
302.30239	15936.4	4.60
362.25436	2056.3	0.59



NL: 1.72E7  
 Eagrestis#2887 RT: 7.19  
 AV: 1 T: FTMS + p ESI  
 Full ms [100.00-1500.00]

NL: 3.46E5  
 Eagrestis#2876-2903 RT:  
 7.17-7.23 AV: 5 F: FTMS  
 + p ESI d Full ms2  
 238.18@hcd35.00  
 [50.00-505.00]