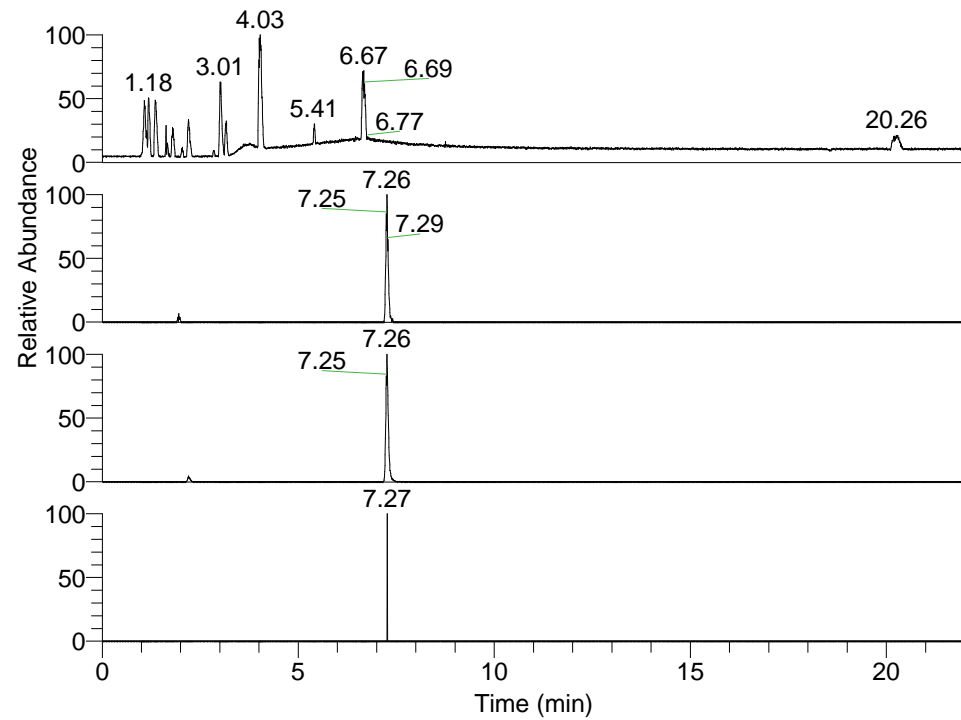


RT: 0.00 - 22.01



NL: 1.58E8
Base Peak m/z=
100.00000-1500.00000 F: FTMS + p
ESI Full ms [100.00-1500.00] MS
Eagrestis_HDX

NL: 4.77E5
Base Peak m/z=
478.42578-478.43056 F: FTMS + p
ESI Full ms [100.00-1500.00] MS
Eagrestis_HDX

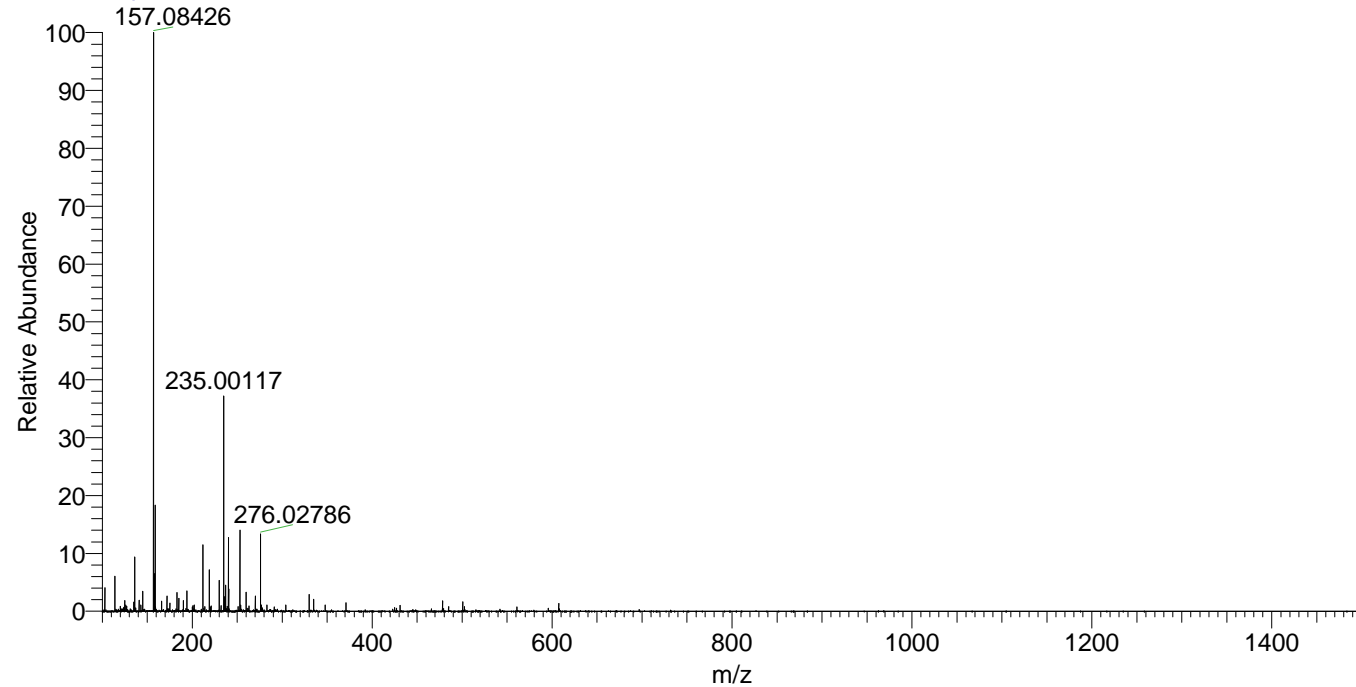
NL: 3.58E6
Base Peak m/z=
240.21994-240.22234 F: FTMS + p
ESI Full ms [100.00-1500.00] MS
Eagrestis_HDX

NL: 4.27E3
Base Peak m/z=
593.42434-593.43028 F: FTMS + p
ESI Full ms [100.00-1500.00] MS
Eagrestis_HDX

Eagrestis_HDX#1173 RT: 7.26
T: FTMS + p ESI Full ms [100.00-1500.00]
m/z= 478.00000-479.00000

m/z	Intensity	Relative	Delta (ppm)	Composition
478.42990	477087.4	100.00	1.53	C ₂₇ H ₄₆ ² H ₄ ON ₆
			-1.71	C ₂₇ H ₄₈ ² H ₃ ON ₆
			4.77	C ₂₇ H ₄₄ ² H ₅ ON ₆
			-4.94	C ₂₇ H ₅₀ ² H ₂ ON ₆

Eagrestis_HDX #1173 RT: 7.26 AV: 1 NL: 2.67E7
T: FTMS + p ESI Full ms [100.00-1500.00]



Eagrestis_HDX #1173 RT: 7.26 AV: 1 NL: 4.73E5
T: FTMS + p ESI Full ms [100.00-1500.00]

