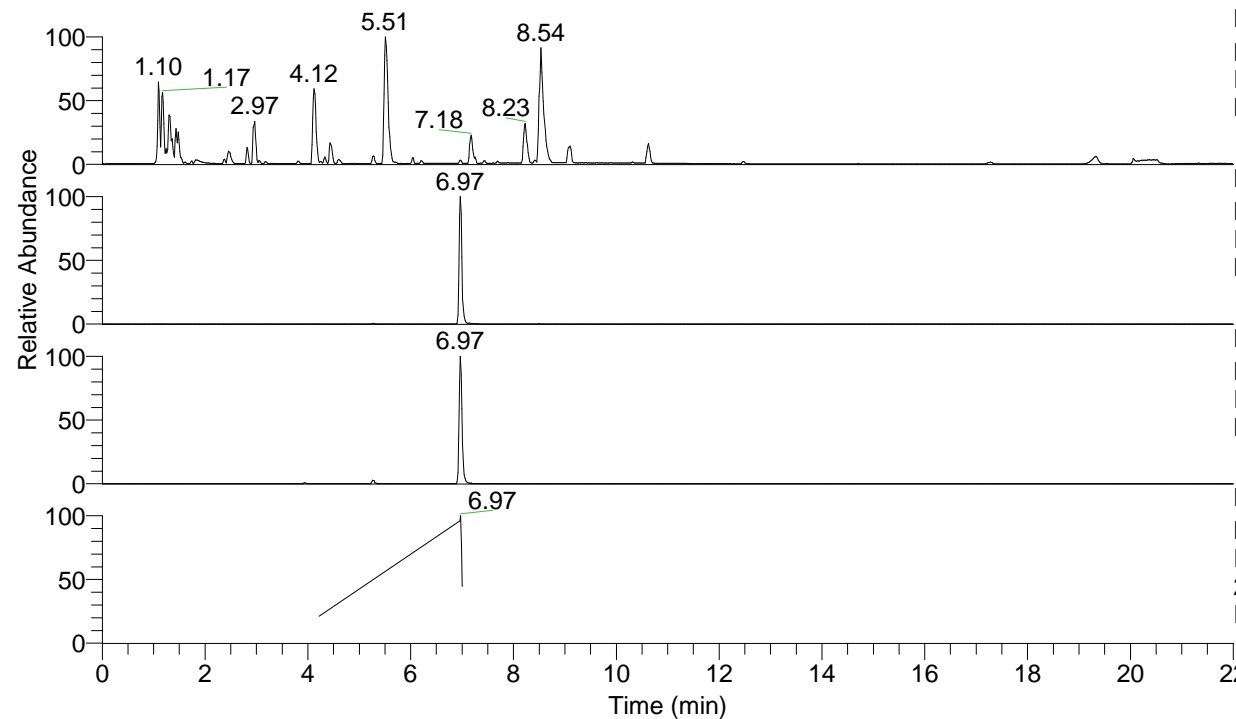


RT: 0.00 - 22.00



NL: 8.71E7
 Base Peak m/z= 100.00000-1500.00000 F:
 FTMS + p ESI Full ms [100.00-1500.00]
 MS Eagrestis

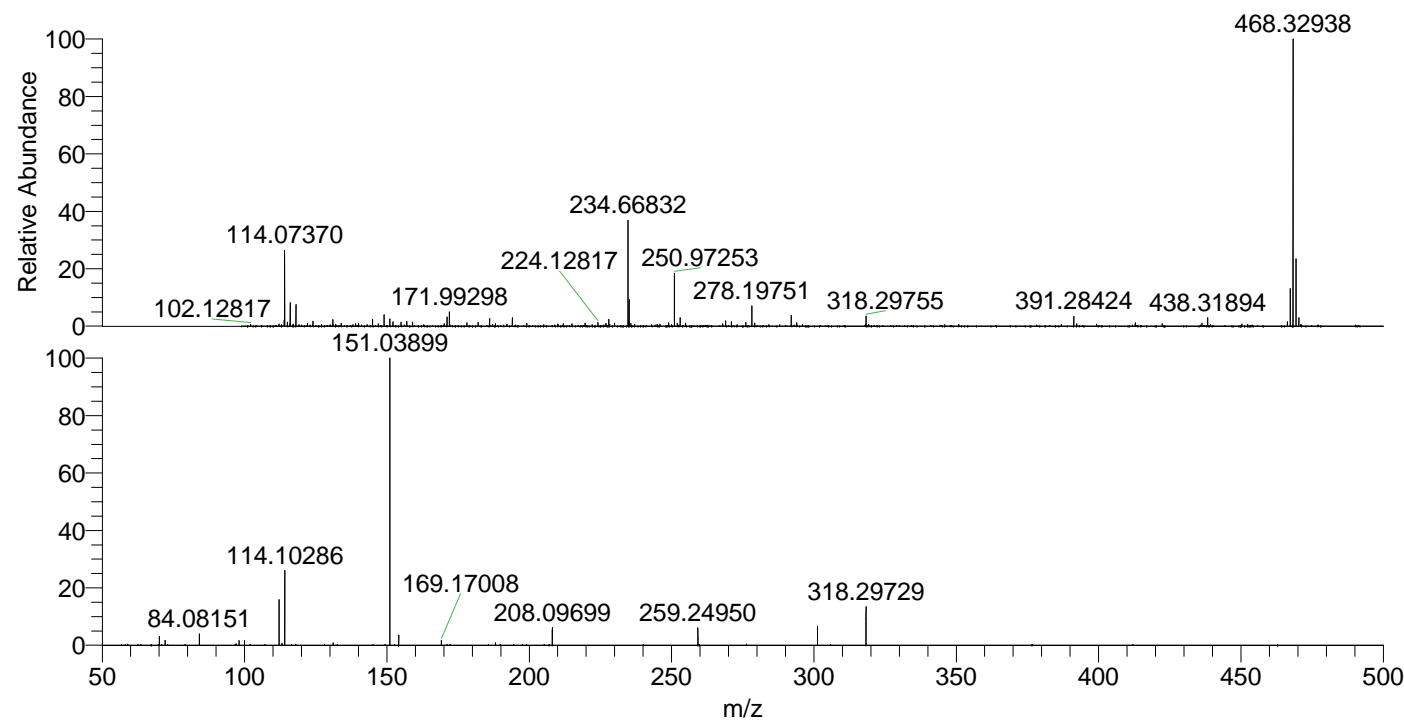
NL: 2.98E6
 Base Peak m/z= 468.32515-468.33451 F:
 FTMS + p ESI Full ms [100.00-1500.00]
 MS Eagrestis

NL: 1.10E6
 Base Peak m/z= 234.66648-234.67118 F:
 FTMS + p ESI Full ms [100.00-1500.00]
 MS Eagrestis

NL: 3.53E5
 Base Peak m/z= 50.00000-1500.00000 F:
 FTMS + p ESI d Full ms2
 234.67@hcd35.00 [50.00-495.00] MS
 Eagrestis

Eagrestis#2794-2811 RT: 6.96-7.00 AV:
 F: FTMS + p ESI d Full ms2 234.67 ...
 m/z= 50.00000-1000.00000

m/z	Intensity	Relative
70.06590	8414.2	3.21
72.08150	4469.3	1.70
84.08151	10731.5	4.09
97.07681	1479.6	0.56
98.09692	4104.4	1.56
99.98745	4396.9	1.68
112.11241	41393.3	15.78
113.10768	1801.4	0.69
114.10286	69282.9	26.41
131.11841	2292.1	0.87
151.03899	262384.3	100.00
154.13398	9321.9	3.55
169.17008	4617.6	1.76
188.17591	2156.6	0.82
208.09699	16234.7	6.19
259.24950	16193.9	6.17
301.27075	17350.7	6.61
318.29729	35695.9	13.60



NL: 2.91E6
 Eagrestis#2797 RT: 6.97
 AV: 1 T: FTMS + p ESI
 Full ms [100.00-1500.00]

NL: 2.61E5
 Eagrestis#2791-2812 RT:
 6.96-7.00 AV: 4 F: FTMS
 + p ESI d Full ms2
 234.67@hcd35.00
 [50.00-495.00]