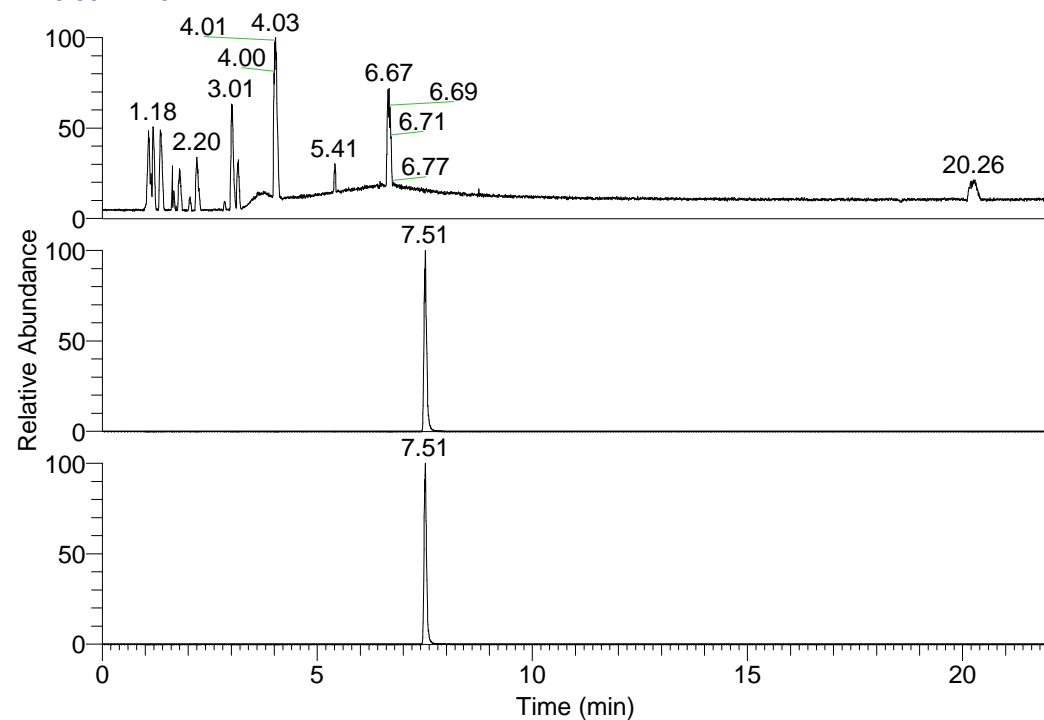


RT: 0.00 - 22.01



NL: 1.58E8
 Base Peak m/z=
 100.00000-1500.00000 F:
 FTMS + p ESI Full ms
 [100.00-1500.00] MS
 Egrestis_HDX

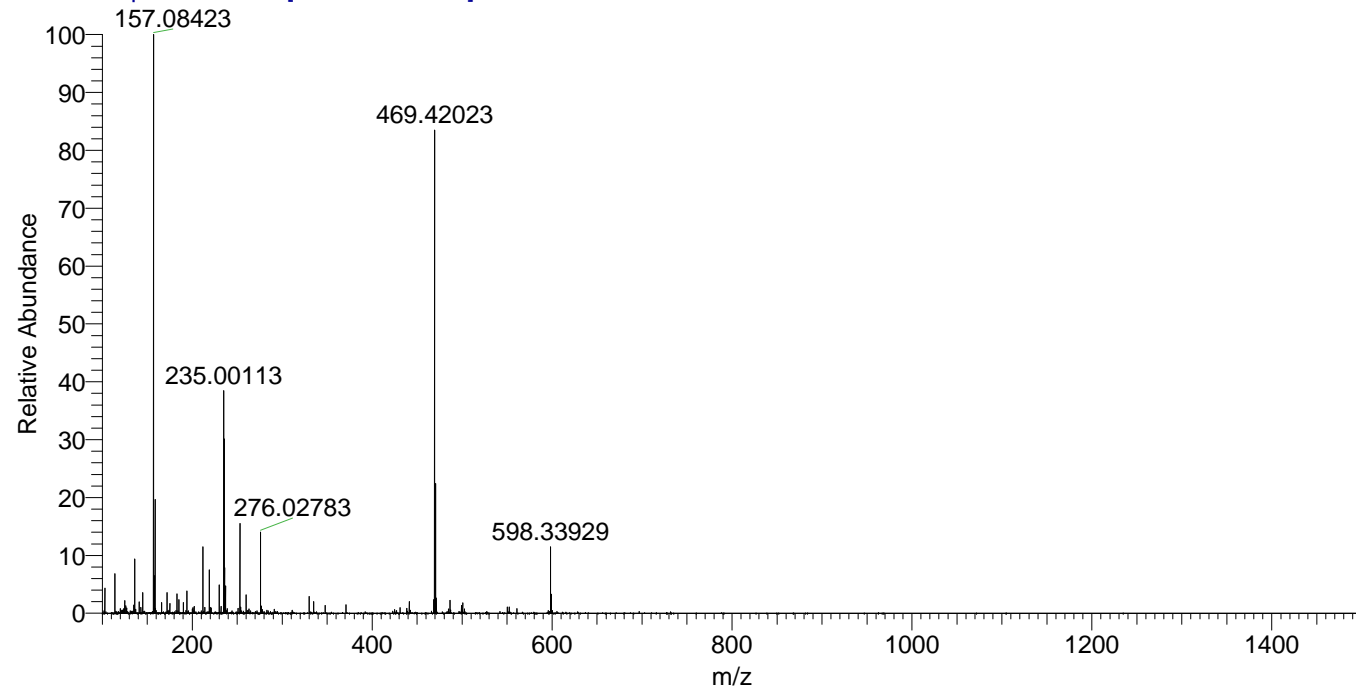
Egrestis_HDX#1214 RT: 7.51
 T: FTMS + p ESI Full ms [100.00-1500.00]
 m/z= 469.00000-470.00000

m/z	Intensity	Relative	Delta (ppm)	Composition
469.42023	19757864.0	100.00	1.02	C ₂₄ H ₃₅ ² H ₉ ON ₈
			-2.28	C ₂₄ H ₃₇ ² H ₈ ON ₈
			4.31	C ₂₄ H ₃₃ ² H ₁₀ ON ₈

NL: 2.20E7
 Base Peak m/z=
 469.41640-469.42110 F:
 FTMS + p ESI Full ms
 [100.00-1500.00] MS
 Egrestis_HDX

NL: 7.61E6
 Base Peak m/z=
 235.71525-235.71761 F:
 FTMS + p ESI Full ms
 [100.00-1500.00] MS
 Egrestis_HDX

Egrestis_HDX #1214 RT: 7.51 AV: 1 NL: 2.36E7
 T: FTMS + p ESI Full ms [100.00-1500.00]



Egrestis_HDX #1214 RT: 7.51 AV: 1 NL: 1.97E7
 T: FTMS + p ESI Full ms [100.00-1500.00]

