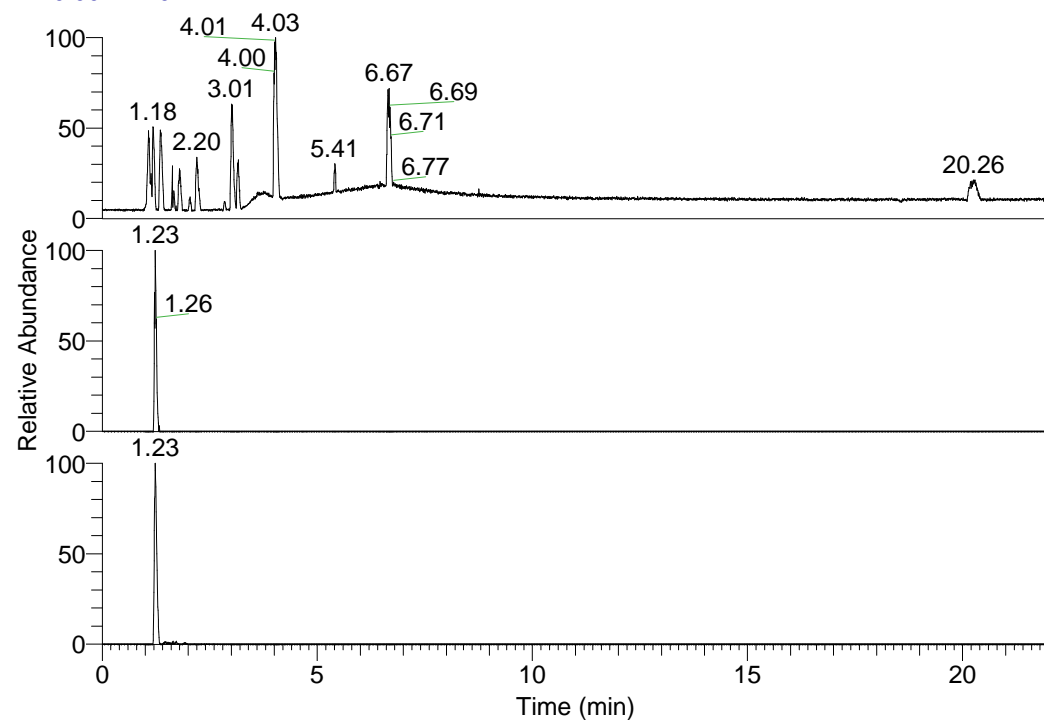


RT: 0.00 - 22.01



NL: 1.58E8
 Base Peak m/z=
 100.00000-1500.00000 F:
 FTMS + p ESI Full ms
 [100.00-1500.00] MS
 Egrestis_HDX

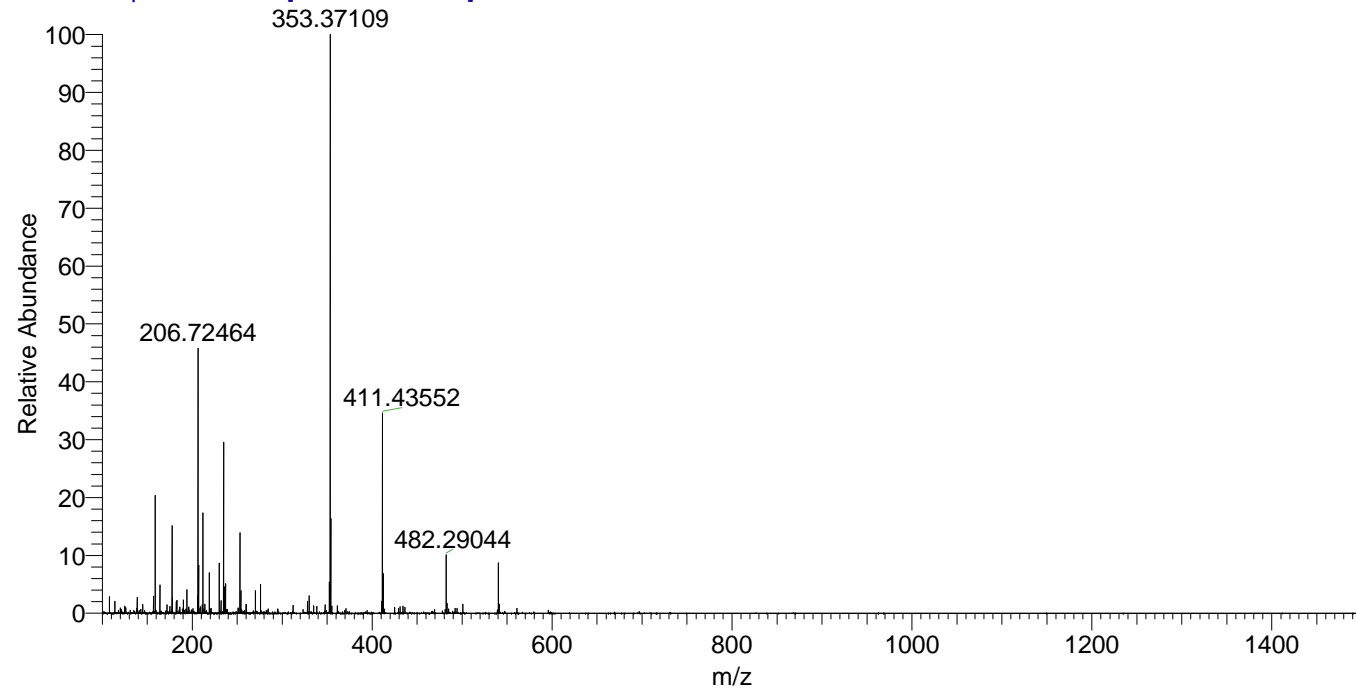
NL: 1.78E5
 Base Peak m/z=
 469.49618-469.50088 F:
 FTMS + p ESI Full ms
 [100.00-1500.00] MS
 Egrestis_HDX

NL: 1.33E6
 Base Peak m/z=
 235.75514-235.75750 F:
 FTMS + p ESI Full ms
 [100.00-1500.00] MS
 Egrestis_HDX

Egrestis_HDX#189 RT: 1.23
 T: FTMS + p ESI Full ms [100.00-1500.00]
 m/z= 469.00000-470.00000

m/z	Intensity	Relative	Delta (ppm)	Composition
469.50018	162496.2	100.00	1.40	C ₂₂ H ₄₃ ² H ₁₀ ON ₉
			-1.90	C ₂₂ H ₄₅ ² H ₉ ON ₉
			4.70	C ₂₂ H ₄₁ ² H ₁₁ ON ₉

Egrestis_HDX #189 RT: 1.23 AV: 1 NL: 2.65E7
 T: FTMS + p ESI Full ms [100.00-1500.00]



Egrestis_HDX #189 RT: 1.23 AV: 1 NL: 1.62E5
 T: FTMS + p ESI Full ms [100.00-1500.00]

