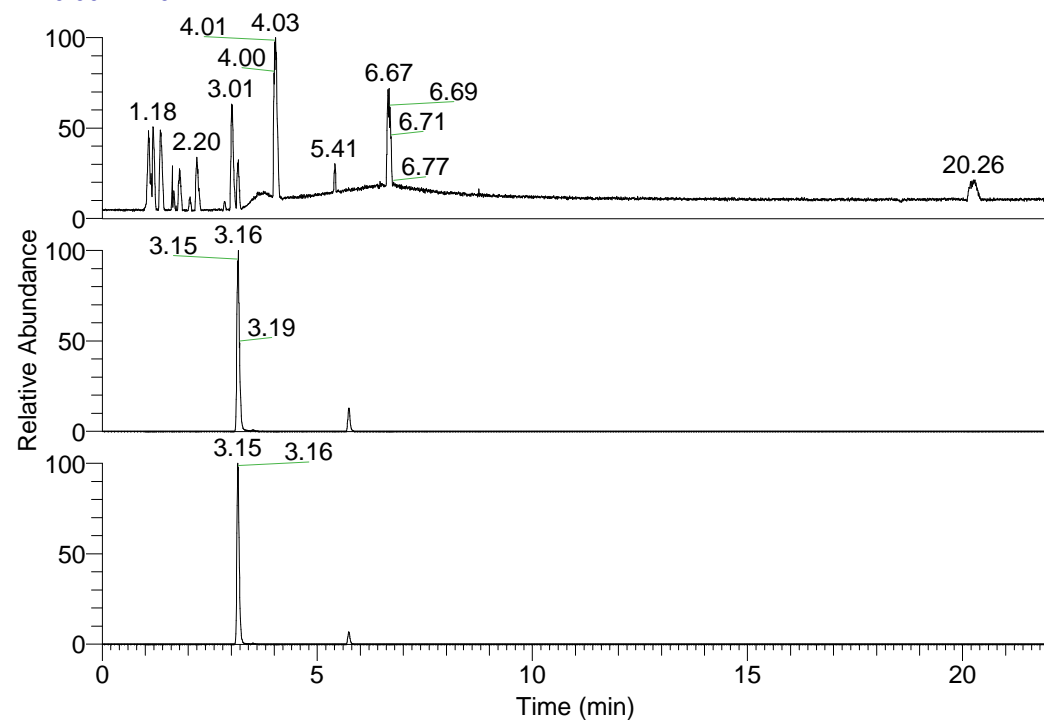


RT: 0.00 - 22.01



NL: 1.58E8
 Base Peak m/z=
 100.00000-1500.00000 F:
 FTMS + p ESI Full ms
 [100.00-1500.00] MS
 Egrestis_HDX

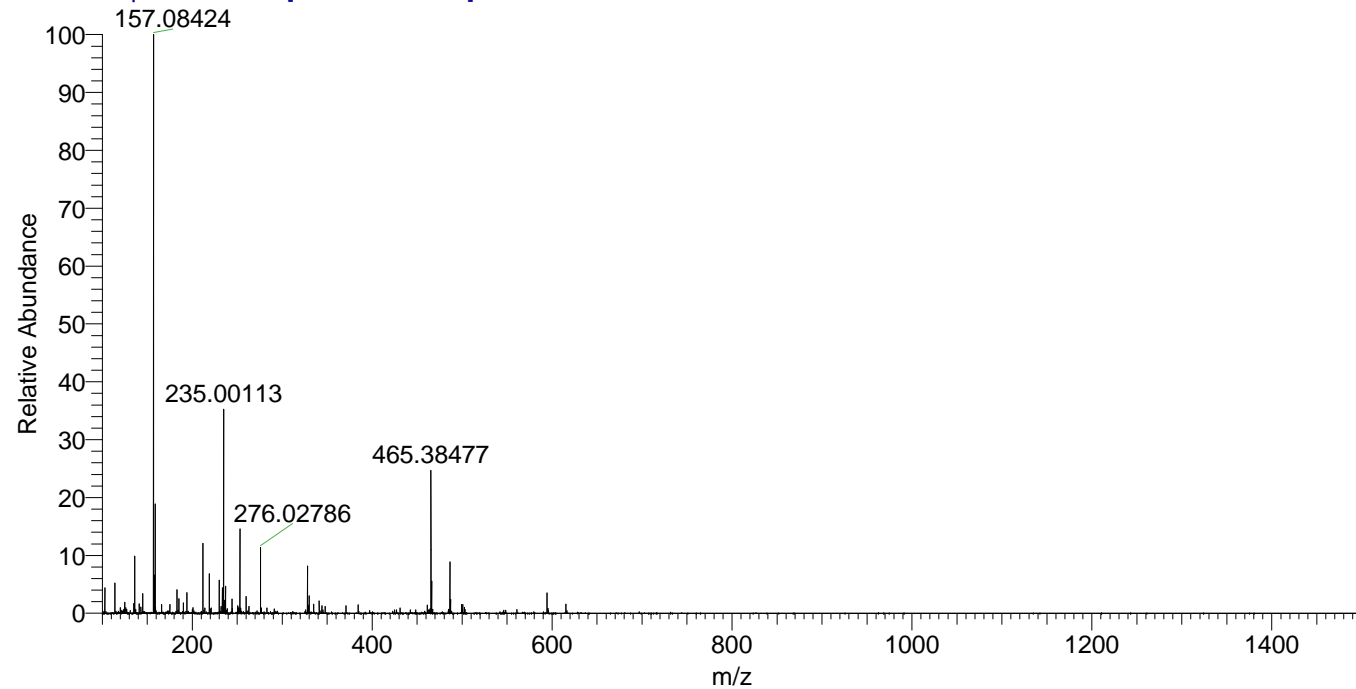
NL: 5.14E7
 Base Peak m/z=
 465.38089-465.38555 F:
 FTMS + p ESI Full ms
 [100.00-1500.00] MS
 Egrestis_HDX

NL: 1.63E7
 Base Peak m/z=
 233.69749-233.69983 F:
 FTMS + p ESI Full ms
 [100.00-1500.00] MS
 Egrestis_HDX

Egrestis_HDX#918 RT: 5.73
 T: FTMS + p ESI Full ms [100.00-1500.00]
 m/z= 465.00000-466.00000

m/z	Intensity	Relative	Delta (ppm)	Composition
465.38477	6068479.5	100.00	1.17	C ₂₁ H ₃₁ ² H ₁₀ O ₄ N ₇
			-2.16	C ₂₁ H ₃₃ ² H ₉ O ₄ N ₇
			4.50	C ₂₁ H ₂₉ ² H ₁₁ O ₄ N ₇

Egrestis_HDX #918 RT: 5.73 AV: 1 NL: 2.46E7
 T: FTMS + p ESI Full ms [100.00-1500.00]



Egrestis_HDX #918 RT: 5.73 AV: 1 NL: 6.06E6
 T: FTMS + p ESI Full ms [100.00-1500.00]

