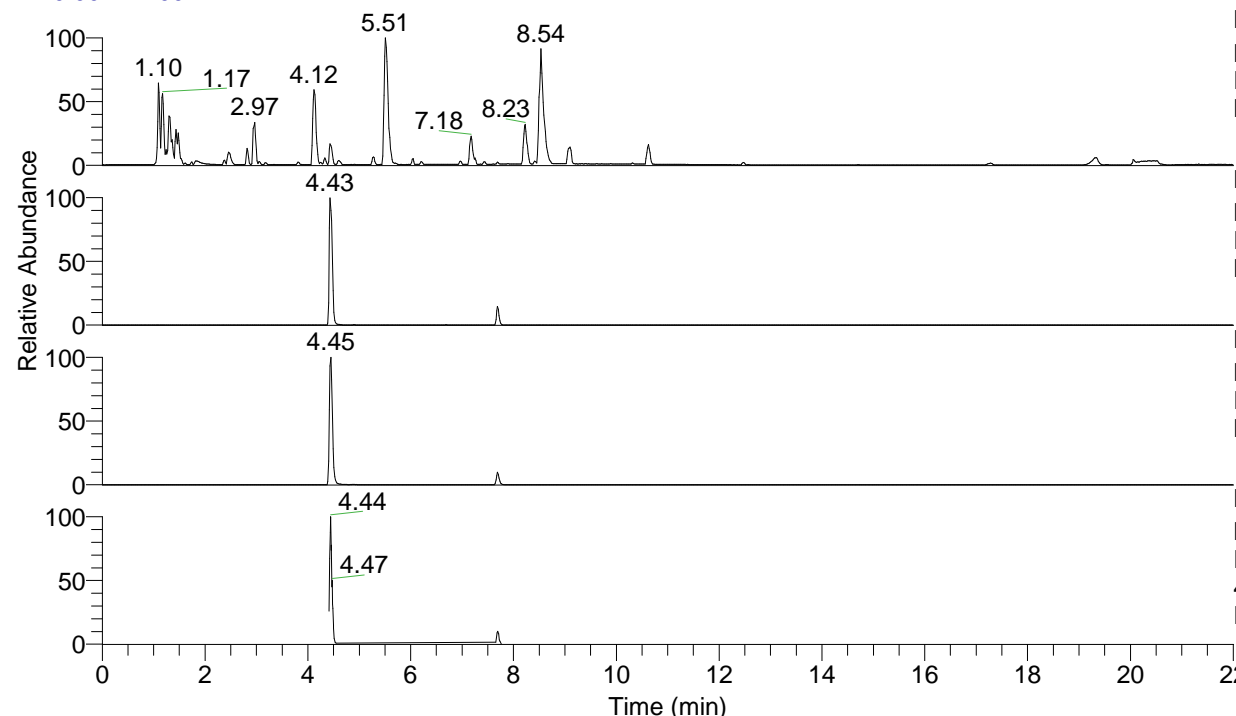


RT: 0.00 - 22.00



NL: 8.71E7  
 Base Peak m/z= 100.00000-1500.00000 F:  
 FTMS + p ESI Full ms [100.00-1500.00]  
 MS Eagrestis

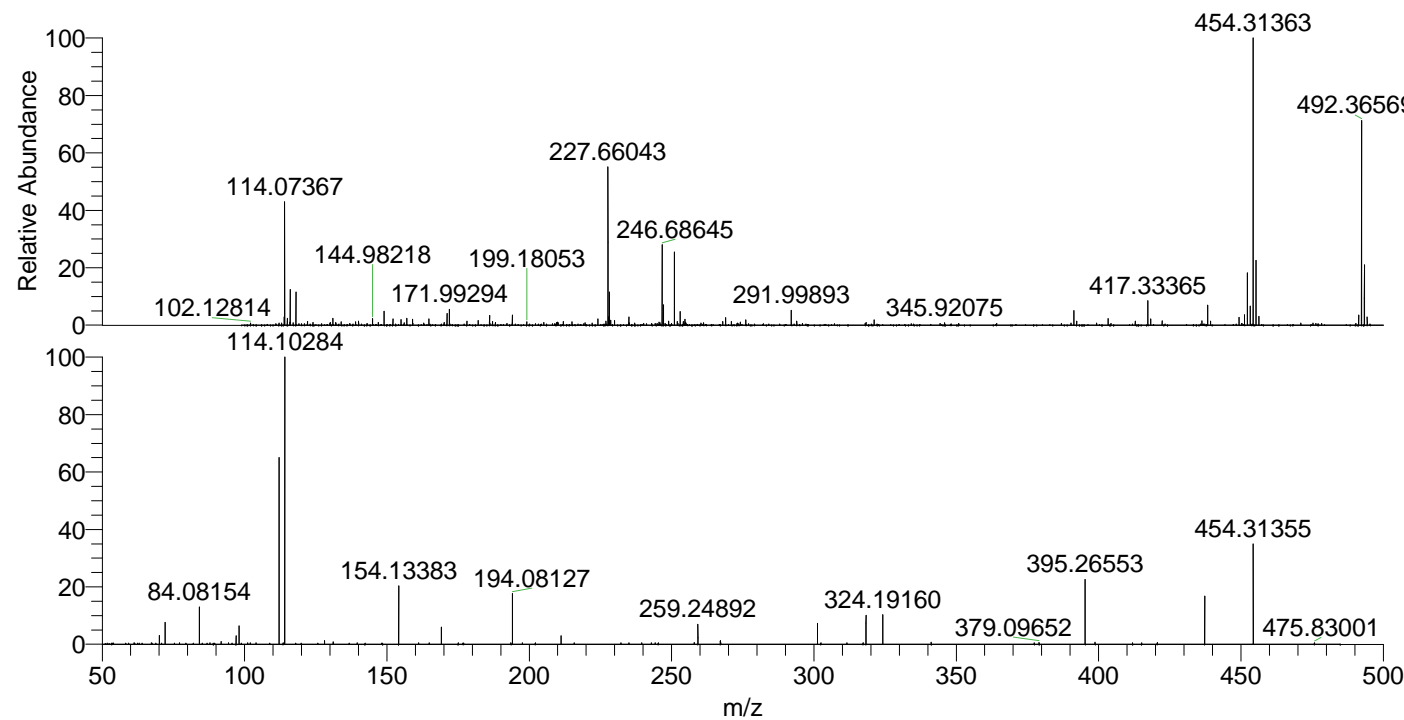
NL: 1.49E7  
 Base Peak m/z= 454.30964-454.31872 F:  
 FTMS + p ESI Full ms [100.00-1500.00]  
 MS Eagrestis

NL: 1.17E7  
 Base Peak m/z= 227.65872-227.66328 F:  
 FTMS + p ESI Full ms [100.00-1500.00]  
 MS Eagrestis

NL: 2.51E6  
 Base Peak m/z= 50.00000-1500.00000 F:  
 FTMS + p ESI d Full ms2  
 454.31@hcd35.00 [50.00-480.00] MS  
 Eagrestis

Eagrestis#3072-3098 RT: 7.66-7.72 AV:  
 F: FTMS + p ESI d Full ms2 454.31 ...  
 m/z= 50.00000-1000.00000

m/z	Intensity	Relative
70.06586	4536.6	3.09
72.08159	11164.7	7.60
77.15960	771.8	0.53
84.08154	19551.6	13.30
91.75842	1419.3	0.97
94.40180	746.3	0.51
97.07650	4236.3	2.88
98.09698	9314.6	6.34
101.07208	787.8	0.54
102.05438	755.0	0.51
112.11242	94858.2	64.55
113.53254	764.7	0.52
114.10284	146958.1	100.00
128.10735	1805.6	1.23
131.11809	1254.7	0.85
154.13383	29608.8	20.15
169.16998	8836.9	6.01
175.04879	754.8	0.51
194.08127	25784.1	17.55
211.19242	4263.0	2.90
215.78155	799.5	0.54
232.21417	791.2	0.54
235.05216	788.8	0.54
239.51856	785.7	0.53
257.98548	898.5	0.61
259.24892	10557.3	7.18
267.13357	1962.3	1.34
301.27099	10677.8	7.27
302.44792	787.3	0.54
311.58089	739.3	0.50
318.29684	14884.8	10.13
324.19160	15690.5	10.68
341.21647	993.8	0.68
377.41024	809.6	0.55
379.09652	852.7	0.58
395.26553	32833.5	22.34
398.75674	1037.7	0.71
411.93947	792.8	0.54
415.13724	761.4	0.52
420.62594	885.2	0.60
437.28700	24818.5	16.89
454.31355	50992.3	34.70
475.83001	739.9	0.50



NL: 2.08E6  
 Eagrestis#3085 RT: 7.69  
 AV: 1 T: FTMS + p ESI  
 Full ms [100.00-1500.00]

NL: 1.46E5  
 Eagrestis#3072-3102 RT:  
 7.66-7.72 AV: 6 F: FTMS  
 + p ESI d Full ms2  
 454.31@hcd35.00  
 [50.00-480.00]