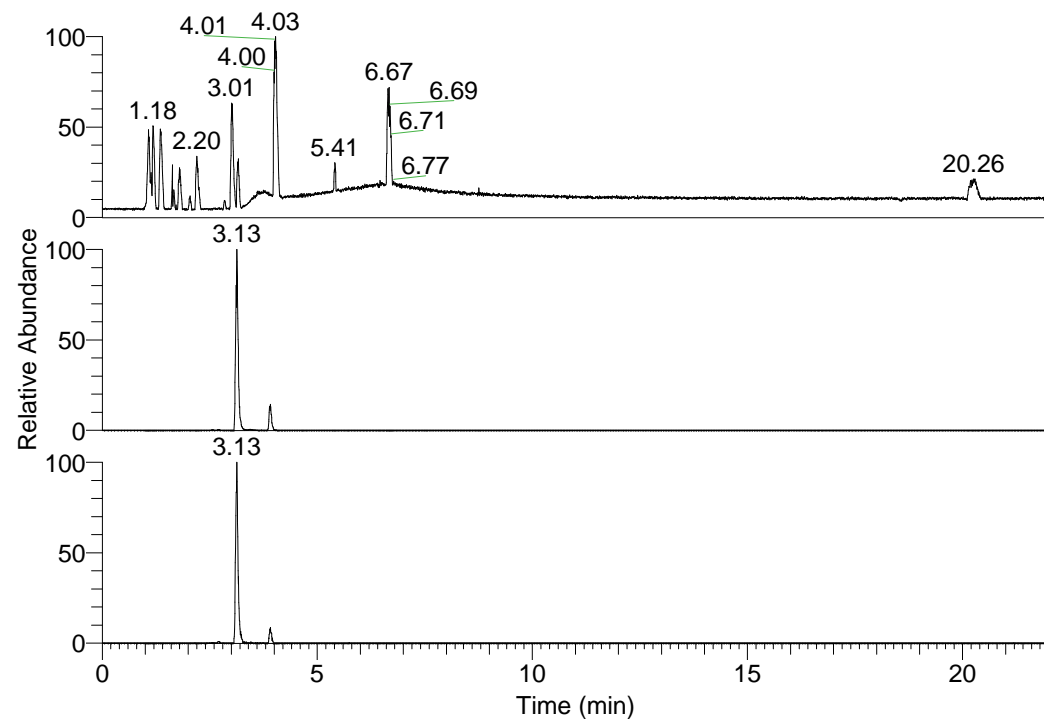


RT: 0.00 - 22.01



NL: 1.58E8  
 Base Peak m/z=  
 100.00000-1500.00000 F:  
 FTMS + p ESI Full ms  
 [100.00-1500.00] MS  
 Egrestis\_HDX

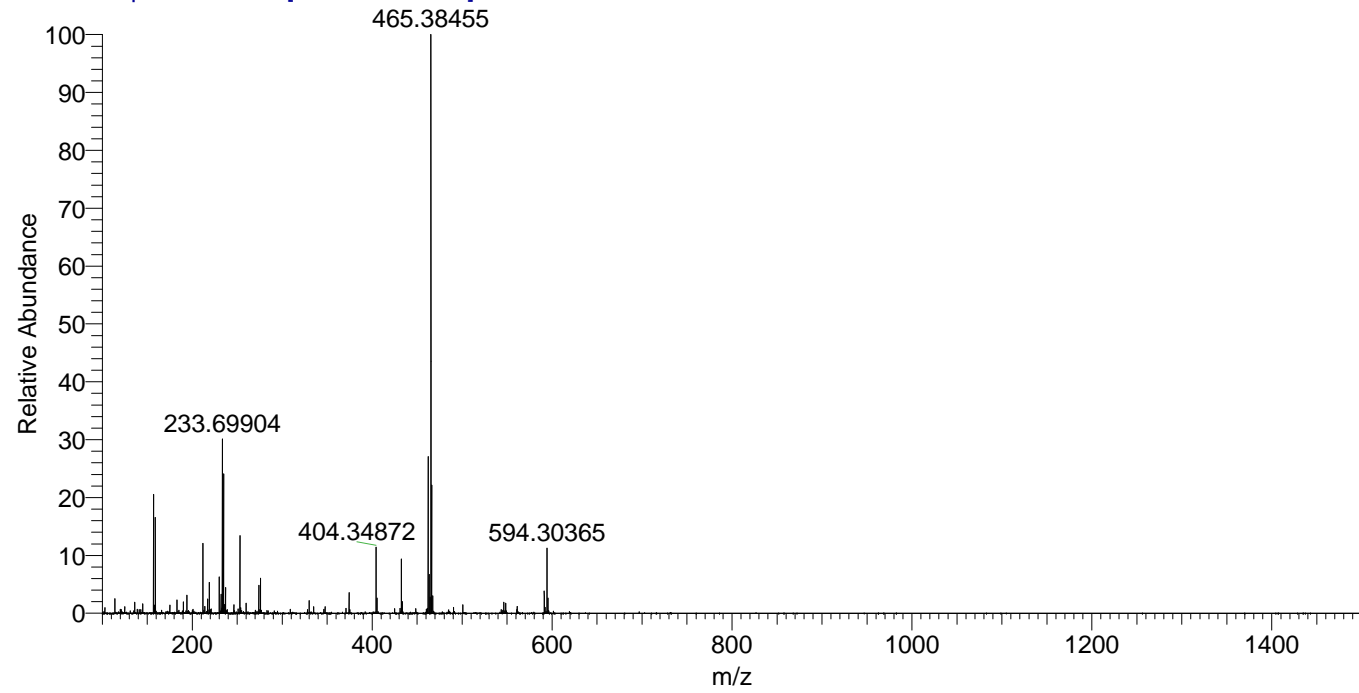
NL: 9.00E6  
 Base Peak m/z=  
 462.40950-462.41412 F:  
 FTMS + p ESI Full ms  
 [100.00-1500.00] MS  
 Egrestis\_HDX

NL: 1.10E6  
 Base Peak m/z=  
 232.21179-232.21411 F:  
 FTMS + p ESI Full ms  
 [100.00-1500.00] MS  
 Egrestis\_HDX

Egrestis\_HDX#493 RT: 3.13  
 T: FTMS + p ESI Full ms [100.00-1500.00]  
 m/z= 462.00000-463.00000

m/z	Intensity	Relative	Delta (ppm)	Composition
462.41318	8995360.0	100.00	0.81	C <sub>23</sub> H <sub>38</sub> <sup>2</sup> H <sub>8</sub> O <sub>3</sub> N <sub>6</sub>
			-2.54	C <sub>23</sub> H <sub>40</sub> <sup>2</sup> H <sub>7</sub> O <sub>3</sub> N <sub>6</sub>
			4.15	C <sub>23</sub> H <sub>36</sub> <sup>2</sup> H <sub>9</sub> O <sub>3</sub> N <sub>6</sub>

Egrestis\_HDX #493 RT: 3.13 AV: 1 NL: 3.32E7  
 T: FTMS + p ESI Full ms [100.00-1500.00]



Egrestis\_HDX #493 RT: 3.13 AV: 1 NL: 3.32E7  
 T: FTMS + p ESI Full ms [100.00-1500.00]

