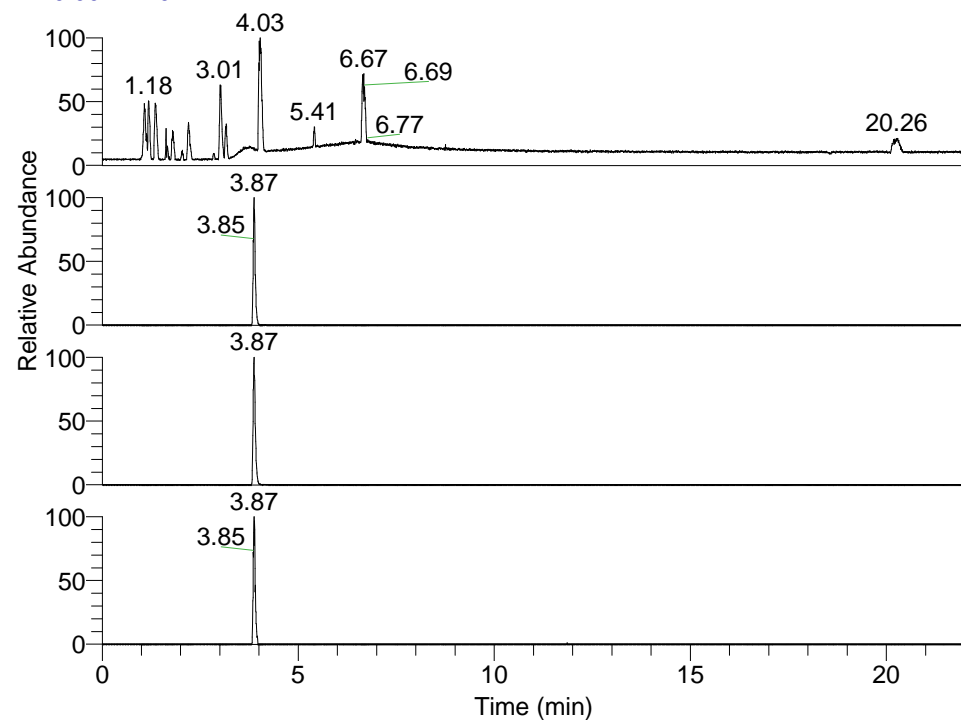


RT: 0.00 - 22.01



NL: 1.58E8
 Base Peak m/z=
 100.00000-1500.00000 F: FTMS + p
 ESI Full ms [100.00-1500.00] MS
 Eagrestis_HDX

NL: 6.96E6
 Base Peak m/z=
 457.38916-457.39374 F: FTMS + p
 ESI Full ms [100.00-1500.00] MS
 Eagrestis_HDX

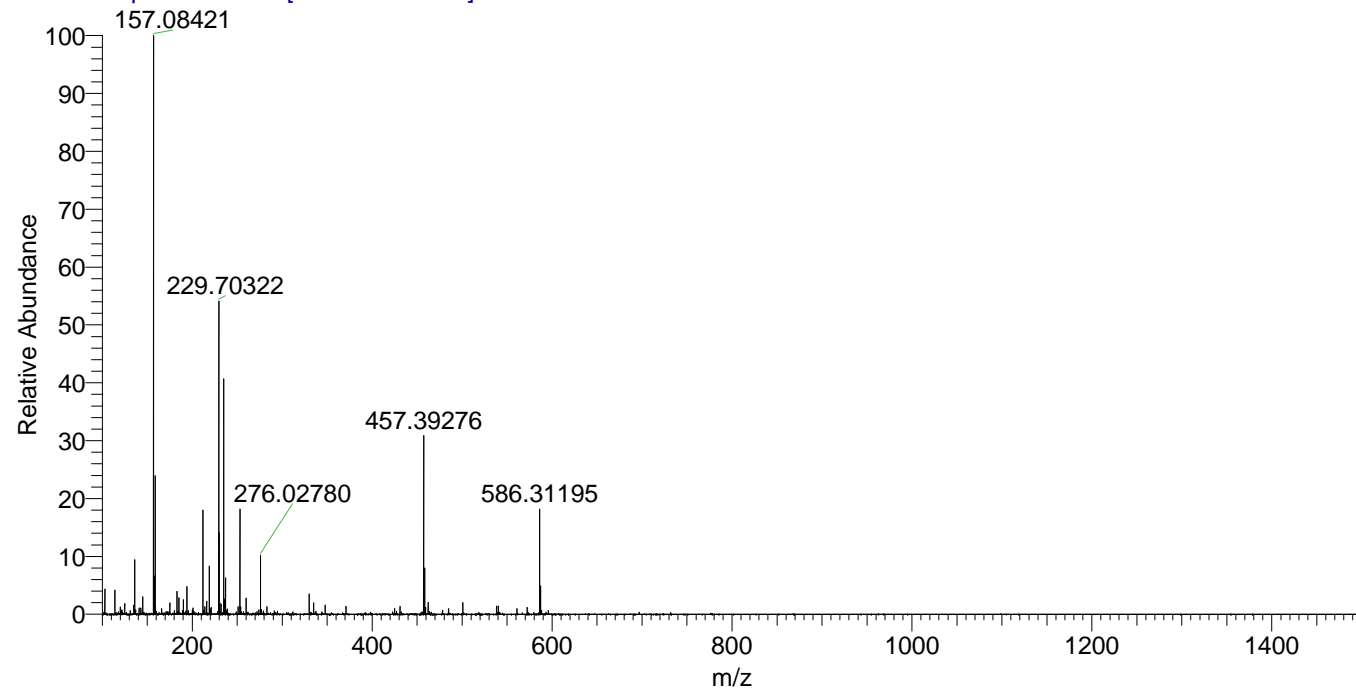
NL: 1.23E7
 Base Peak m/z=
 229.70163-229.70393 F: FTMS + p
 ESI Full ms [100.00-1500.00] MS
 Eagrestis_HDX

NL: 2.58E5
 Base Peak m/z=
 572.38773-572.39345 F: FTMS + p
 ESI Full ms [100.00-1500.00] MS
 Eagrestis_HDX

Eagrestis_HDX#613 RT: 3.87
 T: FTMS + p ESI Full ms [100.00-1500.00]
 m/z= 457.00000-458.00000

m/z	Intensity	Relative	Delta (ppm)	Composition
457.39276	6963927.0	100.00	0.68	C ₂₄ H ₄₃ ² H ₄ O ₃ N ₅
			-2.70	C ₂₄ H ₄₅ ² H ₃ O ₃ N ₅
			4.07	C ₂₄ H ₄₁ ² H ₅ O ₃ N ₅

Eagrestis_HDX #613 RT: 3.87 AV: 1 NL: 2.18E7
 T: FTMS + p ESI Full ms [100.00-1500.00]



Eagrestis_HDX #613 RT: 3.87 AV: 1 NL: 6.72E6
 T: FTMS + p ESI Full ms [100.00-1500.00]

