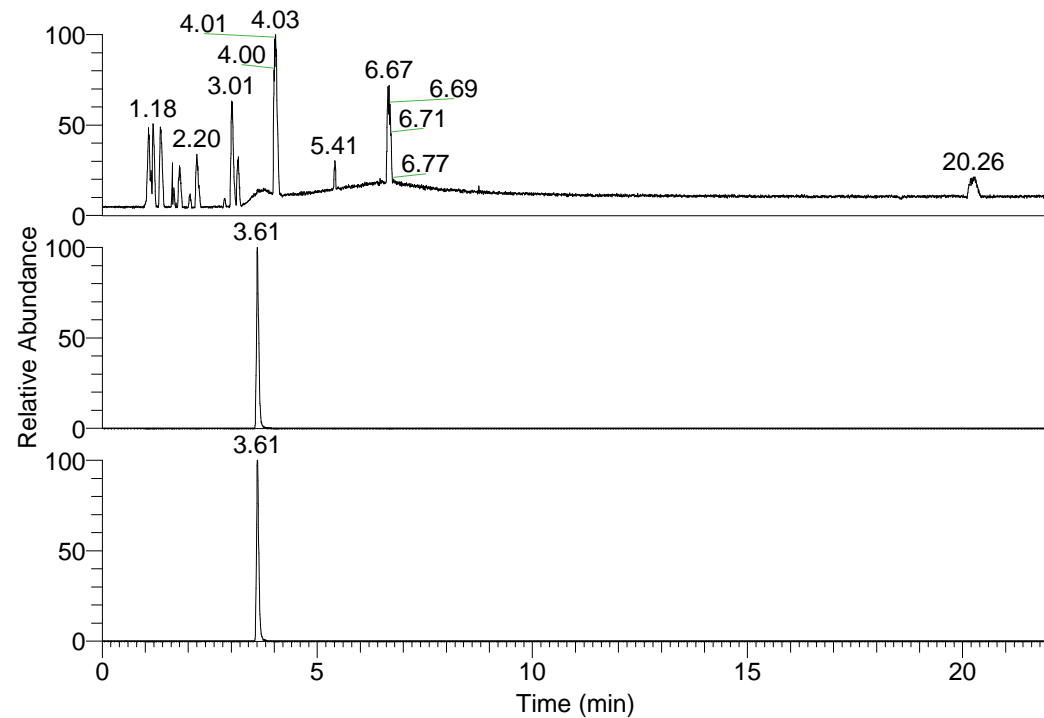


RT: 0.00 - 22.01



NL: 1.58E8
 Base Peak m/z=
 100.00000-1500.00000 F:
 FTMS + p ESI Full ms
 [100.00-1500.00] MS
 Eagrestis_HDX

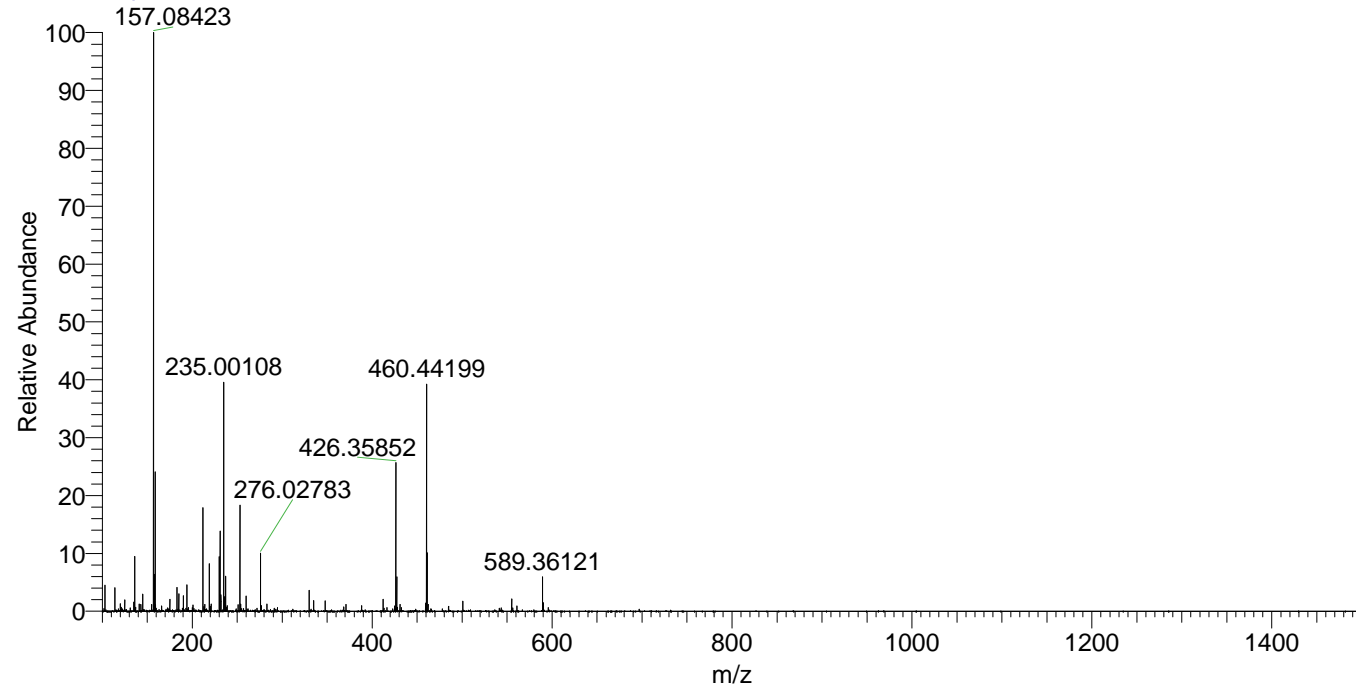
NL: 9.67E6
 Base Peak m/z=
 460.43838-460.44298 F:
 FTMS + p ESI Full ms
 [100.00-1500.00] MS
 Eagrestis_HDX

NL: 3.12E6
 Base Peak m/z=
 231.22623-231.22855 F:
 FTMS + p ESI Full ms
 [100.00-1500.00] MS
 Eagrestis_HDX

Eagrestis_HDX#571 RT: 3.61
 T: FTMS + p ESI Full ms [100.00-1500.00]
 m/z= 460.00000-461.00000

m/z	Intensity	Relative	Delta (ppm)	Composition
460.44199	9206766.0	100.00	0.67	C ₂₃ H ₃₆ ² H ₁₀ O ₈ N ₈
			-2.69	C ₂₃ H ₃₈ ² H ₉ O ₈ N ₈
			4.03	C ₂₃ H ₃₄ ² H ₁₁ O ₈ N ₈

Eagrestis_HDX #571 RT: 3.61 AV: 1 NL: 2.24E7
 T: FTMS + p ESI Full ms [100.00-1500.00]



Eagrestis_HDX #571 RT: 3.61 AV: 1 NL: 8.78E6
 T: FTMS + p ESI Full ms [100.00-1500.00]

