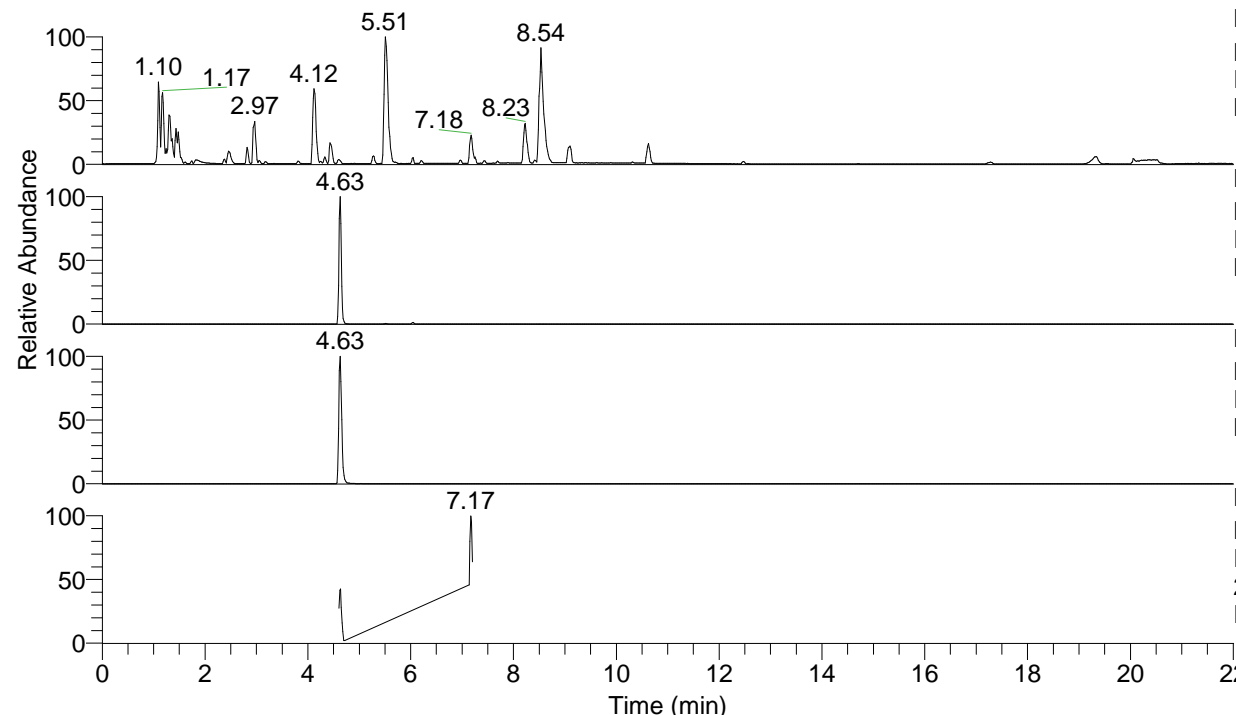


RT: 0.00 - 22.00



NL: 8.71E7
 Base Peak m/z= 100.00000-1500.00000 F:
 FTMS + p ESI Full ms [100.00-1500.00]
 MS Eagrestis

NL: 2.52E6
 Base Peak m/z= 449.36714-449.37612 F:
 FTMS + p ESI Full ms [100.00-1500.00]
 MS Eagrestis

NL: 1.97E6
 Base Peak m/z= 225.18748-225.19198 F:
 FTMS + p ESI Full ms [100.00-1500.00]
 MS Eagrestis

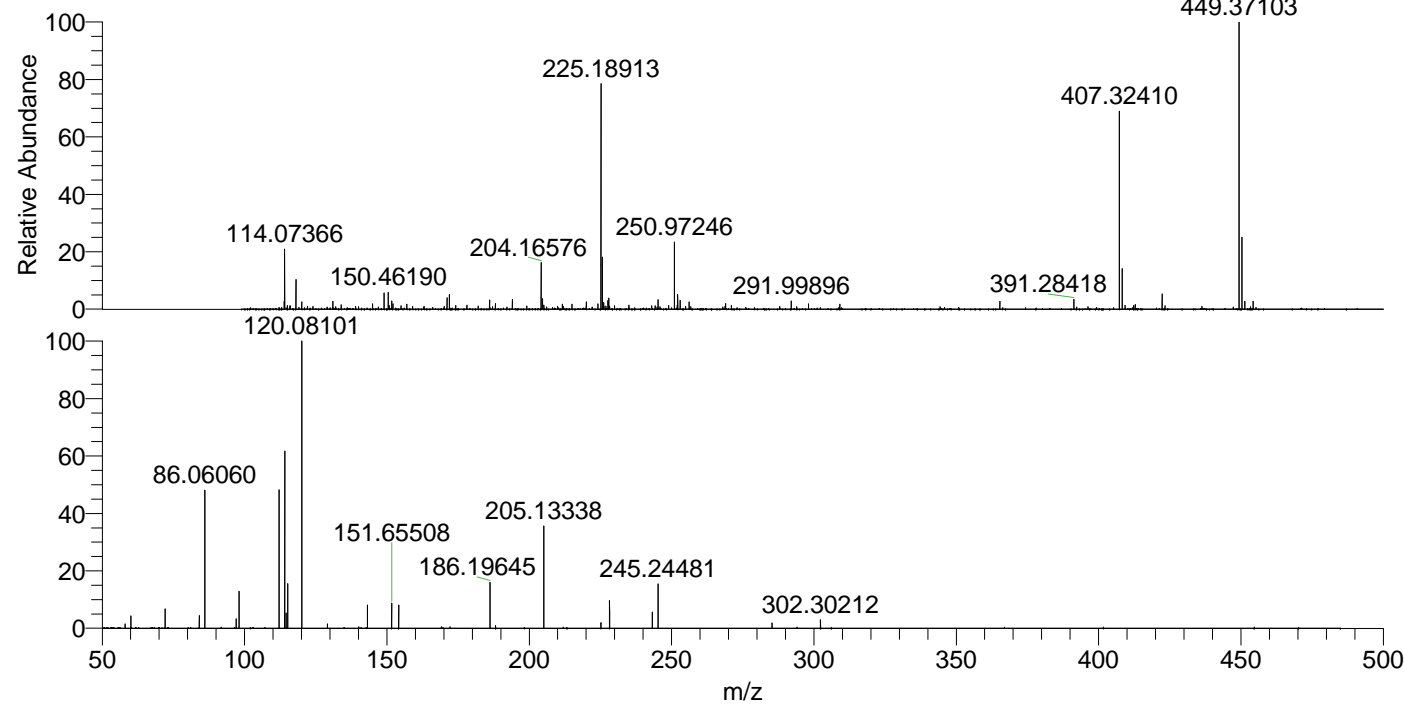
NL: 6.48E5
 Base Peak m/z= 50.00000-1500.00000 F:
 FTMS + p ESI d Full ms2
 225.17@hcd35.00 [50.00-480.00] MS
 Eagrestis

Eagrestis#1852-1880 RT: 4.61-4.68 AV:

F: FTMS + p ESI d Full ms2 225.17 ...

m/z= 50.00000-1000.00000

m/z	Intensity	Relative
58.06592	2546.8	1.51
60.05640	7141.5	4.25
72.08152	11274.1	6.71
84.08137	7393.6	4.40
86.06060	82198.6	48.89
97.07621	5654.6	3.36
98.09685	22111.6	13.15
112.11239	80594.5	47.94
114.07935	3584.9	2.13
114.10280	102541.6	60.99
114.61299	8869.5	5.28
115.12329	26047.1	15.49
120.08101	168128.3	100.00
129.13895	2456.5	1.46
143.14173	13774.8	8.19
151.65508	14731.7	8.76
154.13384	13350.6	7.94
186.19645	26472.9	15.75
188.18683	1609.2	0.96
205.13338	59273.6	35.25
225.18989	3183.0	1.89
228.21806	16138.2	9.60
243.25455	9575.5	5.70
245.24481	25716.8	15.30
285.27576	3064.8	1.82
302.30212	4988.6	2.97



NL: 2.48E6
 Eagrestis#1861 RT: 4.63
 AV: 1 T: FTMS + p ESI
 Full ms [100.00-1500.00]

NL: 1.66E5
 Eagrestis#1849-1884 RT:
 4.61-4.68 AV: 6 F: FTMS
 + p ESI d Full ms2
 225.17@hcd35.00
 [50.00-480.00]