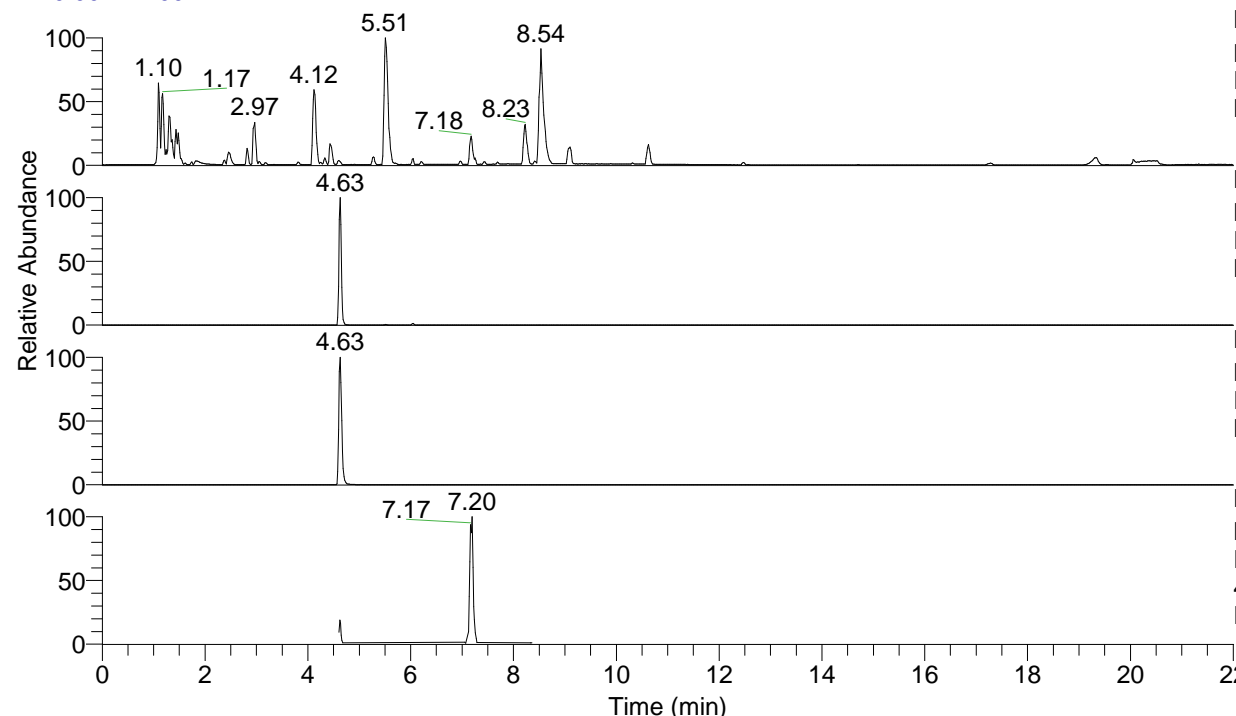


RT: 0.00 - 22.00



NL: 8.71E7
 Base Peak m/z= 100.00000-1500.00000 F:
 FTMS + p ESI Full ms [100.00-1500.00]
 MS Eagrestis

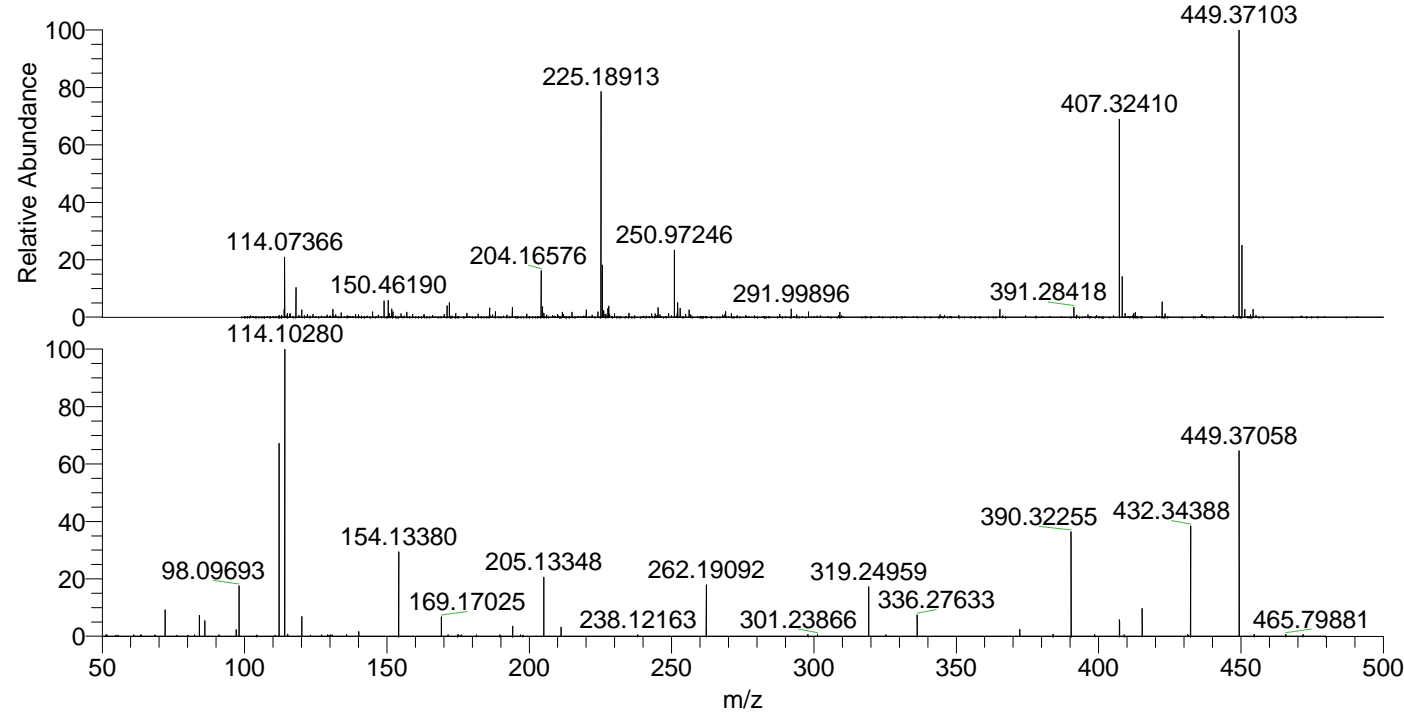
NL: 2.52E6
 Base Peak m/z= 449.36714-449.37612 F:
 FTMS + p ESI Full ms [100.00-1500.00]
 MS Eagrestis

NL: 1.97E6
 Base Peak m/z= 225.18748-225.19198 F:
 FTMS + p ESI Full ms [100.00-1500.00]
 MS Eagrestis

NL: 1.69E6
 Base Peak m/z= 50.00000-1500.00000 F:
 FTMS + p ESI d Full ms2
 449.32@hcd35.00 [50.00-475.00] MS
 Eagrestis

Eagrestis#1853-1868 RT: 4.61-4.65 AV:
 F: FTMS + p ESI d Full ms2 449.32 ...
 m/z= 50.00000-1000.00000

m/z	Intensity	Relative
51.31237	1084.8	0.52
61.06820	1045.5	0.50
72.08156	18808.0	9.07
84.08163	15264.3	7.36
86.06086	11021.7	5.32
97.07689	4863.7	2.35
98.09693	36367.3	17.54
112.11240	137808.8	66.46
114.10280	207365.5	100.00
115.12333	1428.8	0.69
120.08123	14004.9	6.75
129.13866	1040.5	0.50
130.21820	1103.7	0.53
130.83213	1062.0	0.51
135.88087	1167.7	0.56
140.11873	3265.5	1.57
154.13380	60371.9	29.11
169.17025	14503.5	6.99
176.11876	1110.0	0.54
181.45187	1068.4	0.52
194.16556	7165.0	3.46
196.92057	1077.3	0.52
205.13348	42998.0	20.74
211.19226	6467.2	3.12
238.12163	1122.6	0.54
262.19092	37039.5	17.86
297.91345	1233.0	0.59
301.23866	1249.4	0.60
319.24959	35779.1	17.25
325.33346	1125.8	0.54
336.27633	15534.1	7.49
372.31243	4849.6	2.34
384.05432	1408.8	0.68
390.32255	76569.0	36.92
398.64994	1174.7	0.57
407.34576	11927.8	5.75
409.01441	1131.5	0.55
415.31879	20008.1	9.65
431.35676	1207.4	0.58
432.34388	78930.1	38.06
449.37058	137708.9	66.41
454.68443	1207.4	0.58
465.79881	1325.8	0.64
471.78873	1168.9	0.56



NL: 2.48E6
 Eagrestis#1861 RT: 4.63
 AV: 1 T: FTMS + p ESI
 Full ms [100.00-1500.00]

NL: 2.05E5
 Eagrestis#1851-1873 RT:
 4.61-4.65 AV: 4 F: FTMS
 + p ESI d Full ms2
 449.32@hcd35.00
 [50.00-475.00]

m/z	Intensity	Relative
114.10280	207365.5	100.00
114.07366	1084.8	0.52
150.46190	1045.5	0.50
204.16576	18808.0	9.07
225.18913	15264.3	7.36
250.97246	11021.7	5.32
291.99896	4863.7	2.35
391.28418	36367.3	17.54
407.32410	137808.8	66.46
449.37103	207365.5	100.00