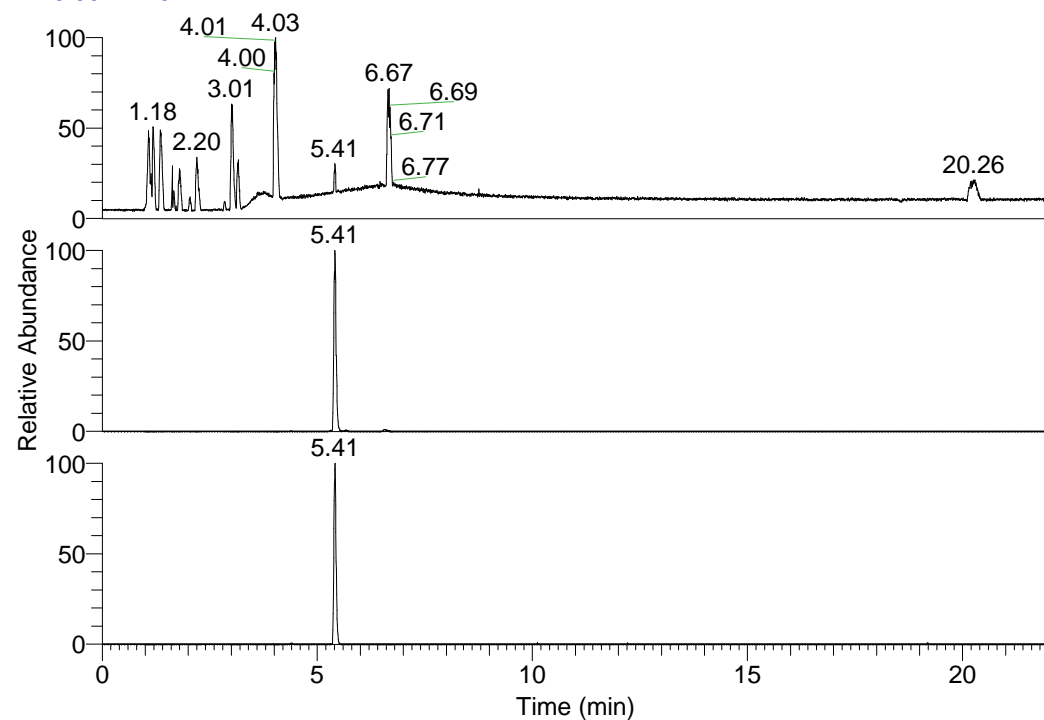


RT: 0.00 - 22.01



NL: 1.58E8
 Base Peak m/z=
 100.00000-1500.00000 F:
 FTMS + p ESI Full ms
 [100.00-1500.00] MS
 Egrestis_HDX

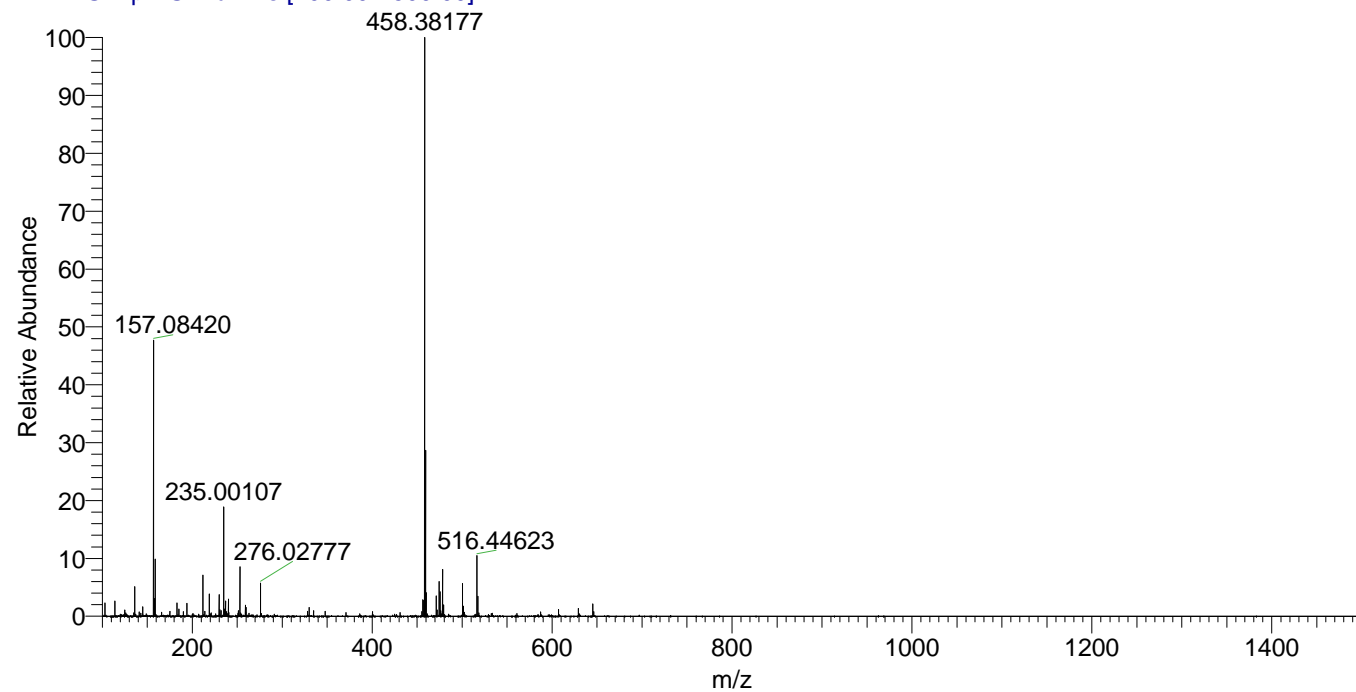
NL: 4.79E7
 Base Peak m/z=
 458.37822-458.38280 F:
 FTMS + p ESI Full ms
 [100.00-1500.00] MS
 Egrestis_HDX

NL: 1.94E6
 Base Peak m/z=
 230.19615-230.19845 F:
 FTMS + p ESI Full ms
 [100.00-1500.00] MS
 Egrestis_HDX

Egrestis_HDX#865 RT: 5.41
 T: FTMS + p ESI Full ms [100.00-1500.00]
 m/z= 458.00000-459.00000

m/z	Intensity	Relative	Delta (ppm)	Composition
458.38177	47889024.0	100.00	0.59	C ₂₃ H ₃₄ ² H ₈ O ₃ N ₆
			-2.79	C ₂₃ H ₃₆ ² H ₇ O ₃ N ₆
			3.97	C ₂₃ H ₃₂ ² H ₉ O ₃ N ₆

Egrestis_HDX #865 RT: 5.41 AV: 1 NL: 4.69E7
 T: FTMS + p ESI Full ms [100.00-1500.00]



Egrestis_HDX #865 RT: 5.41 AV: 1 NL: 4.69E7
 T: FTMS + p ESI Full ms [100.00-1500.00]

