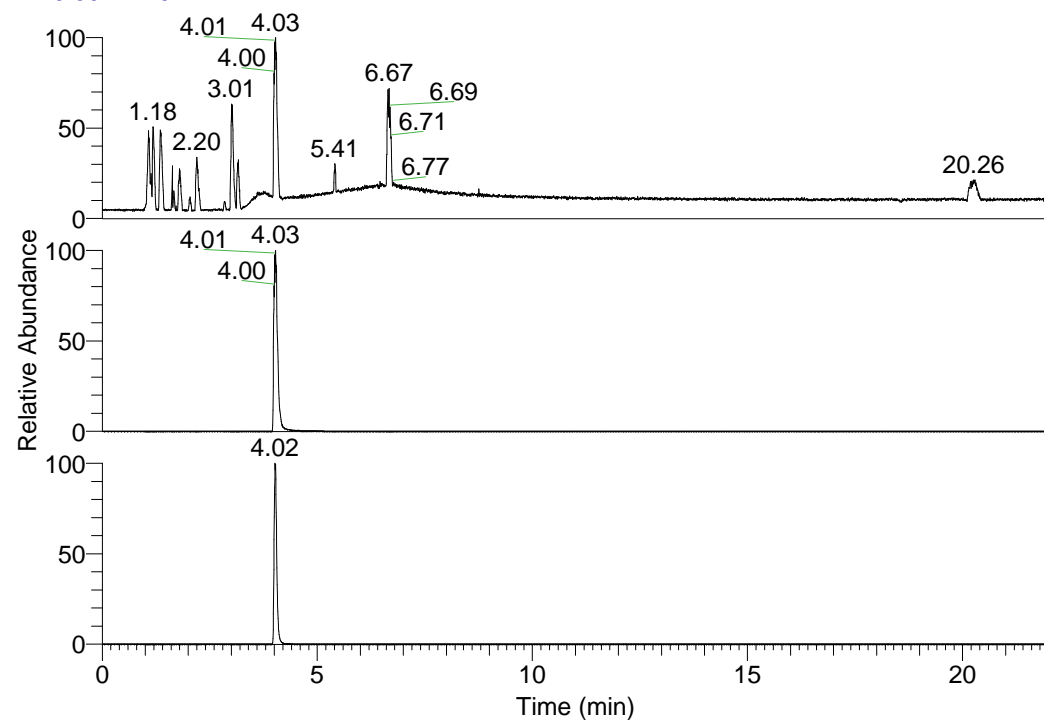


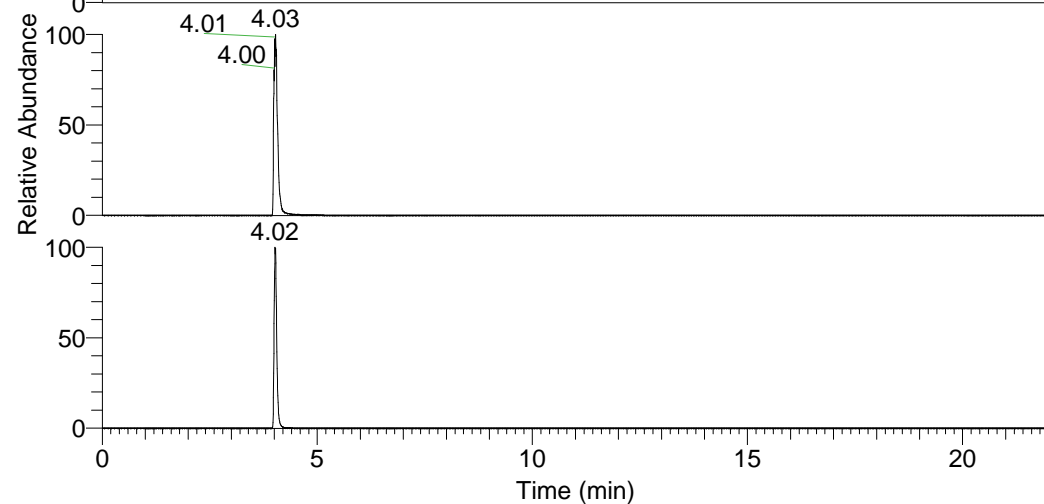
RT: 0.00 - 22.01



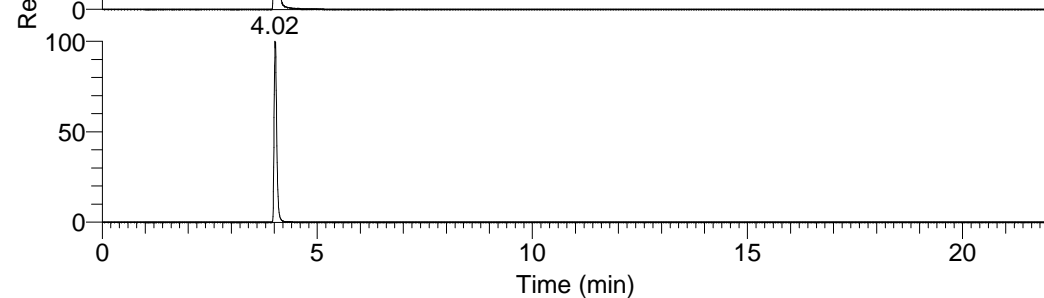
NL: 1.58E8
Base Peak m/z=
100.00000-1500.00000 F:
FTMS + p ESI Full ms
[100.00-1500.00] MS
Egrestis_HDX

Egrestis_HDX#640 RT: 4.03
T: FTMS + p ESI Full ms [100.00-1500.00]
m/z= 448.00000-449.00000

m/z	Intensity	Relative	Delta (ppm)	Composition
448.38324	158165168.0	100.00	0.47	C ₂₁ H ₃₂ ² H ₉ O ₃ N ₇
			-2.99	C ₂₁ H ₃₄ ² H ₈ O ₃ N ₇
			3.92	C ₂₁ H ₃₀ ² H ₁₀ O ₃ N ₇

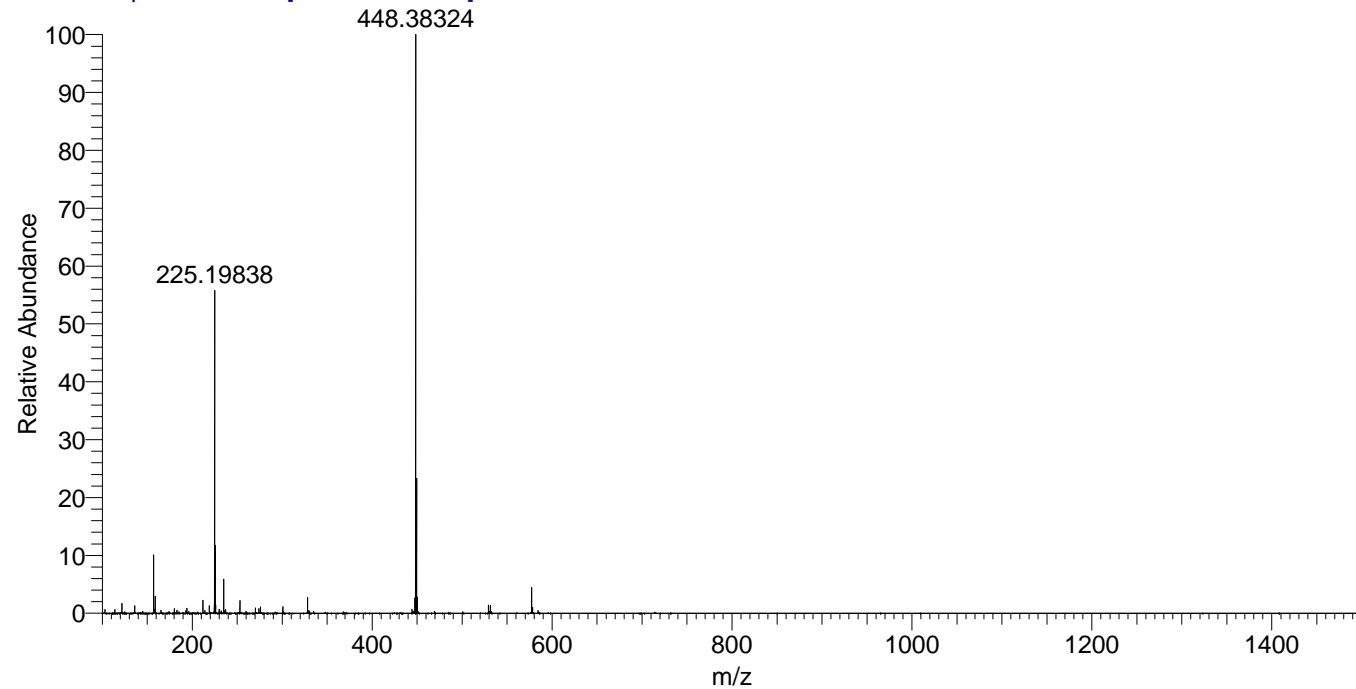


NL: 1.58E8
Base Peak m/z=
448.37979-448.38427 F:
FTMS + p ESI Full ms
[100.00-1500.00] MS
Egrestis_HDX



NL: 8.77E7
Base Peak m/z=
225.19694-225.19920 F:
FTMS + p ESI Full ms
[100.00-1500.00] MS
Egrestis_HDX

Egrestis_HDX #640 RT: 4.03 AV: 1 NL: 1.56E8
T: FTMS + p ESI Full ms [100.00-1500.00]



Egrestis_HDX #640 RT: 4.03 AV: 1 NL: 1.56E8
T: FTMS + p ESI Full ms [100.00-1500.00]

