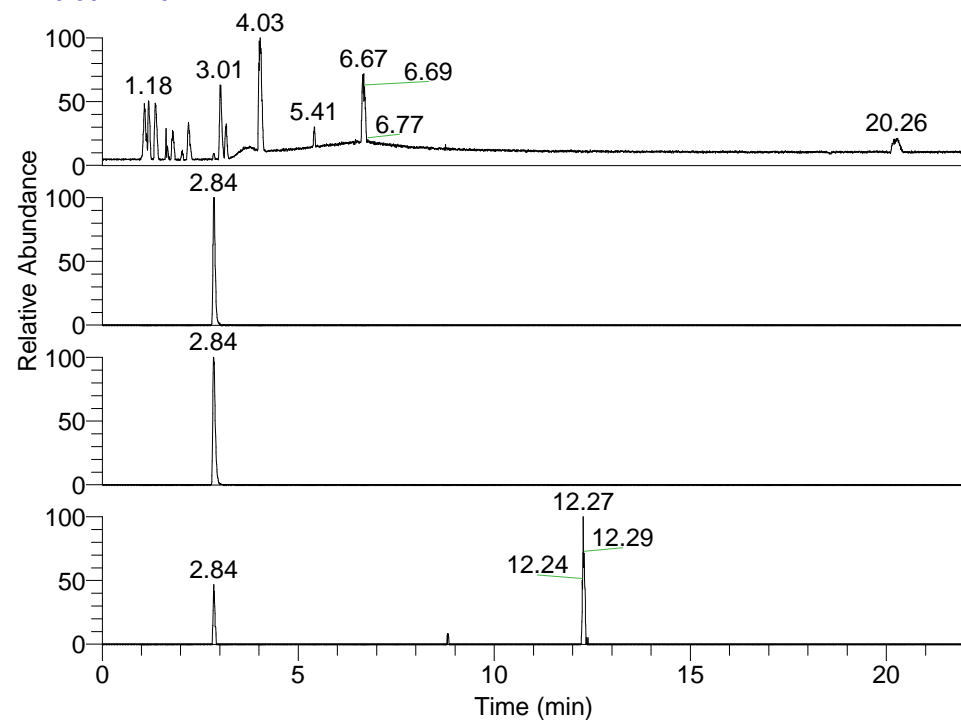


RT: 0.00 - 22.01



NL: 1.58E8
 Base Peak m/z=
 100.00000-1500.00000 F: FTMS + p
 ESI Full ms [100.00-1500.00] MS
 Eagrestis_HDX

NL: 1.80E6
 Base Peak m/z=
 441.39433-441.39875 F: FTMS + p
 ESI Full ms [100.00-1500.00] MS
 Eagrestis_HDX

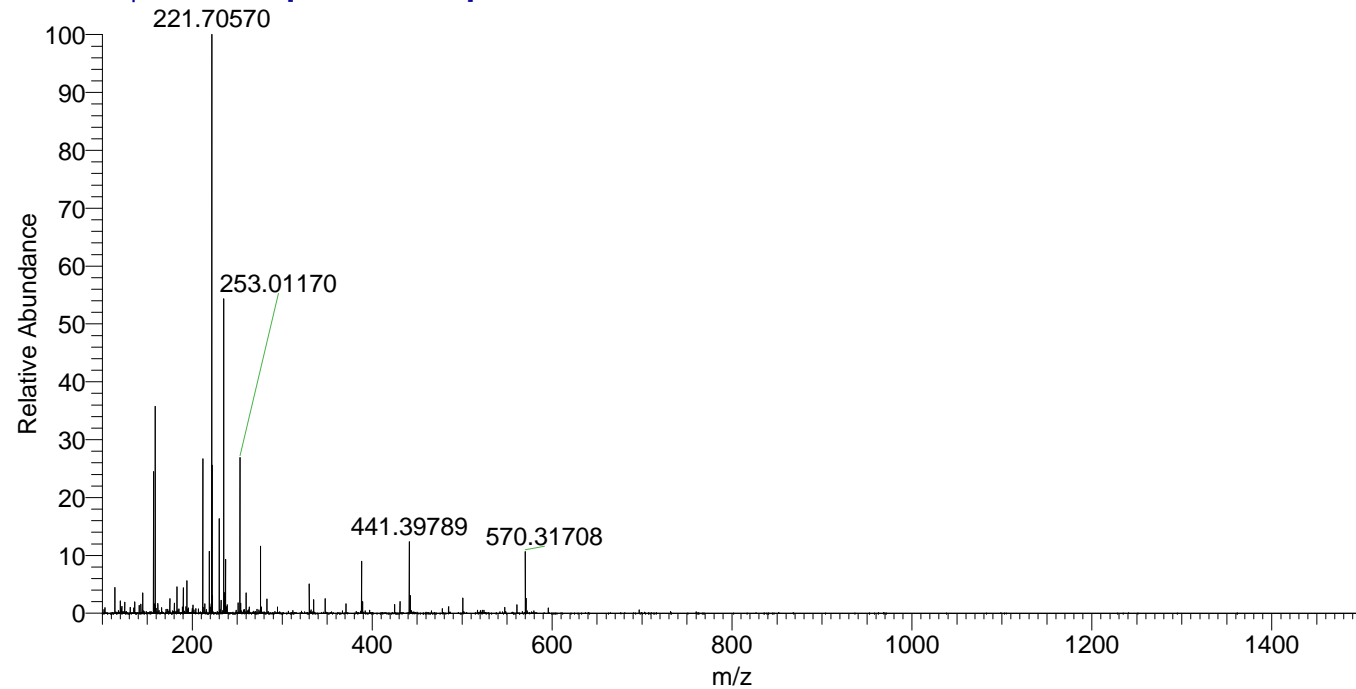
NL: 1.49E7
 Base Peak m/z=
 221.70421-221.70643 F: FTMS + p
 ESI Full ms [100.00-1500.00] MS
 Eagrestis_HDX

NL: 6.62E4
 Base Peak m/z=
 556.39290-556.39846 F: FTMS + p
 ESI Full ms [100.00-1500.00] MS
 Eagrestis_HDX

Eagrestis_HDX#445 RT: 2.84
 T: FTMS + p ESI Full ms [100.00-1500.00]
 m/z= 441.00000-442.00000

m/z	Intensity	Relative	Delta (ppm)	Composition
441.39789	1801442.8	100.00	0.80	C ₂₄ H ₄₃ ² H ₄ O ₂ N ₅
			-2.71	C ₂₄ H ₄₅ ² H ₃ O ₂ N ₅
			4.31	C ₂₄ H ₄₁ ² H ₅ O ₂ N ₅

Eagrestis_HDX #445 RT: 2.84 AV: 1 NL: 1.45E7
 T: FTMS + p ESI Full ms [100.00-1500.00]



Eagrestis_HDX #445 RT: 2.84 AV: 1 NL: 1.79E6
 T: FTMS + p ESI Full ms [100.00-1500.00]

