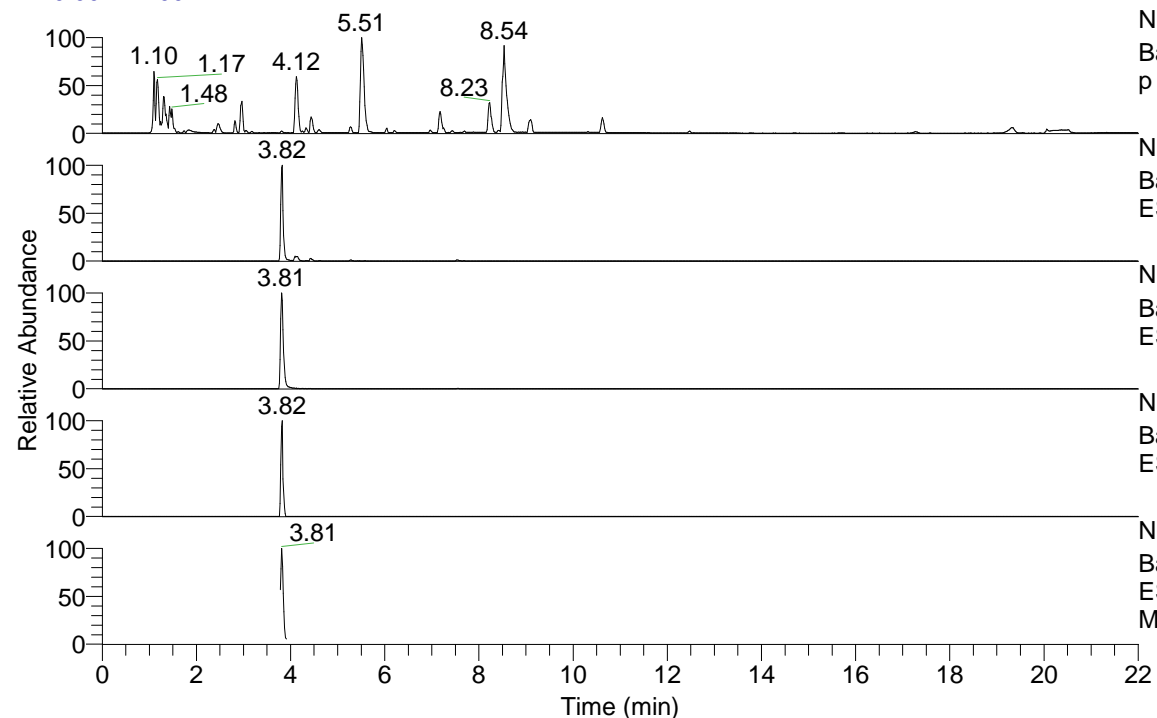


RT: 0.00 - 22.00



NL: 8.71E7
 Base Peak m/z= 100.00000-1500.00000 F: FTMS + p ESI Full ms [100.00-1500.00] MS Eagrestis

NL: 1.55E6
 Base Peak m/z= 436.36079-436.36951 F: FTMS + p ESI Full ms [100.00-1500.00] MS Eagrestis

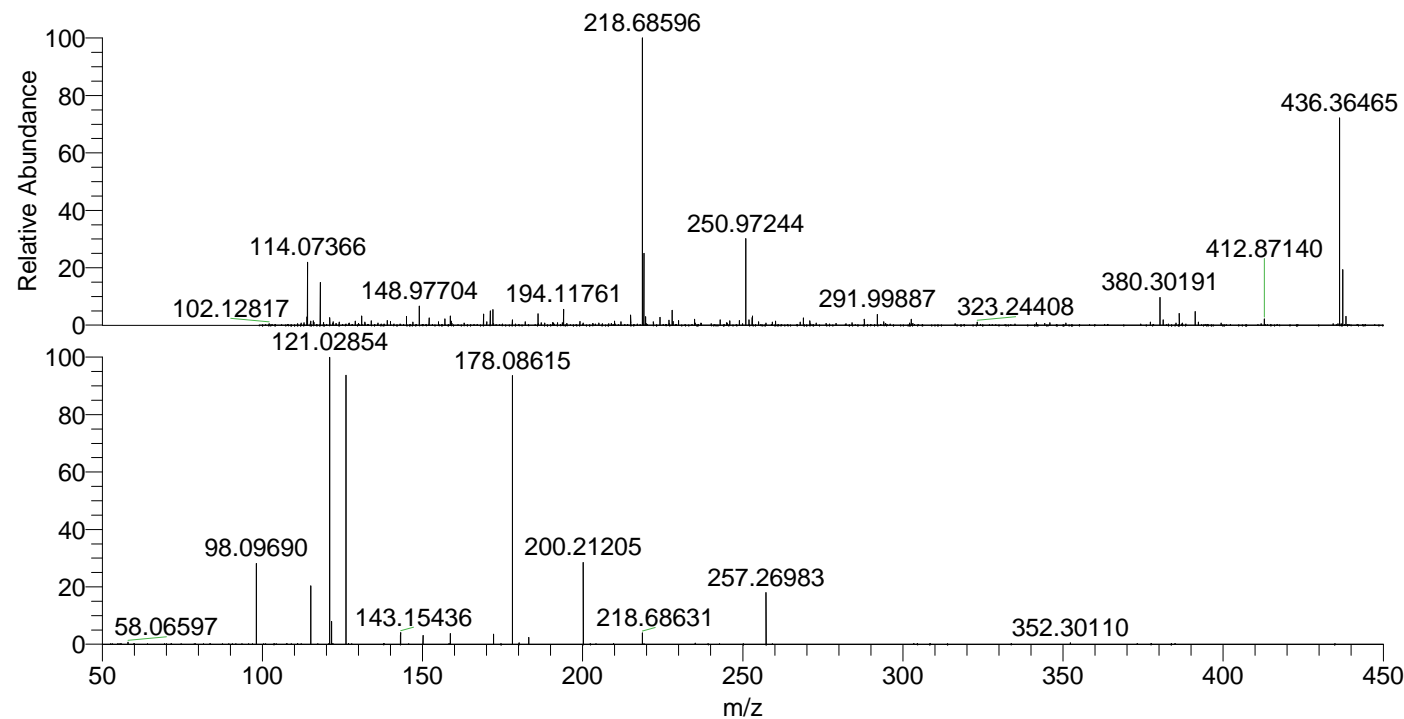
NL: 2.20E6
 Base Peak m/z= 218.68430-218.68868 F: FTMS + p ESI Full ms [100.00-1500.00] MS Eagrestis

NL: 4.11E4
 Base Peak m/z= 550.35251-550.36351 F: FTMS + p ESI Full ms [100.00-1500.00] MS Eagrestis

NL: 3.64E5
 Base Peak m/z= 50.00000-1500.00000 F: FTMS + p ESI d Full ms2 218.69@hcd35.00 [50.00-465.00] MS Eagrestis

Eagrestis#1522-1538 RT: 3.79-3.83 AV: F: FTMS + p ESI d Full ms2 218.69 ... m/z= 50.00000-1000.00000

m/z	Intensity	Relative
58.06597	2585.1	0.94
98.09688	76866.9	27.93
115.12325	56108.6	20.39
121.02854	275222.8	100.00
121.63339	21366.5	7.76
126.12781	248708.8	90.37
143.15435	11332.0	4.12
150.16246	8712.5	3.17
158.67535	11303.1	4.11
172.18140	11048.1	4.01
178.08619	249868.0	90.79
180.14436	1755.2	0.64
183.18561	8438.5	3.07
200.21213	76422.0	27.77
218.68633	11929.8	4.33
257.26991	46451.6	16.88



NL: 2.01E6
 Eagrestis#1537 RT: 3.82 AV: 1 T: FTMS + p ESI Full ms [100.00-1500.00]

NL: 2.26E5
 Eagrestis#1521-1552 RT: 3.79-3.86 AV: 6 F: FTMS + p ESI d Full ms2 218.69@hcd35.00 [50.00-465.00]