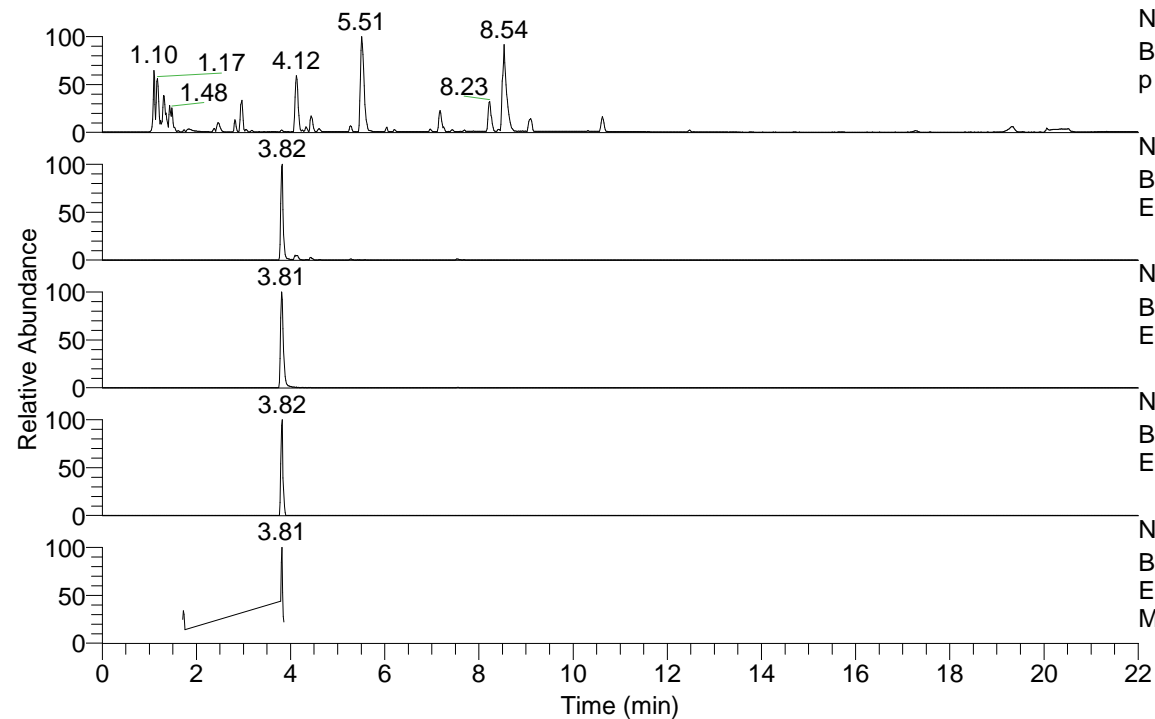


RT: 0.00 - 22.00



NL: 8.71E7

Base Peak m/z= 100.00000-1500.00000 F: FTMS +
p ESI Full ms [100.00-1500.00] MS Eagrestis

NL: 1.55E6

Base Peak m/z= 436.36079-436.36951 F: FTMS + p
ESI Full ms [100.00-1500.00] MS Eagrestis

NL: 2.20E6

Base Peak m/z= 218.68430-218.68868 F: FTMS + p
ESI Full ms [100.00-1500.00] MS Eagrestis

NL: 4.11E4

Base Peak m/z= 550.35251-550.36351 F: FTMS + p
ESI Full ms [100.00-1500.00] MS Eagrestis

NL: 4.41E5

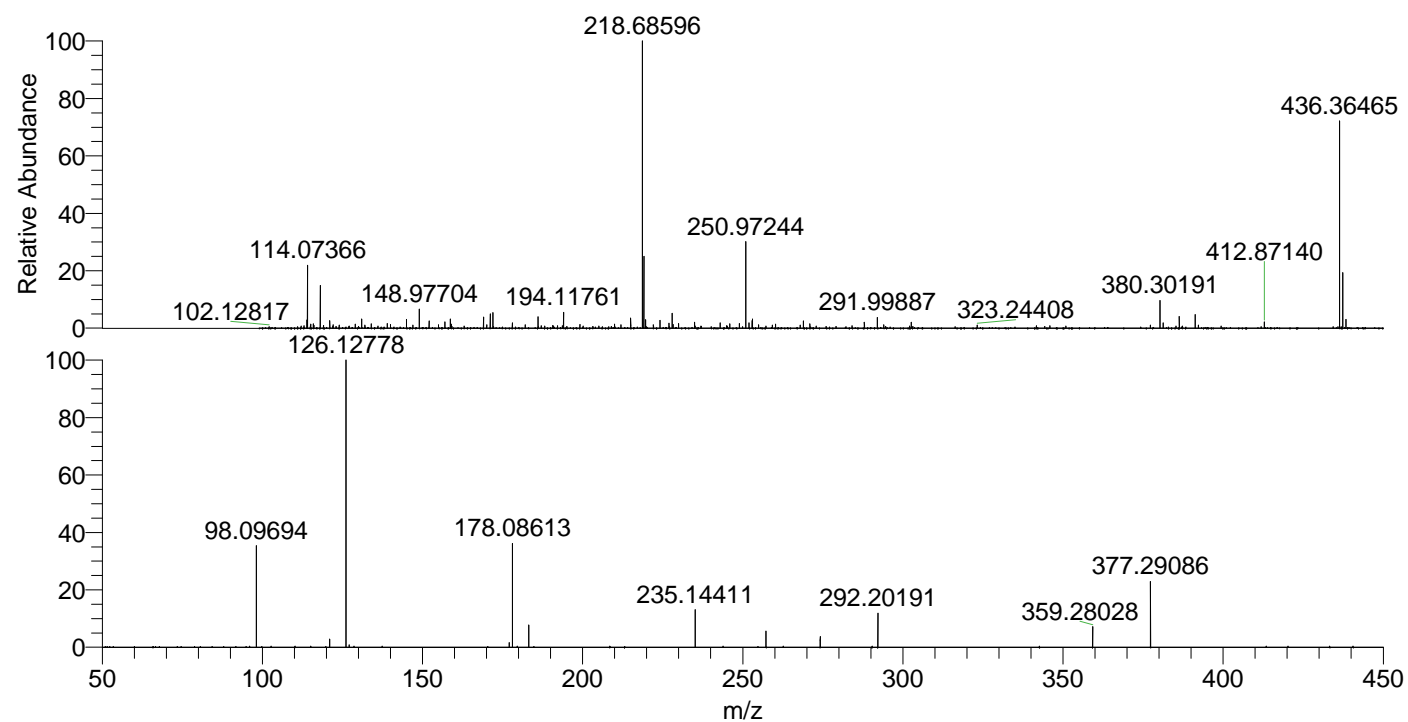
Base Peak m/z= 50.00000-1500.00000 F: FTMS + p
ESI d Full ms2 436.31@hcd35.00 [50.00-465.00]
MS Eagrestis

Eagrestis#1524-1539 RT: 3.79-3.83 AV:

F: FTMS + p ESI d Full ms2 436.31 ...

m/z= 50.00000-1000.00000

m/z	Intensity	Relative
98.09694	103341.7	35.42
121.02862	8561.1	2.93
126.12778	291802.1	100.00
127.12222	2267.2	0.78
177.10286	4683.1	1.60
178.08613	104806.0	35.92
183.18546	23446.1	8.03
235.14411	38035.2	13.03
257.26972	16332.6	5.60
274.19143	10922.4	3.74
292.20191	35727.3	12.24
359.28028	20824.5	7.14
377.29086	67429.0	23.11



NL: 2.01E6

Eagrestis#1537 RT: 3.82
AV: 1 T: FTMS + p ESI
Full ms [100.00-1500.00]

NL: 2.89E5

Eagrestis#1523-1540 RT:
3.79-3.83 AV: 4 F: FTMS
+ p ESI d Full ms2
436.31@hcd35.00
[50.00-465.00]