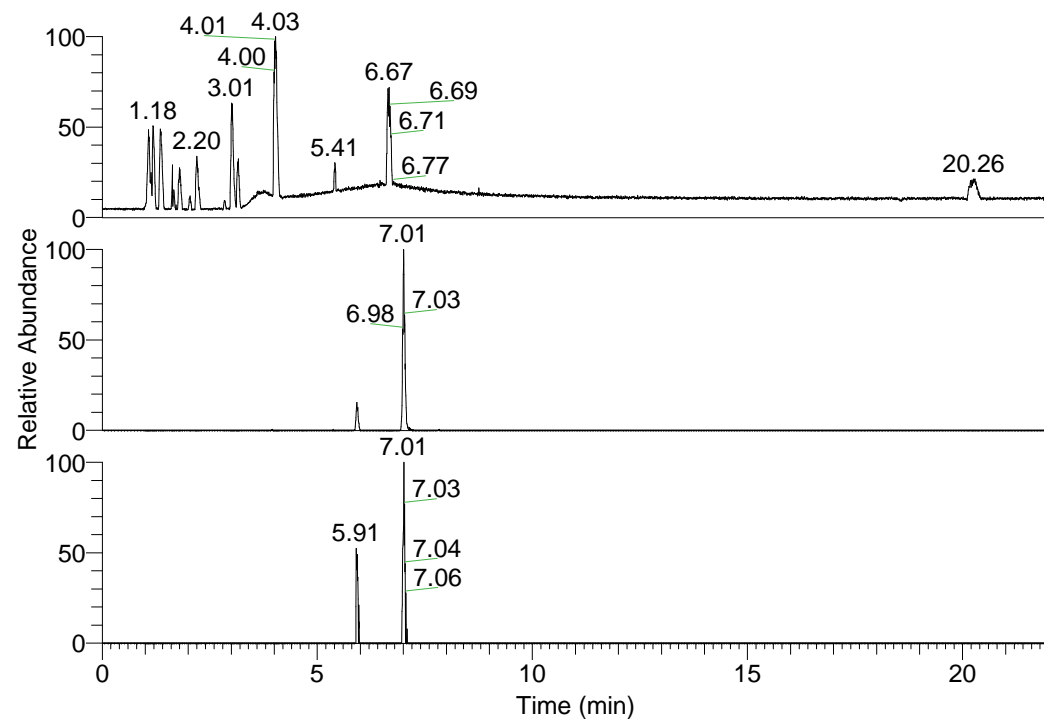


RT: 0.00 - 22.01



NL: 1.58E8  
 Base Peak m/z=  
 100.00000-1500.00000 F:  
 FTMS + p ESI Full ms  
 [100.00-1500.00] MS  
 Egrestis\_HDX

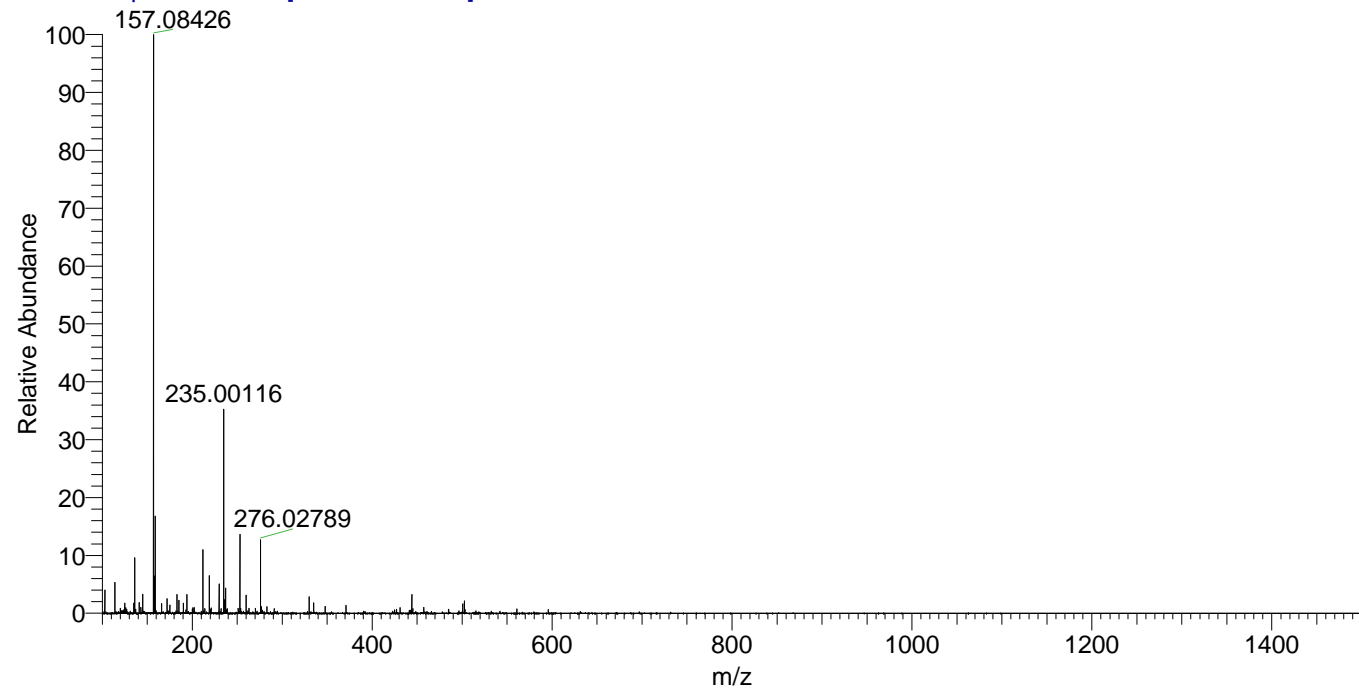
NL: 9.09E5  
 Base Peak m/z=  
 444.34851-444.35295 F:  
 FTMS + p ESI Full ms  
 [100.00-1500.00] MS  
 Egrestis\_HDX

NL: 5.41E4  
 Base Peak m/z=  
 223.18130-223.18354 F:  
 FTMS + p ESI Full ms  
 [100.00-1500.00] MS  
 Egrestis\_HDX

Egrestis\_HDX#1132 RT: 7.01  
 T: FTMS + p ESI Full ms [100.00-1500.00]  
 m/z= 444.00000-445.00000

| m/z       | Intensity | Relative | Delta (ppm) | Composition  |
|-----------|-----------|----------|-------------|--|
| 444.35220 | 909266.9  | 100.00   | 1.06        | C <sub>21</sub> H <sub>28</sub> <sup>2</sup> H <sub>9</sub> O <sub>3</sub> N <sub>7</sub>  |
|           |           |          | -2.42       | C <sub>21</sub> H <sub>30</sub> <sup>2</sup> H <sub>8</sub> O <sub>3</sub> N <sub>7</sub>  |
|           |           |          | 4.55        | C <sub>21</sub> H <sub>26</sub> <sup>2</sup> H <sub>10</sub> O <sub>3</sub> N <sub>7</sub> |

Egrestis\_HDX #1132 RT: 7.01 AV: 1 NL: 2.70E7  
 T: FTMS + p ESI Full ms [100.00-1500.00]



Egrestis\_HDX #1132 RT: 7.01 AV: 1 NL: 8.72E5  
 T: FTMS + p ESI Full ms [100.00-1500.00]

