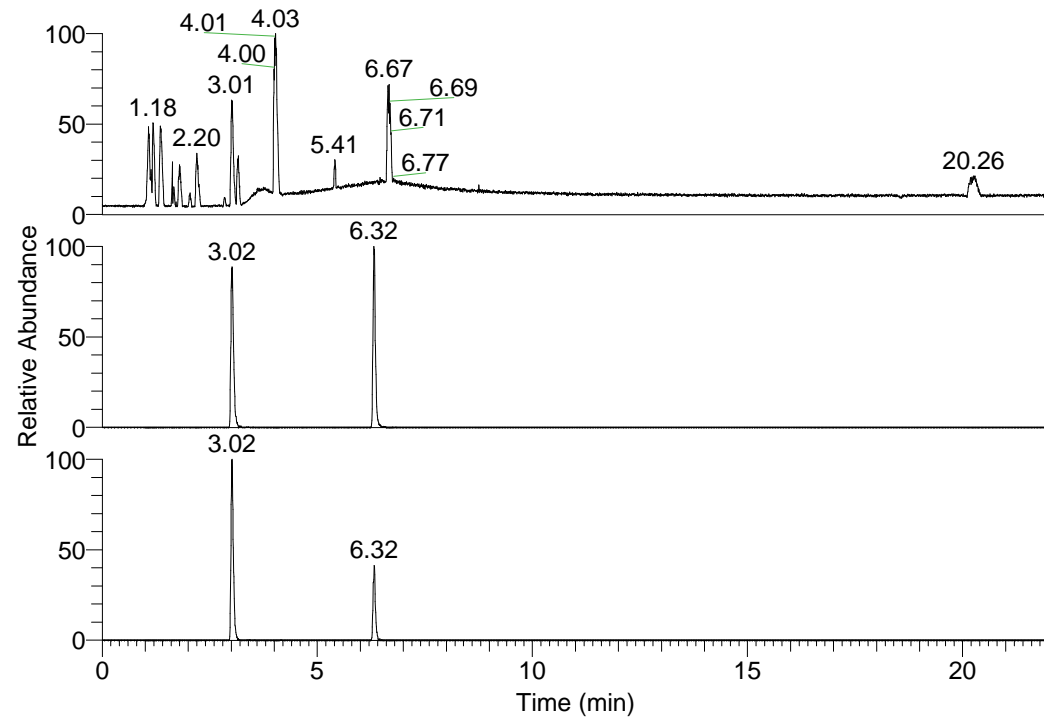


RT: 0.00 - 22.01



NL: 1.58E8  
 Base Peak m/z=  
 100.00000-1500.00000 F:  
 FTMS + p ESI Full ms  
 [100.00-1500.00] MS  
 Egrestis\_HDX

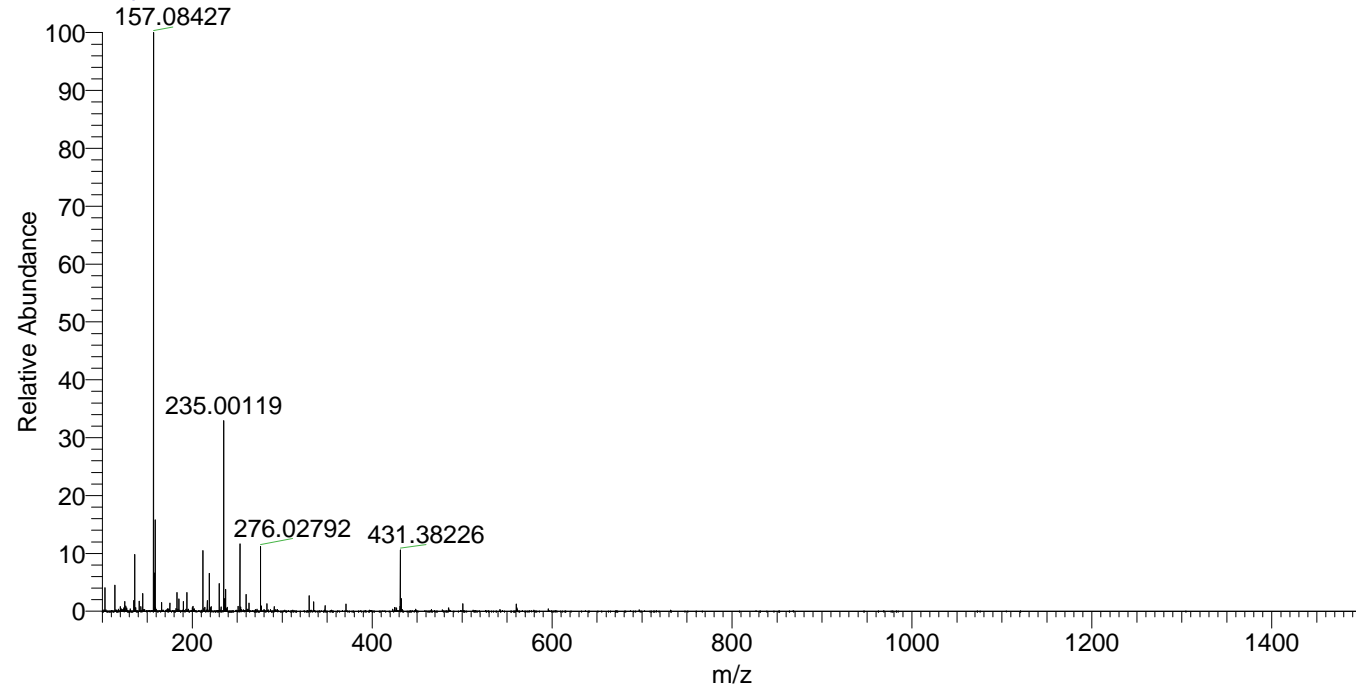
NL: 3.04E6  
 Base Peak m/z=  
 431.37868-431.38300 F:  
 FTMS + p ESI Full ms  
 [100.00-1500.00] MS  
 Egrestis\_HDX

NL: 1.21E6  
 Base Peak m/z=  
 216.69639-216.69855 F:  
 FTMS + p ESI Full ms  
 [100.00-1500.00] MS  
 Egrestis\_HDX

Egrestis\_HDX#1015 RT: 6.32  
 T: FTMS + p ESI Full ms [100.00-1500.00]  
 m/z= 431.00000-432.00000

m/z	Intensity	Relative	Delta (ppm)	Composition
431.38226	2904662.5	100.00	0.98	C <sub>21</sub> H <sub>33</sub> <sup>2</sup> H <sub>8</sub> O <sub>2</sub> N <sub>7</sub>
			-2.61	C <sub>21</sub> H <sub>35</sub> <sup>2</sup> H <sub>7</sub> O <sub>2</sub> N <sub>7</sub>
			4.57	C <sub>21</sub> H <sub>31</sub> <sup>2</sup> H <sub>9</sub> O <sub>2</sub> N <sub>7</sub>

Egrestis\_HDX #1015 RT: 6.32 AV: 1 NL: 2.74E7  
 T: FTMS + p ESI Full ms [100.00-1500.00]



Egrestis\_HDX #1015 RT: 6.32 AV: 1 NL: 2.89E6  
 T: FTMS + p ESI Full ms [100.00-1500.00]

