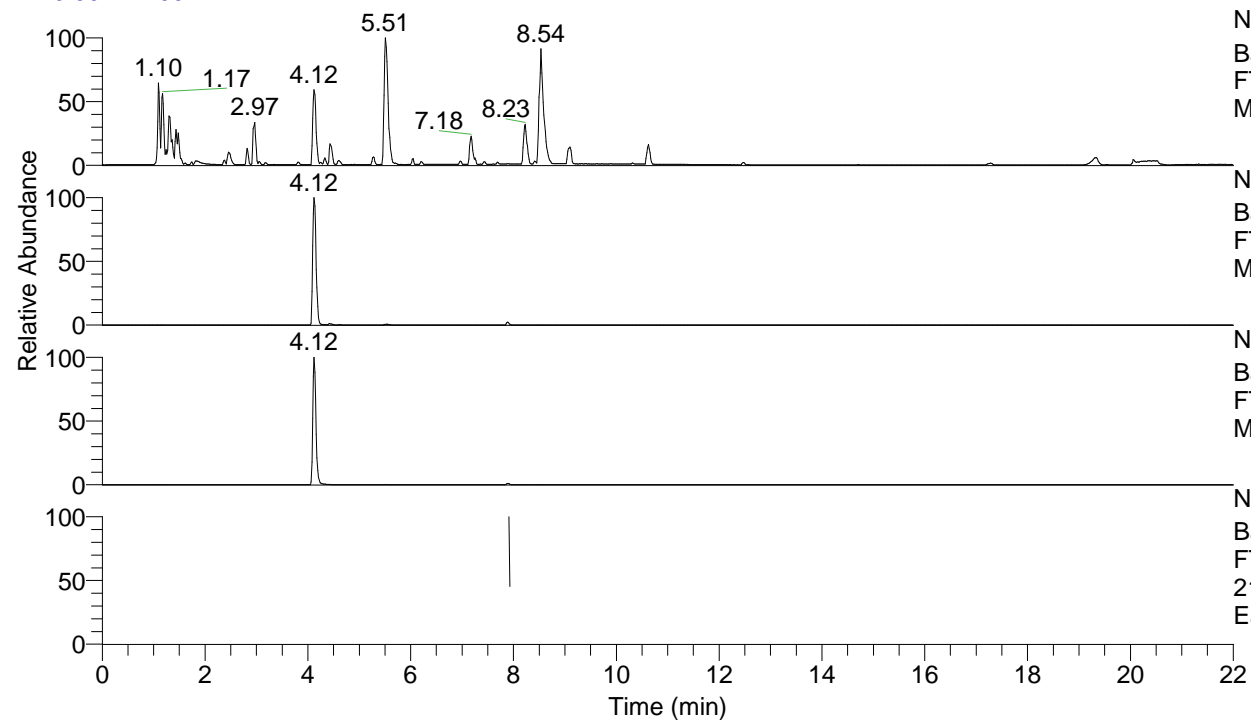


RT: 0.00 - 22.00



NL: 8.71E7
 Base Peak m/z= 100.00000-1500.00000 F:
 FTMS + p ESI Full ms [100.00-1500.00]
 MS Eagrestis

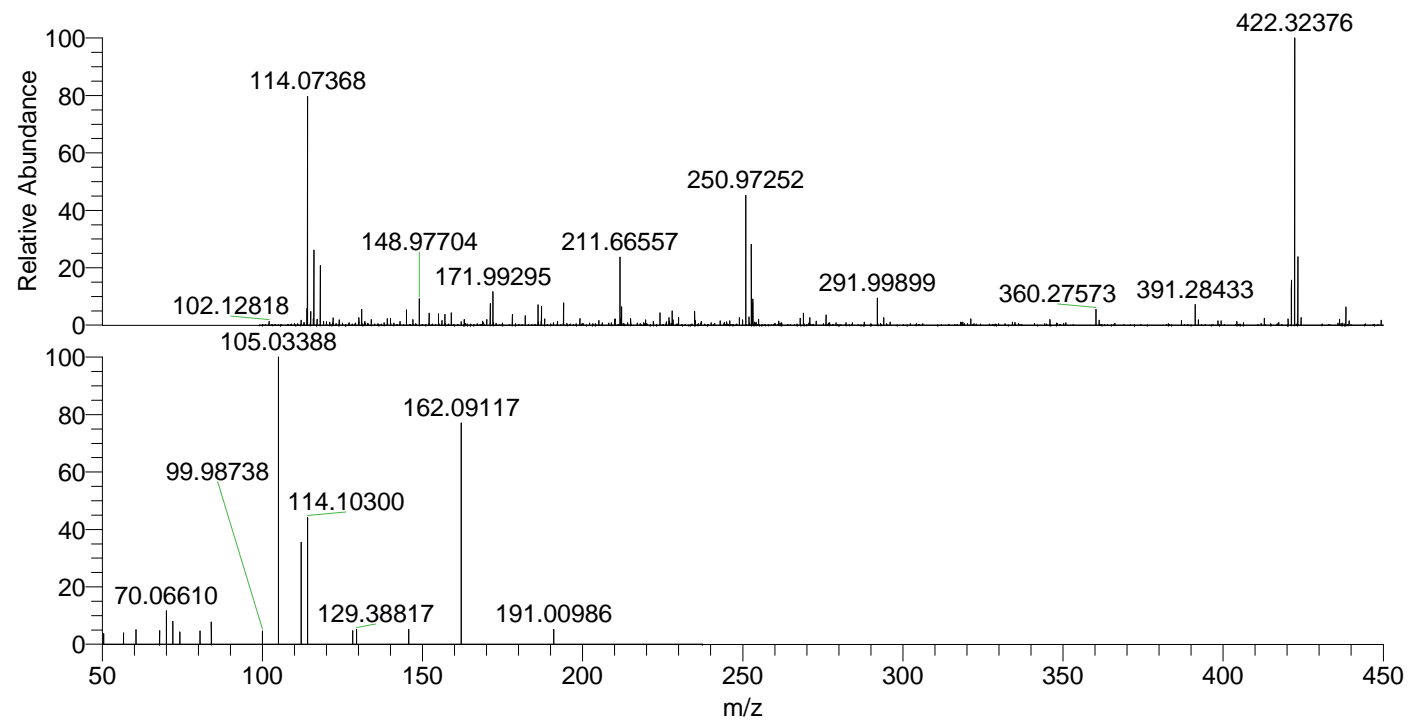
NL: 5.17E7
 Base Peak m/z= 422.32013-422.32857 F:
 FTMS + p ESI Full ms [100.00-1500.00]
 MS Eagrestis

NL: 2.39E7
 Base Peak m/z= 211.66397-211.66821 F:
 FTMS + p ESI Full ms [100.00-1500.00]
 MS Eagrestis

NL: 3.82E4
 Base Peak m/z= 50.00000-1500.00000 F:
 FTMS + p ESI d Full ms2
 211.67@hcd35.00 [50.00-235.00] MS
 Eagrestis

Eagrestis#3173-3180 RT: 7.91-7.93 AV:
 F: FTMS + p ESI d Full ms2 211.67 ...
 m/z= 50.00000-1000.00000

m/z	Intensity	Relative
50.44493	954.2	3.69
56.62332	1012.6	3.91
60.55714	1301.5	5.03
67.89308	1230.7	4.76
70.06610	3073.1	11.88
72.08153	2074.4	8.02
74.21246	1107.3	4.28
80.57984	1200.0	4.64
84.08141	2037.6	7.87
99.98738	1246.0	4.81
105.03388	25878.4	100.00
112.08833	1344.9	5.20
112.11245	9210.4	35.59
114.10300	11553.5	44.65
128.21311	1211.1	4.68
129.38817	1368.5	5.29
145.69012	1356.8	5.24
162.09117	20345.9	78.62
191.00986	1343.1	5.19



NL: 1.14E6
 Eagrestis#3163 RT: 7.89
 AV: 1 T: FTMS + p ESI
 Full ms [100.00-1500.00]

NL: 2.58E4
 Eagrestis#3166-3192 RT:
 7.91-7.93 AV: 2 F: FTMS
 + p ESI d Full ms2
 211.67@hcd35.00
 [50.00-235.00]