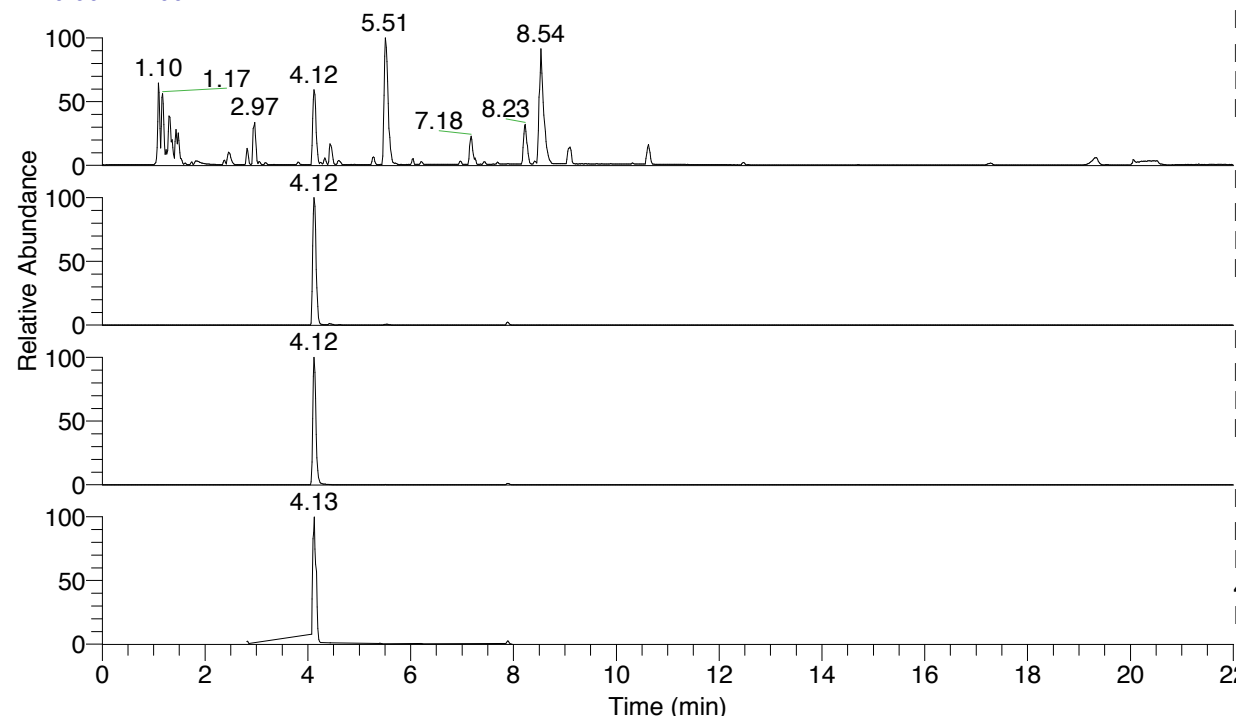


RT: 0.00 - 22.00



NL: 8.71E7
 Base Peak m/z= 100.00000-1500.00000 F:
 FTMS + p ESI Full ms [100.00-1500.00]
 MS Eagrestis

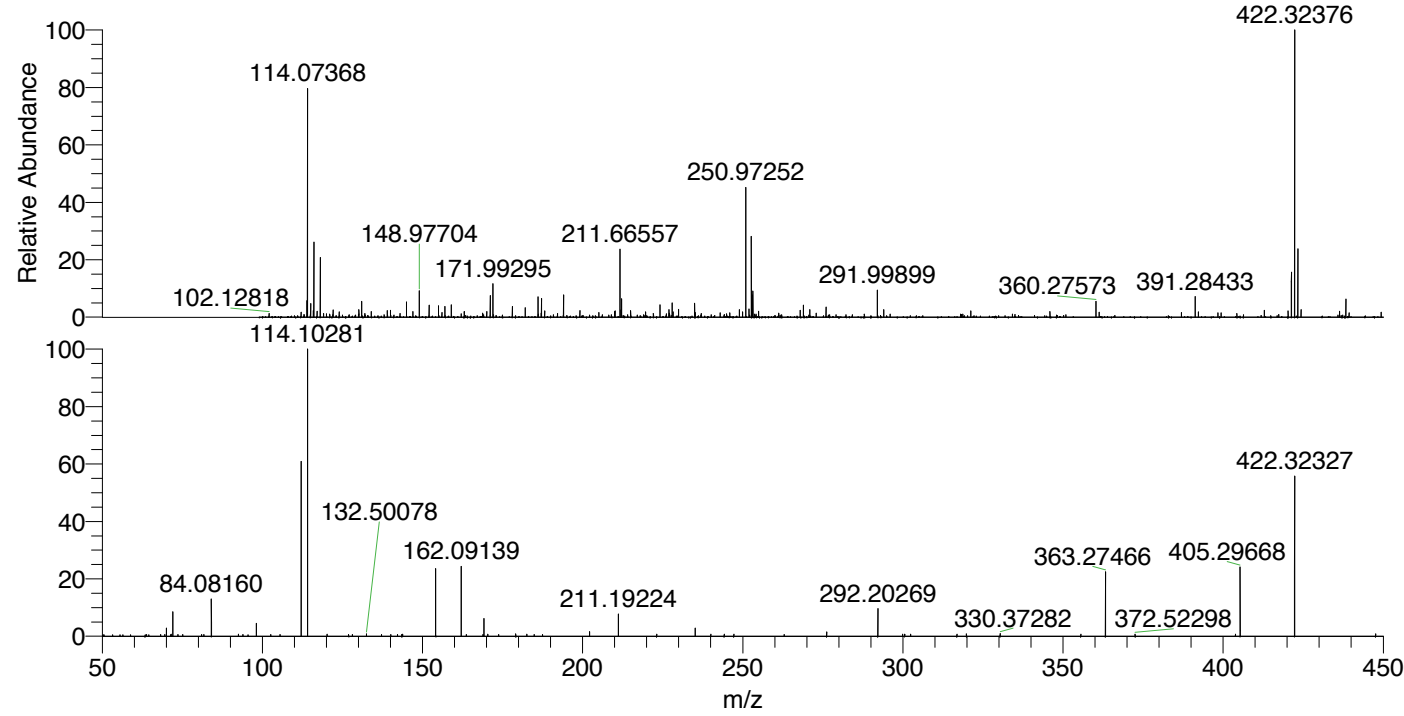
NL: 5.17E7
 Base Peak m/z= 422.32013-422.32857 F:
 FTMS + p ESI Full ms [100.00-1500.00]
 MS Eagrestis

NL: 2.39E7
 Base Peak m/z= 211.66397-211.66821 F:
 FTMS + p ESI Full ms [100.00-1500.00]
 MS Eagrestis

NL: 6.55E6
 Base Peak m/z= 50.00000-1500.00000 F:
 FTMS + p ESI d Full ms2
 422.31@hcd35.00 [50.00-450.00] MS
 Eagrestis

Eagrestis#3150-3176 RT: 7.85-7.92 AV:
 F: FTMS + p ESI d Full ms2 422.31 ...
 m/z= 50.00000-1000.00000

m/z	Intensity	Relative
70.06589	2826.4	2.70
71.53509	718.6	0.69
72.08163	8308.2	7.93
84.08160	13043.6	12.45
92.49275	685.5	0.65
98.09718	4438.6	4.24
103.65023	873.7	0.83
112.11240	64321.5	61.40
114.10281	104750.9	100.00
120.18241	678.8	0.65
132.50078	784.2	0.75
137.06434	651.8	0.62
140.11845	665.0	0.63
143.54790	652.5	0.62
143.83421	702.0	0.67
154.13396	23780.8	22.70
162.09139	24659.4	23.54
163.69743	628.8	0.60
168.89957	644.2	0.61
169.17041	6281.9	6.00
170.41921	706.9	0.67
179.12737	828.8	0.79
182.58723	742.5	0.71
183.63039	632.0	0.60
184.86413	656.8	0.63
202.19244	1680.9	1.60
208.93735	659.8	0.63
210.45890	762.3	0.73
211.19224	7539.9	7.20
223.12096	705.3	0.67
235.14520	2834.1	2.71
240.01319	732.1	0.70
244.21483	749.1	0.72
247.21888	723.4	0.69
261.06736	688.5	0.66
262.93109	633.6	0.60
276.20629	1536.3	1.47
292.20269	9618.7	9.18
299.90868	683.6	0.65
300.57303	665.3	0.64
302.42257	723.5	0.69
316.88987	761.8	0.73
319.85211	824.3	0.79
330.37282	882.3	0.84
335.57321	749.1	0.72
360.21304	779.8	0.74
363.27466	22248.5	21.24
372.52298	759.0	0.72
399.40715	627.0	0.60
403.86791	729.1	0.70
405.29664	25511.4	24.35
405.34407	790.6	0.75
422.32328	56296.2	53.74
447.62743	809.5	0.77
448.79183	697.0	0.67



NL: 1.14E6
 Eagrestis#3163 RT: 7.89
 AV: 1 T: FTMS + p ESI
 Full ms [100.00-1500.00]

NL: 1.17E5
 Eagrestis#3152-3181 RT:
 7.86-7.92 AV: 5 F: FTMS
 + p ESI d Full ms2
 422.31@hcd35.00
 [50.00-450.00]

Egrestis#3150-3176 RT: 7.85-7.92 AV: 6

F: FTMS + p ESI d Full ms2 422.31@hcd35.00 [50.00-450.00]

m/z= 50.00000-1000.00000

m/z	Intensity	Relative
50.23449	528.7	0.50
50.56775	523.8	0.50
57.29691	552.2	0.53
59.13299	603.4	0.58
63.39487	538.5	0.51
63.82308	609.6	0.58
64.65111	536.0	0.51
68.23461	561.4	0.54
69.52443	578.3	0.55
70.06589	2826.4	2.70
71.31373	554.9	0.53
71.53509	718.6	0.69
72.08163	8308.2	7.93
73.61941	584.3	0.56
75.10349	600.6	0.57
81.02874	579.6	0.55
81.75131	538.8	0.51
81.75628	561.0	0.54
84.08160	13043.6	12.45
92.49275	685.5	0.65
93.94913	582.6	0.56
95.54477	548.2	0.52
98.09718	4438.6	4.24
102.64763	560.2	0.53
103.65023	873.7	0.83
105.53040	580.7	0.55
112.11240	64321.5	61.40
114.10281	104750.9	100.00
120.18241	678.8	0.65
126.95450	578.4	0.55
128.10774	582.1	0.56
129.52940	596.8	0.57
132.50078	784.2	0.75
137.06434	651.8	0.62
137.22158	605.1	0.58
140.11845	665.0	0.63
142.22164	563.7	0.54
143.54790	652.5	0.62
143.83421	702.0	0.67

Eagrestis#3150-3176 RT: 7.85-7.92 AV: 6

F: FTMS + p ESI d Full ms2 422.31@hcd35.00 [50.00-450.00]

m/z= 50.00000-1000.00000

m/z	Intensity	Relative
154.13396	23780.8	22.70
162.09139	24659.4	23.54
163.69743	628.8	0.60
168.89957	644.2	0.61
169.17041	6281.9	6.00
170.41921	706.9	0.67
173.75790	612.3	0.58
179.12737	828.8	0.79
182.58723	742.5	0.71
183.63039	632.0	0.60
184.86413	656.8	0.63
187.51559	621.6	0.59
202.19244	1680.9	1.60
208.93735	659.8	0.63
210.45890	762.3	0.73
211.19224	7539.9	7.20
223.12096	705.3	0.67
235.14520	2834.1	2.71
240.01319	732.1	0.70
244.21483	749.1	0.72
247.21888	723.4	0.69
261.06736	688.5	0.66
262.93109	633.6	0.60
276.20629	1536.3	1.47
292.20269	9618.7	9.18
299.90868	683.6	0.65
300.57303	665.3	0.64
302.42257	723.5	0.69
316.88987	761.8	0.73
319.85211	824.3	0.79
330.37282	882.3	0.84
355.57321	749.1	0.72
360.21304	779.8	0.74
363.27466	22248.5	21.24
372.52298	759.0	0.72
399.40715	627.0	0.60
403.86791	729.1	0.70
405.29664	25511.4	24.35
405.34407	790.6	0.75

Eagrestis#3150-3176 RT: 7.85-7.92 AV: 6

F: FTMS + p ESI d Full ms2 422.31@hcd35.00 [50.00-450.00]

m/z= 50.00000-1000.00000

m/z	Intensity	Relative
422.32328	56296.2	53.74
447.62743	809.5	0.77
448.79183	697.0	0.67