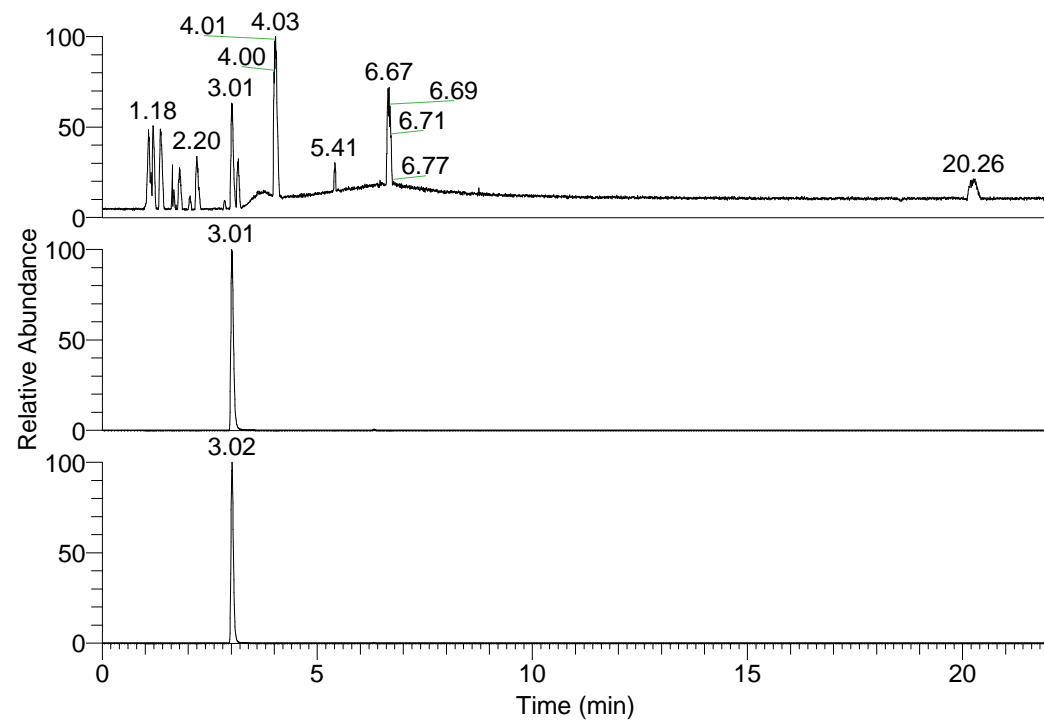


RT: 0.00 - 22.01



NL: 1.58E8  
 Base Peak m/z=  
 100.00000-1500.00000 F:  
 FTMS + p ESI Full ms  
 [100.00-1500.00] MS  
 Egrestis\_HDX

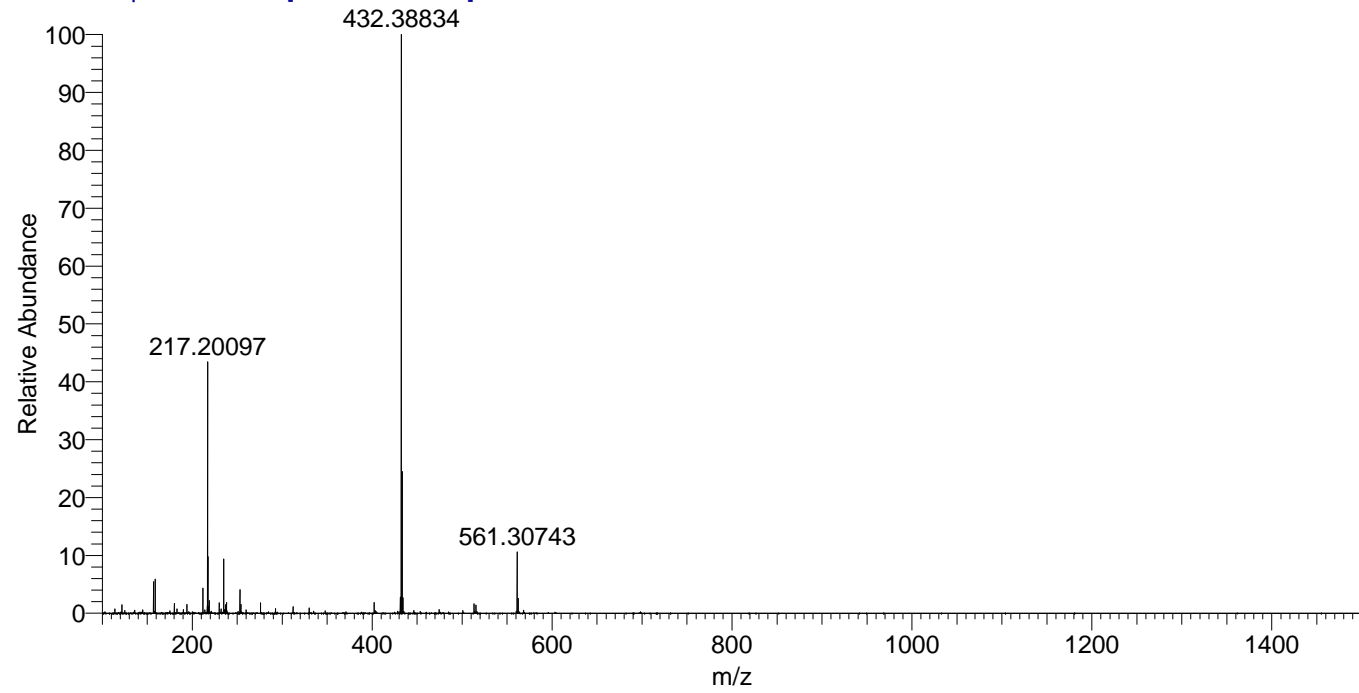
Egrestis\_HDX#472 RT: 3.01  
 T: FTMS + p ESI Full ms [100.00-1500.00]  
 m/z= 432.00000-433.00000

m/z	Intensity	Relative	Delta (ppm)	Composition
432.38834	100089736.0	100.00	0.51	C <sub>21</sub> H <sub>32</sub> <sup>2</sup> H <sub>9</sub> O <sub>2</sub> N <sub>7</sub>
			-3.07	C <sub>21</sub> H <sub>34</sub> <sup>2</sup> H <sub>8</sub> O <sub>2</sub> N <sub>7</sub>
			4.09	C <sub>21</sub> H <sub>30</sub> <sup>2</sup> H <sub>10</sub> O <sub>2</sub> N <sub>7</sub>

NL: 1.00E8  
 Base Peak m/z=  
 432.38496-432.38928 F:  
 FTMS + p ESI Full ms  
 [100.00-1500.00] MS  
 Egrestis\_HDX

NL: 4.42E7  
 Base Peak m/z=  
 217.19952-217.20170 F:  
 FTMS + p ESI Full ms  
 [100.00-1500.00] MS  
 Egrestis\_HDX

Egrestis\_HDX #472 RT: 3.01 AV: 1 NL: 9.48E7  
 T: FTMS + p ESI Full ms [100.00-1500.00]



Egrestis\_HDX #472 RT: 3.01 AV: 1 NL: 9.48E7  
 T: FTMS + p ESI Full ms [100.00-1500.00]

