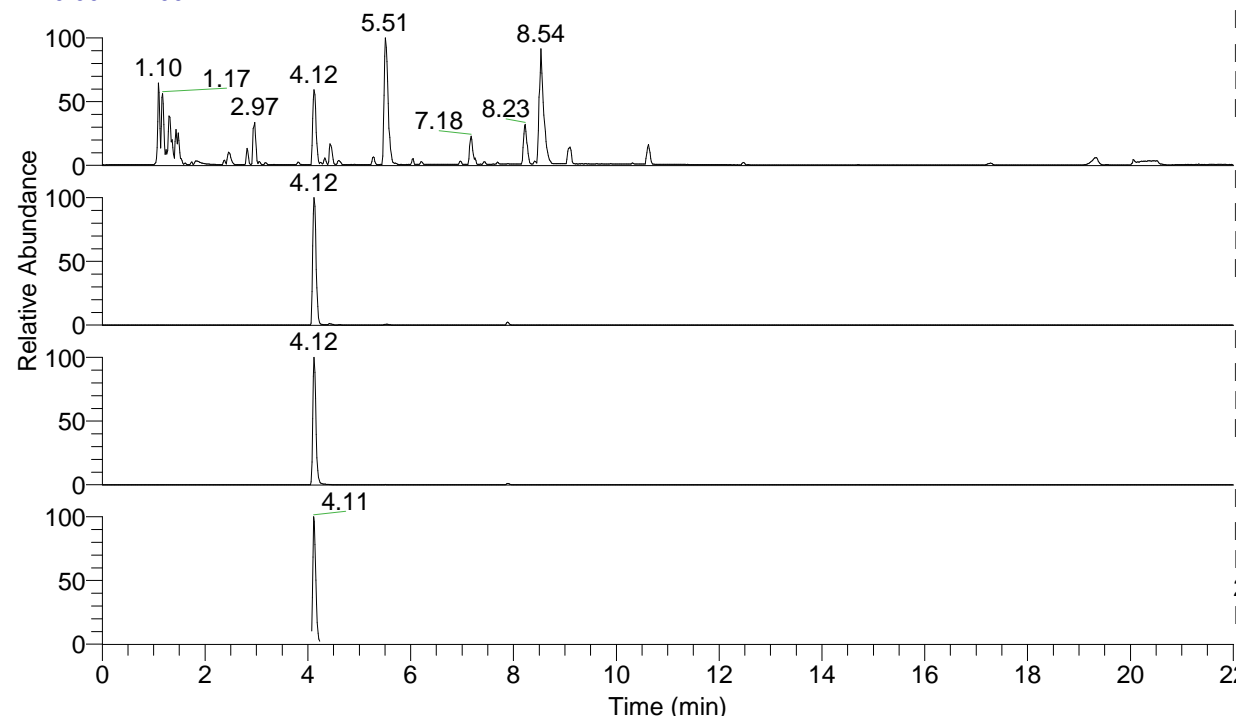


RT: 0.00 - 22.00



NL: 8.71E7
 Base Peak m/z= 100.00000-1500.00000 F:
 FTMS + p ESI Full ms [100.00-1500.00]
 MS Eagrestis

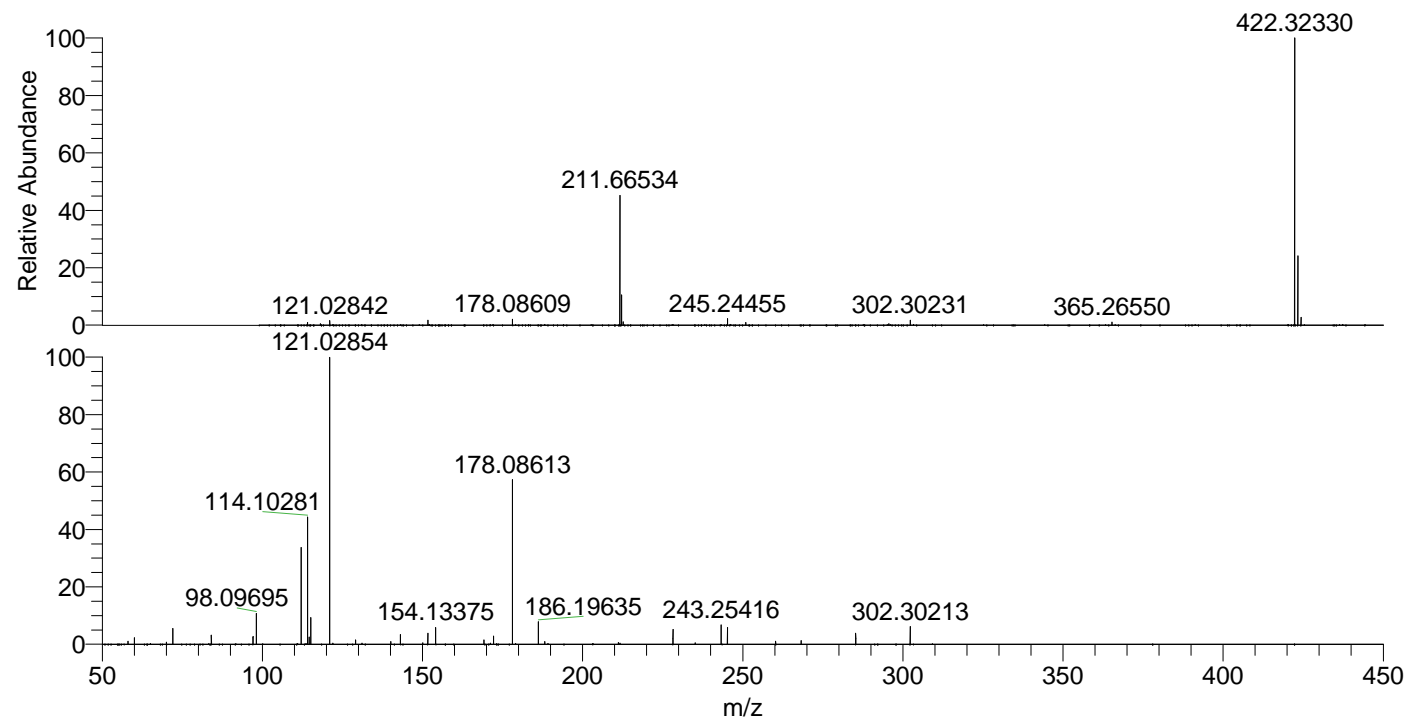
NL: 5.17E7
 Base Peak m/z= 422.32013-422.32857 F:
 FTMS + p ESI Full ms [100.00-1500.00]
 MS Eagrestis

NL: 2.39E7
 Base Peak m/z= 211.66397-211.66821 F:
 FTMS + p ESI Full ms [100.00-1500.00]
 MS Eagrestis

NL: 5.30E6
 Base Peak m/z= 50.00000-1500.00000 F:
 FTMS + p ESI d Full ms2
 211.67@hcd35.00 [50.00-450.00] MS
 Eagrestis

Eagrestis#1642-1677 RT: 4.09-4.17 AV: 7
 F: FTMS + p ESI d Full ms2 211.67@h ...
 m/z= 50.00000-1000.00000

m/z	Intensity	Relative
58.06589	33767.4	1.04
60.05641	74775.4	2.29
70.06584	22317.2	0.68
72.08150	178510.8	5.47
84.08136	103146.1	3.16
97.07654	88018.5	2.70
98.09695	346957.1	10.64
112.11242	1078950.4	33.08
114.10281	1417690.6	43.47
114.61300	78282.9	2.40
115.12327	299746.8	9.19
121.02854	3261421.8	100.00
129.13870	50511.9	1.55
140.11825	29757.3	0.91
143.14159	110852.8	3.40
151.65490	123783.1	3.80
154.13375	187147.9	5.74
169.16974	47019.0	1.44
172.18073	91759.4	2.81
178.08613	1827777.6	56.04
186.19635	249696.2	7.66
188.18662	31232.6	0.96
211.19191	19440.5	0.60
228.21788	165788.5	5.08
243.25416	216971.5	6.65
245.24456	186774.7	5.73
260.28073	32681.7	1.00
268.24926	42913.8	1.32
285.27549	122491.7	3.76
302.30213	200005.7	6.13



NL: 5.00E7
 Eagrestis#1657 RT: 4.12
 AV: 1 T: FTMS + p ESI
 Full ms [100.00-1500.00]

NL: 3.19E6
 Eagrestis#1639-1681 RT:
 4.09-4.17 AV: 7 F: FTMS
 + p ESI d Full ms2
 211.67@hcd35.00
 [50.00-450.00]