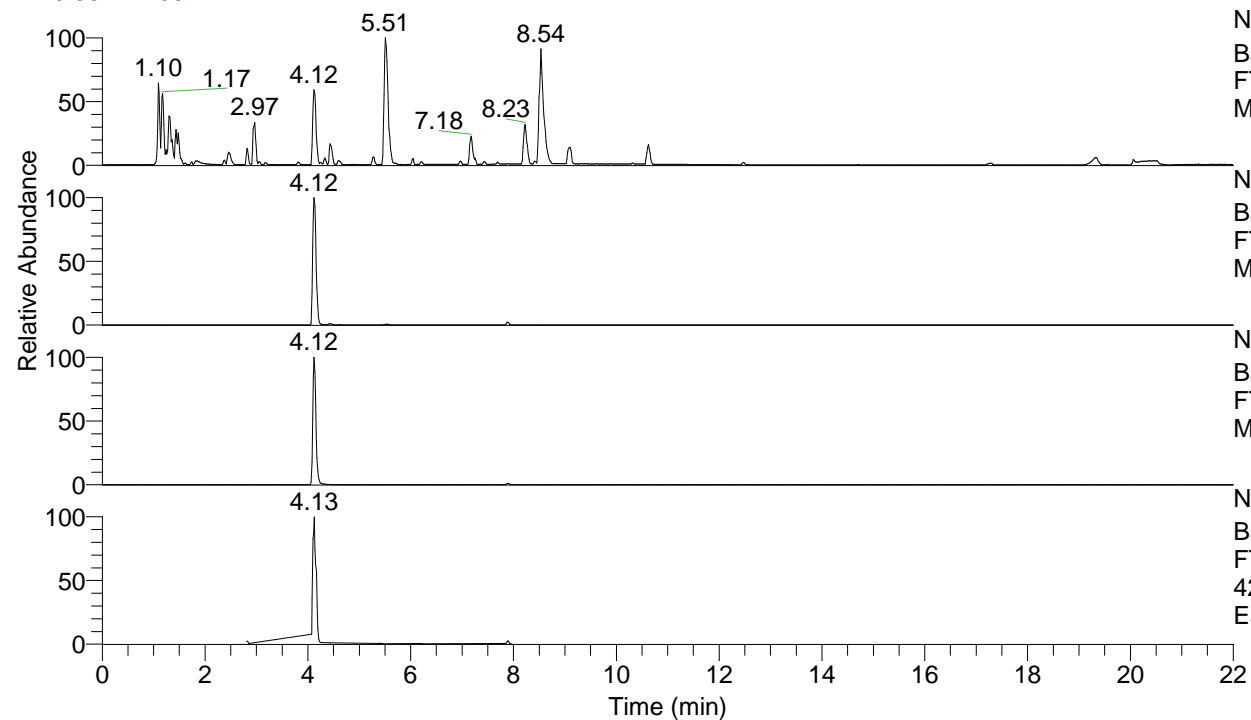


RT: 0.00 - 22.00



NL: 8.71E7
 Base Peak m/z= 100.00000-1500.00000 F:
 FTMS + p ESI Full ms [100.00-1500.00]
 MS Eagrestis

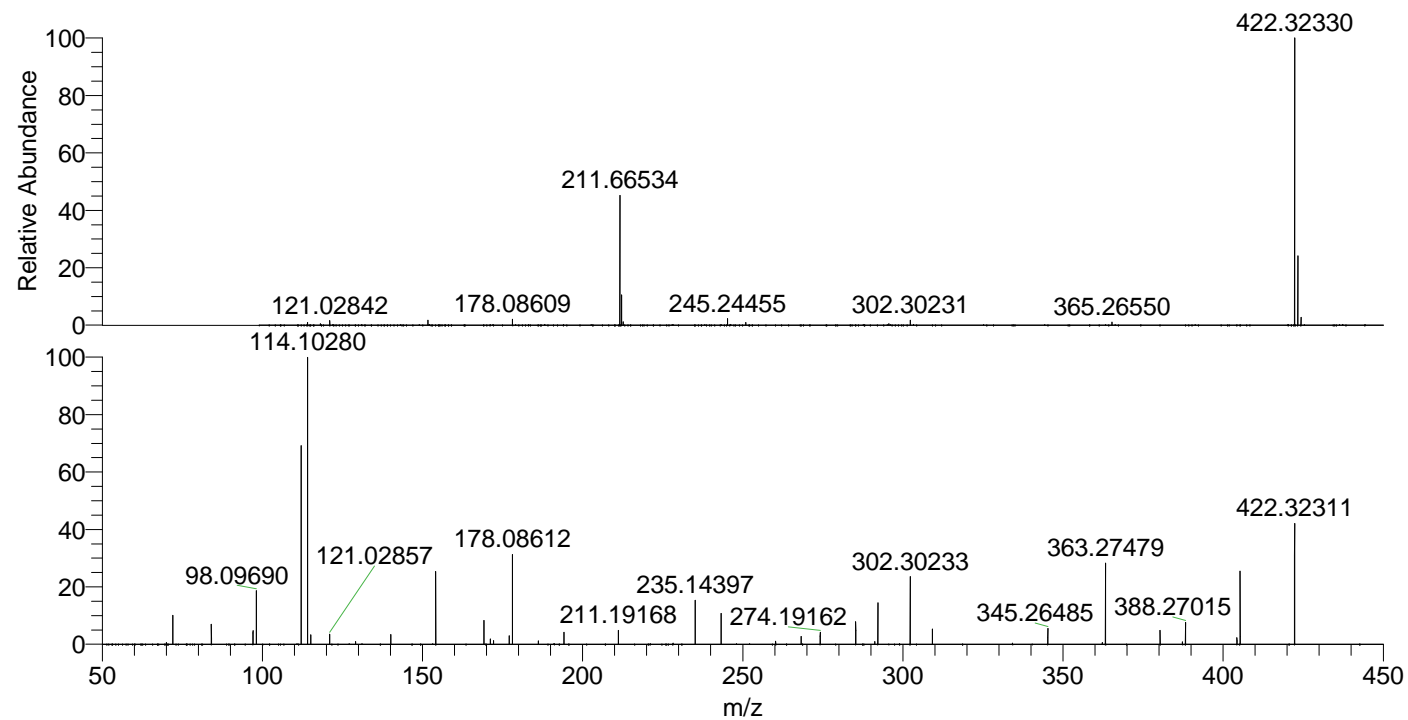
NL: 5.17E7
 Base Peak m/z= 422.32013-422.32857 F:
 FTMS + p ESI Full ms [100.00-1500.00]
 MS Eagrestis

NL: 2.39E7
 Base Peak m/z= 211.66397-211.66821 F:
 FTMS + p ESI Full ms [100.00-1500.00]
 MS Eagrestis

NL: 6.55E6
 Base Peak m/z= 50.00000-1500.00000 F:
 FTMS + p ESI d Full ms2
 422.31@hcd35.00 [50.00-450.00] MS
 Eagrestis

Eagrestis#1636-1682 RT: 4.07-4.18 AV: 9
 F: FTMS + p ESI d Full ms2 422.31@h ...
 m/z= 50.00000-1000.00000

m/z	Intensity	Relative
70.06588	22099.9	0.61
72.08149	364075.7	9.99
84.08140	257479.1	7.07
97.07646	172847.6	4.74
98.09690	680831.3	18.69
112.11240	2496138.8	68.51
114.10280	3643686.0	100.00
115.12328	119416.6	3.28
121.02857	132878.4	3.65
129.13870	33541.8	0.92
140.11811	128302.9	3.52
154.13373	915134.3	25.12
169.16974	302987.1	8.32
171.16052	68771.7	1.89
172.18090	46745.9	1.28
177.10246	106819.9	2.93
178.08612	1133956.9	31.12
186.19638	41406.8	1.14
194.16528	149757.2	4.11
211.19168	177142.3	4.86
235.14397	551975.1	15.15
243.25399	394118.4	10.82
260.27989	39664.0	1.09
268.24953	98431.8	2.70
274.19162	154401.7	4.24
285.27561	289503.1	7.95
291.21764	34971.8	0.96
292.20166	544321.0	14.94
302.30233	878159.2	24.10
309.22818	191391.3	5.25
345.26485	198586.7	5.45
362.29111	23551.8	0.65
363.27479	1040334.6	28.55
380.30153	176529.0	4.84
387.28647	31838.6	0.87
388.27015	273954.9	7.52
404.31276	80839.1	2.22
405.29682	956845.3	26.26
422.32311	1527156.9	41.91



NL: 5.00E7
 Eagrestis#1657 RT: 4.12
 AV: 1 T: FTMS + p ESI
 Full ms [100.00-1500.00]

NL: 3.61E6
 Eagrestis#1636-1685 RT:
 4.07-4.18 AV: 9 F: FTMS
 + p ESI d Full ms2
 422.31@hcd35.00
 [50.00-450.00]