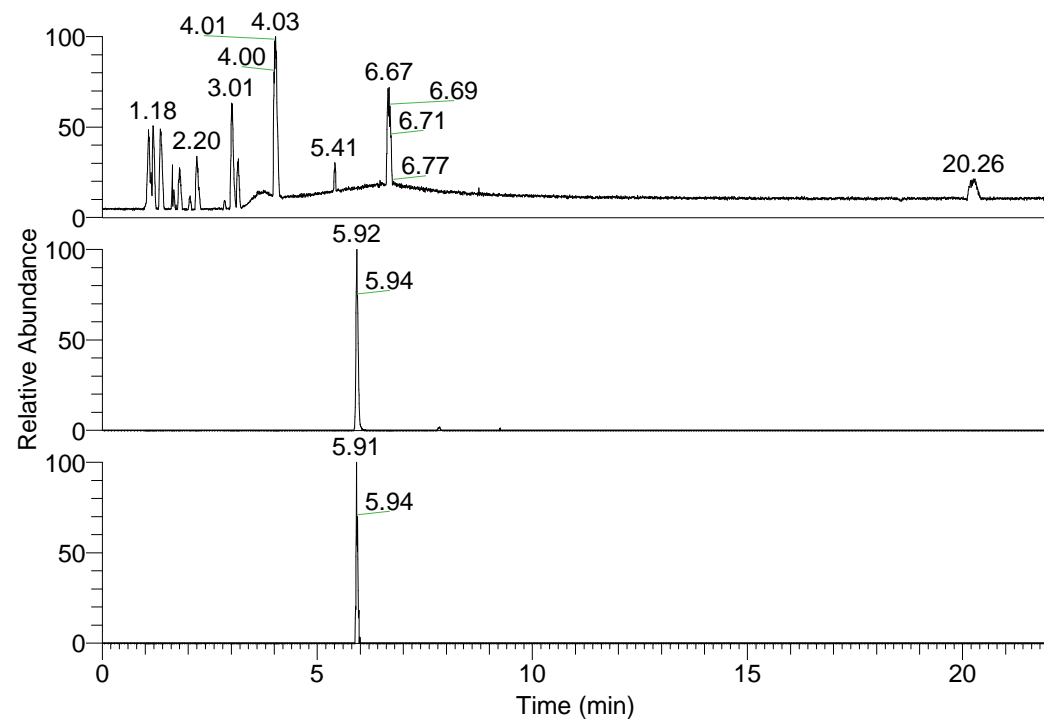


RT: 0.00 - 22.01



NL: 1.58E8
 Base Peak m/z=
 100.00000-1500.00000 F:
 FTMS + p ESI Full ms
 [100.00-1500.00] MS
 Egrestis_HDX

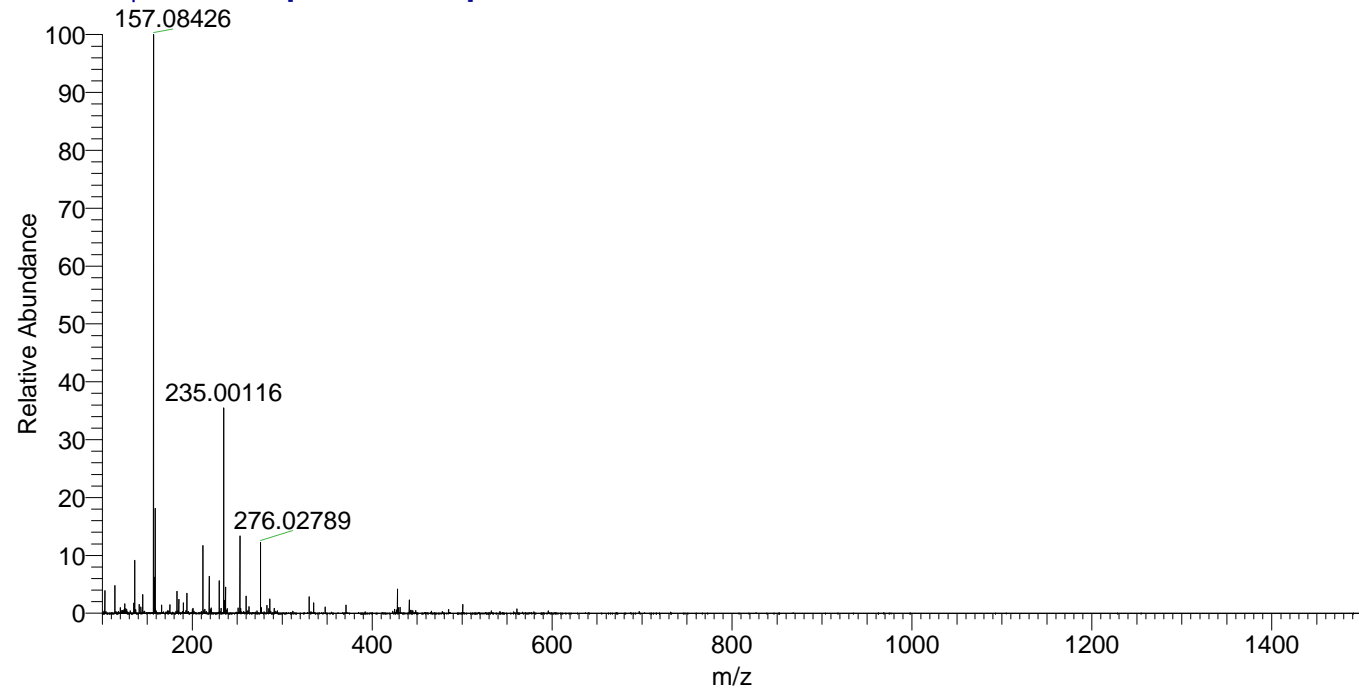
NL: 1.09E6
 Base Peak m/z=
 428.35368-428.35796 F:
 FTMS + p ESI Full ms
 [100.00-1500.00] MS
 Egrestis_HDX

NL: 9.82E4
 Base Peak m/z=
 215.18388-215.18604 F:
 FTMS + p ESI Full ms
 [100.00-1500.00] MS
 Egrestis_HDX

Egrestis_HDX#949 RT: 5.92
 T: FTMS + p ESI Full ms [100.00-1500.00]
 m/z= 428.00000-429.00000

m/z	Intensity	Relative	Delta (ppm)	Composition
428.35721	1089280.8	100.00	0.92	C ₂₁ H ₂₈ ² H ₉ O ₂ N ₇
			-2.70	C ₂₁ H ₃₀ ² H ₈ O ₂ N ₇
			4.53	C ₂₁ H ₂₆ ² H ₁₀ O ₂ N ₇

Egrestis_HDX #949 RT: 5.92 AV: 1 NL: 2.55E7
 T: FTMS + p ESI Full ms [100.00-1500.00]



Egrestis_HDX #949 RT: 5.92 AV: 1 NL: 1.07E6
 T: FTMS + p ESI Full ms [100.00-1500.00]

