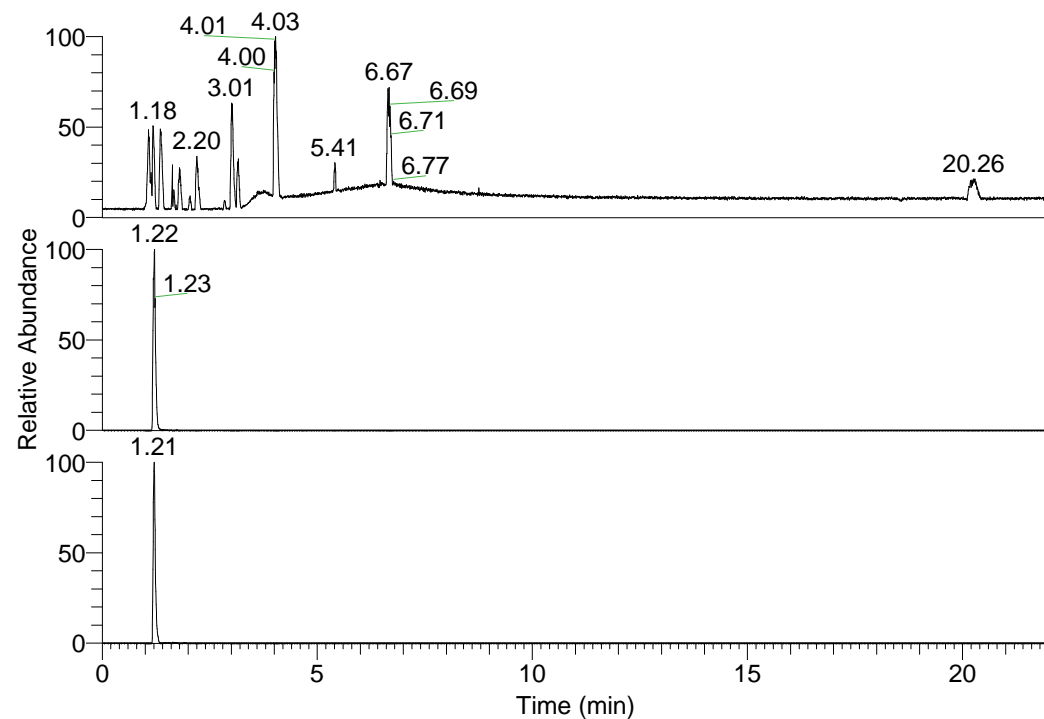


RT: 0.00 - 22.01



NL: 1.58E8
 Base Peak m/z=
 100.00000-1500.00000 F:
 FTMS + p ESI Full ms
 [100.00-1500.00] MS
 Egrestis_HDX

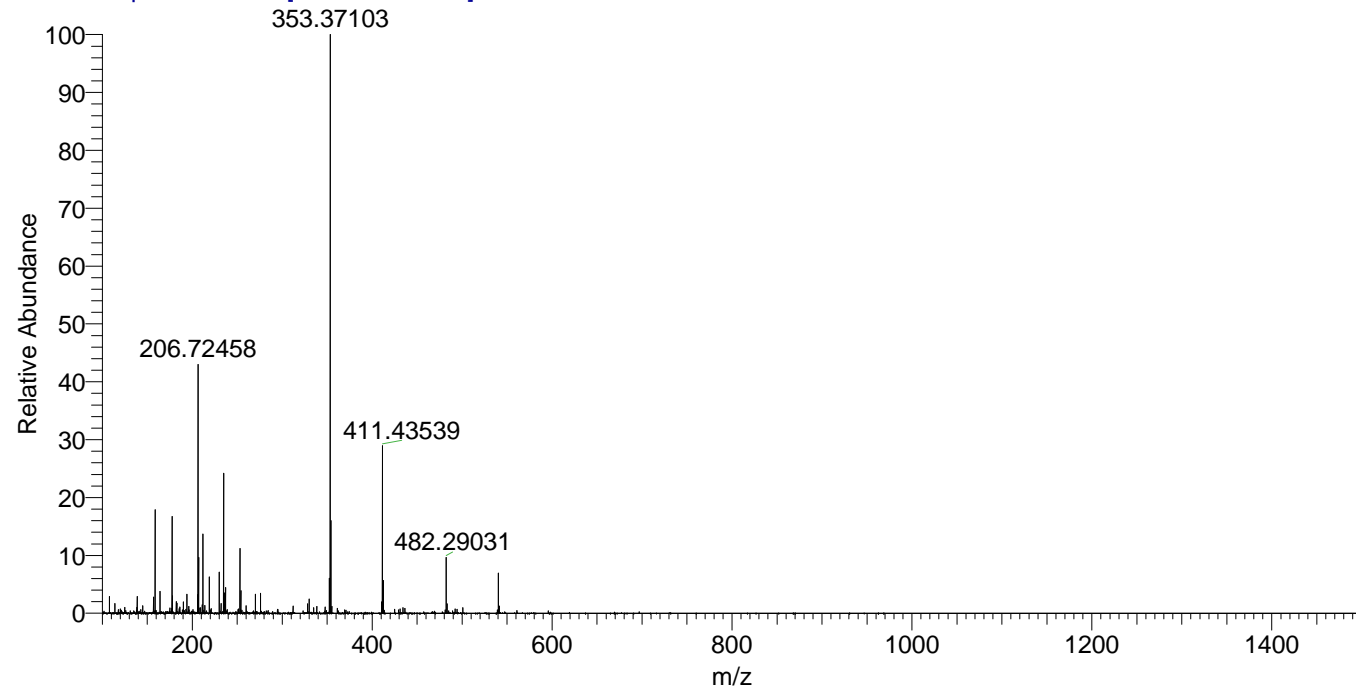
NL: 1.27E7
 Base Peak m/z=
 411.43234-411.43646 F:
 FTMS + p ESI Full ms
 [100.00-1500.00] MS
 Egrestis_HDX

NL: 1.97E7
 Base Peak m/z=
 206.72322-206.72528 F:
 FTMS + p ESI Full ms
 [100.00-1500.00] MS
 Egrestis_HDX

Egrestis_HDX#188 RT: 1.22
 T: FTMS + p ESI Full ms [100.00-1500.00]
 m/z= 411.00000-412.00000

m/z	Intensity	Relative	Delta (ppm)	Composition
411.43539	8651551.0	100.00	-0.01	C ₁₉ H ₃₇ ² H ₉ ON ₈
			3.75	C ₁₉ H ₃₅ ² H ₁₀ ON ₈
			-3.78	C ₁₉ H ₃₉ ² H ₈ ON ₈

Egrestis_HDX #188 RT: 1.22 AV: 1 NL: 2.99E7
 T: FTMS + p ESI Full ms [100.00-1500.00]



Egrestis_HDX #188 RT: 1.22 AV: 1 NL: 8.65E6
 T: FTMS + p ESI Full ms [100.00-1500.00]

