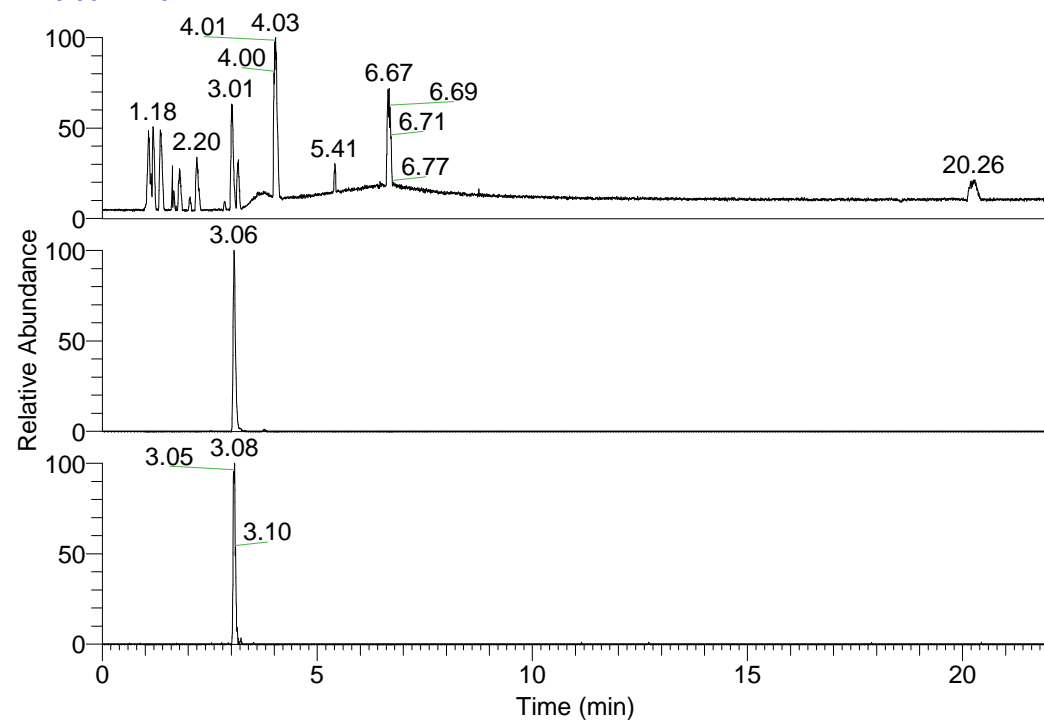


RT: 0.00 - 22.01



NL: 1.58E8
 Base Peak m/z=
 100.00000-1500.00000 F:
 FTMS + p ESI Full ms
 [100.00-1500.00] MS
 Egrestis_HDX

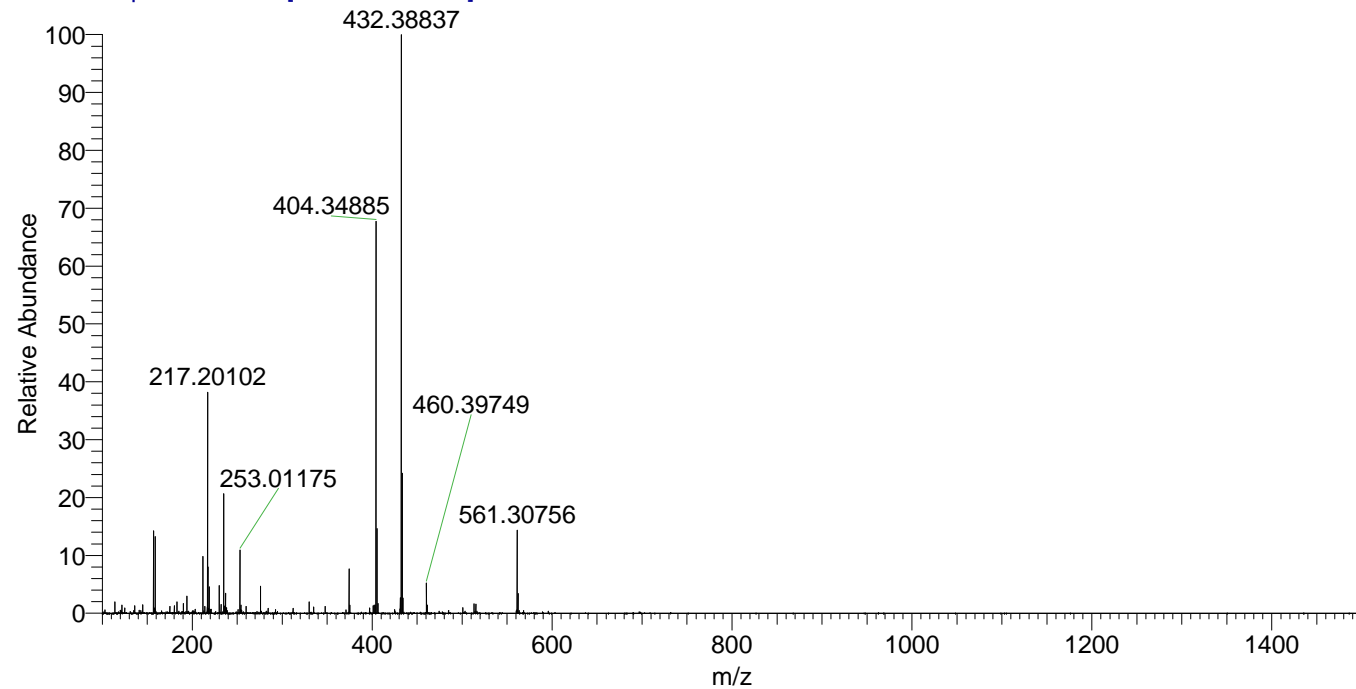
NL: 2.82E7
 Base Peak m/z=
 404.34566-404.34970 F:
 FTMS + p ESI Full ms
 [100.00-1500.00] MS
 Egrestis_HDX

NL: 3.06E5
 Base Peak m/z=
 203.17987-203.18191 F:
 FTMS + p ESI Full ms
 [100.00-1500.00] MS
 Egrestis_HDX

Egrestis_HDX#481 RT: 3.06
 T: FTMS + p ESI Full ms [100.00-1500.00]
 m/z= 404.00000-405.00000

m/z	Intensity	Relative	Delta (ppm)	Composition
404.34885	27762456.0	100.00	0.41	C ₂₀ H ₃₂ ² H ₇ O ₃ N ₅
			-3.41	C ₂₀ H ₃₄ ² H ₆ O ₃ N ₅
			4.24	C ₂₀ H ₃₀ ² H ₈ O ₃ N ₅

Egrestis_HDX #481 RT: 3.06 AV: 1 NL: 4.01E7
 T: FTMS + p ESI Full ms [100.00-1500.00]



Egrestis_HDX #481 RT: 3.06 AV: 1 NL: 2.72E7
 T: FTMS + p ESI Full ms [100.00-1500.00]

