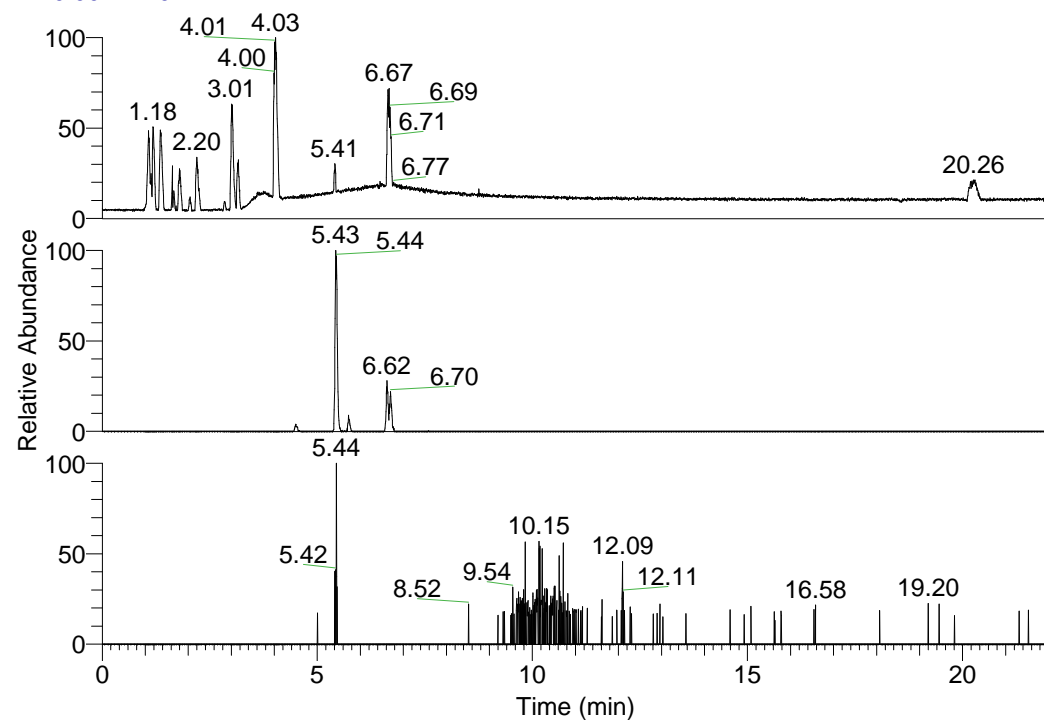


RT: 0.00 - 22.01



NL: 1.58E8
 Base Peak m/z=
 100.00000-1500.00000 F:
 FTMS + p ESI Full ms
 [100.00-1500.00] MS
 Egrestis_HDX

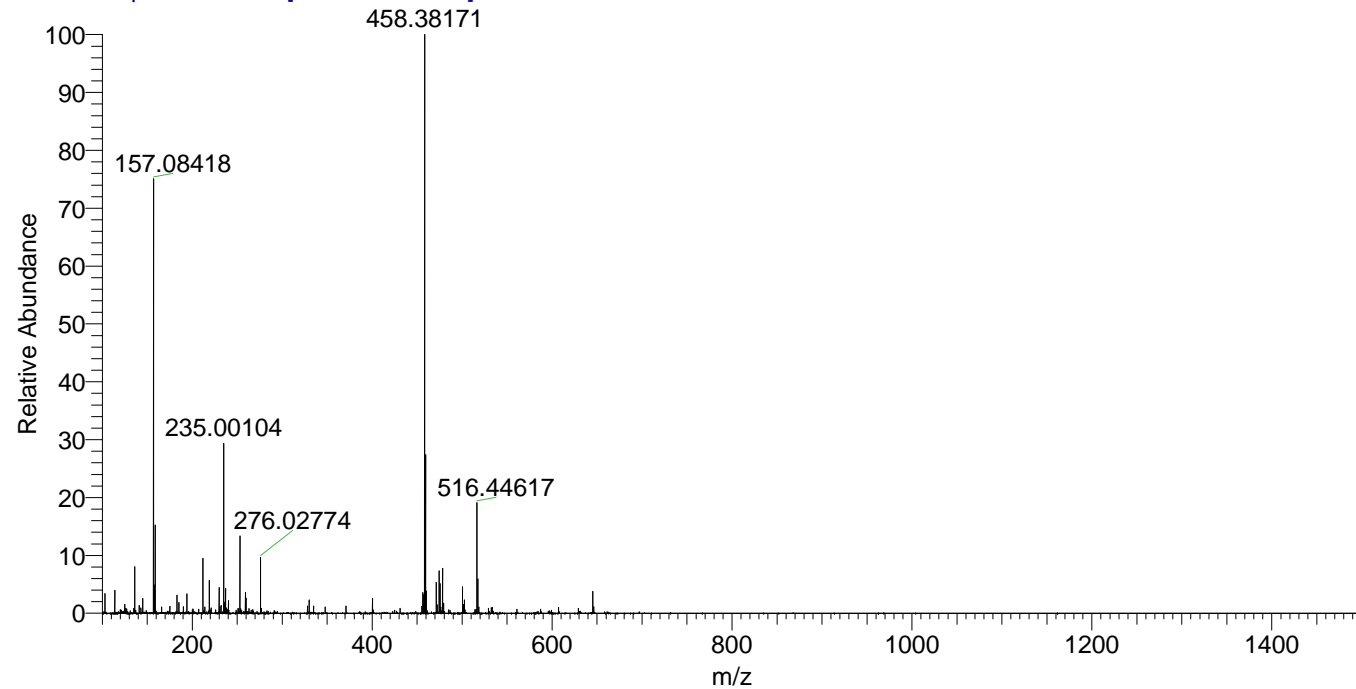
NL: 8.17E5
 Base Peak m/z=
 400.31438-400.31838 F:
 FTMS + p ESI Full ms
 [100.00-1500.00] MS
 Egrestis_HDX

NL: 1.82E4
 Base Peak m/z=
 201.16423-201.16625 F:
 FTMS + p ESI Full ms
 [100.00-1500.00] MS
 Egrestis_HDX

Egrestis_HDX#869 RT: 5.43
 T: FTMS + p ESI Full ms [100.00-1500.00]
 m/z= 400.00000-401.00000

m/z	Intensity	Relative	Delta (ppm)	Composition
400.31741	817096.0	100.00	0.09	C ₂₀ H ₂₈ ² H ₇ O ₃ N ₅
			-3.78	C ₂₀ H ₃₀ ² H ₆ O ₃ N ₅
			3.95	C ₂₀ H ₂₆ ² H ₈ O ₃ N ₅

Egrestis_HDX #869 RT: 5.43 AV: 1 NL: 3.12E7
 T: FTMS + p ESI Full ms [100.00-1500.00]



Egrestis_HDX #869 RT: 5.43 AV: 1 NL: 8.00E5
 T: FTMS + p ESI Full ms [100.00-1500.00]

