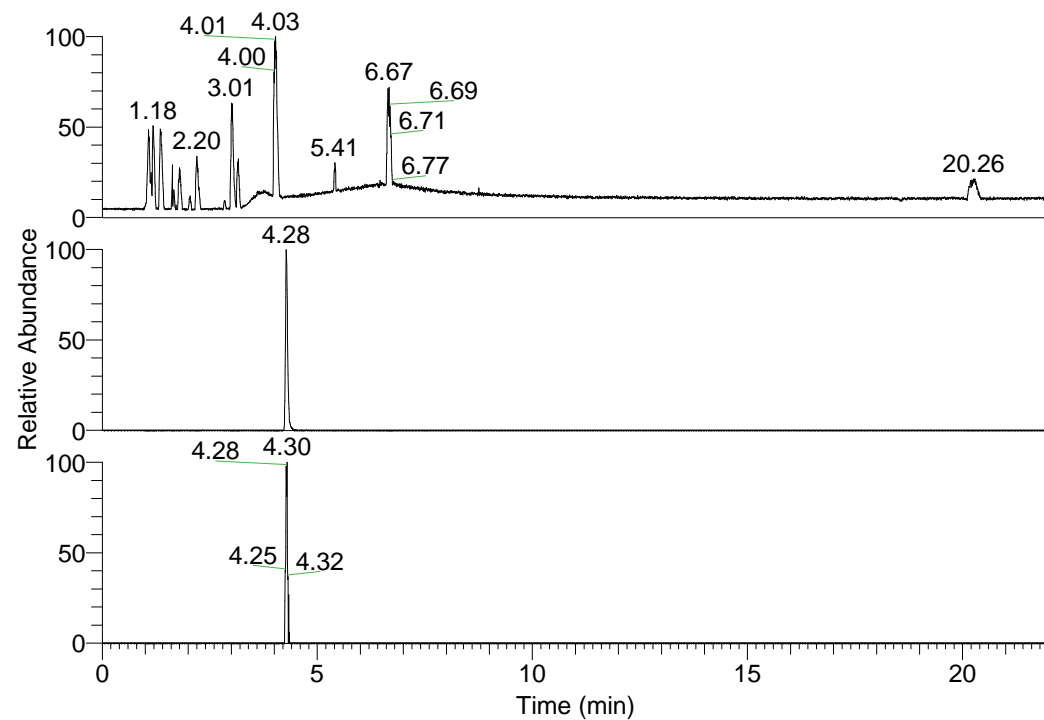


RT: 0.00 - 22.01



NL: 1.58E8
 Base Peak m/z=
 100.00000-1500.00000 F:
 FTMS + p ESI Full ms
 [100.00-1500.00] MS
 Egrestis_HDX

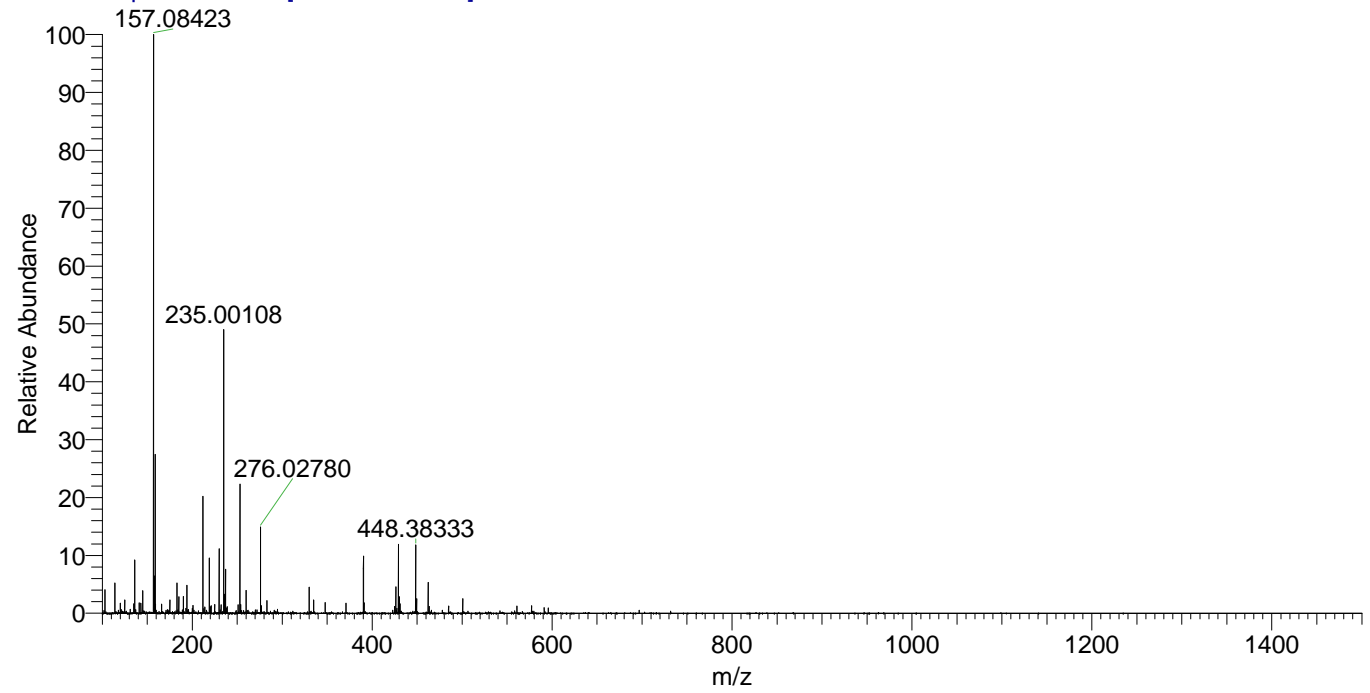
NL: 1.76E6
 Base Peak m/z=
 390.31596-390.31986 F:
 FTMS + p ESI Full ms
 [100.00-1500.00] MS
 Egrestis_HDX

NL: 4.63E4
 Base Peak m/z=
 196.16502-196.16698 F:
 FTMS + p ESI Full ms
 [100.00-1500.00] MS
 Egrestis_HDX

Egrestis_HDX#682 RT: 4.28
 T: FTMS + p ESI Full ms [100.00-1500.00]
 m/z= 390.00000-391.00000

m/z	Intensity	Relative	Delta (ppm)	Composition
390.31882	1762174.0	100.00	-0.22	C ₁₈ H ₂₆ ² H ₈ O ₃ N ₆
			3.74	C ₁₈ H ₂₄ ² H ₉ O ₃ N ₆
			-4.19	C ₁₈ H ₂₈ ² H ₇ O ₃ N ₆

Egrestis_HDX #682 RT: 4.28 AV: 1 NL: 1.79E7
 T: FTMS + p ESI Full ms [100.00-1500.00]



Egrestis_HDX #682 RT: 4.28 AV: 1 NL: 1.76E6
 T: FTMS + p ESI Full ms [100.00-1500.00]

