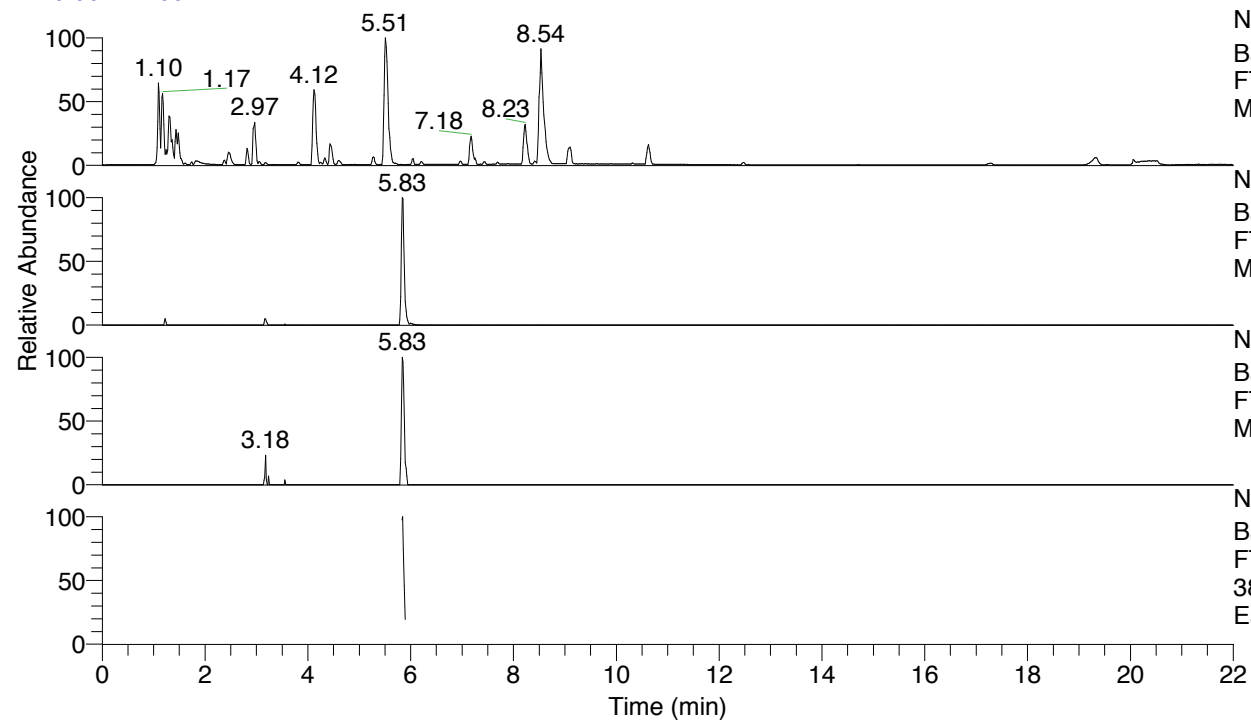


RT: 0.00 - 22.00



NL: 8.71E7
 Base Peak m/z= 100.00000-1500.00000 F:
 FTMS + p ESI Full ms [100.00-1500.00]
 MS Eagrestis

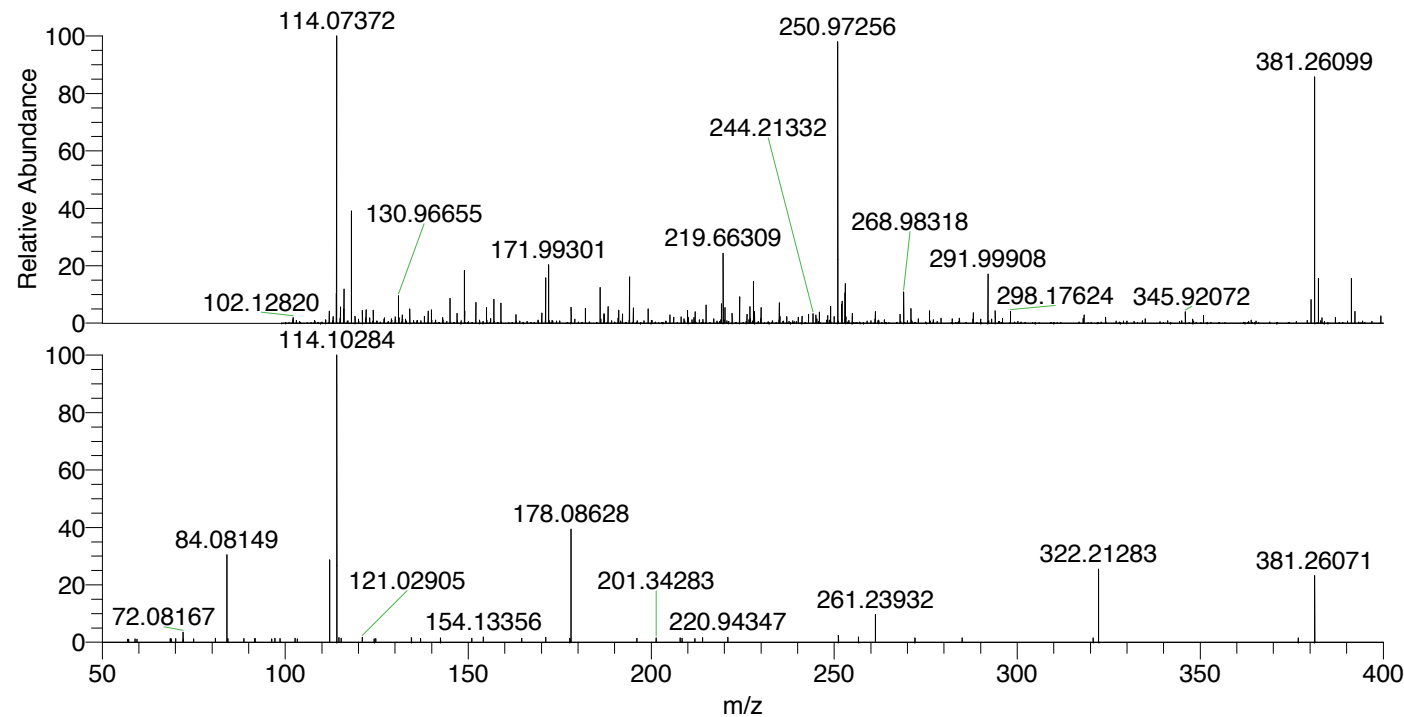
NL: 5.27E5
 Base Peak m/z= 381.25760-381.26522 F:
 FTMS + p ESI Full ms [100.00-1500.00]
 MS Eagrestis

NL: 2.81E4
 Base Peak m/z= 191.13271-191.13653 F:
 FTMS + p ESI Full ms [100.00-1500.00]
 MS Eagrestis

NL: 8.99E4
 Base Peak m/z= 50.00000-1500.00000 F:
 FTMS + p ESI d Full ms2
 381.26@hcd35.00 [50.00-405.00] MS
 Eagrestis

Eagrestis#2345-2370 RT: 5.83-5.89 AV:
 F: FTMS + p ESI d Full ms2 381.26 ...
 m/z= 50.00000-1000.00000

m/z	Intensity	Relative
58.94553	620.7	1.11
64.17689	626.8	1.12
68.47813	668.3	1.19
68.60735	658.0	1.17
70.06613	658.6	1.18
72.08166	1851.7	3.30
75.00727	635.2	1.13
80.93908	723.8	1.29
84.08150	17520.5	31.26
84.33094	660.8	1.18
85.52642	700.1	1.25
88.70004	709.7	1.27
91.66269	673.2	1.20
91.75256	697.0	1.24
96.29425	652.7	1.16
97.17351	736.0	1.31
98.58180	673.3	1.20
102.69394	734.0	1.31
103.29101	645.5	1.15
108.80285	668.9	1.19
109.41922	717.5	1.28
112.11241	15131.8	27.00
114.10288	56042.6	100.00
114.65863	849.1	1.52
115.26441	709.5	1.27
121.02905	886.2	1.58
124.33085	645.8	1.15
124.71437	703.0	1.25
134.48248	829.1	1.48
136.94532	693.0	1.24
142.43691	794.6	1.42
150.97385	737.8	1.32
154.13356	991.5	1.77
158.22963	684.1	1.22
164.62019	761.1	1.36
171.16118	913.3	1.63
177.77156	765.3	1.37
178.08627	21458.5	38.29
196.06657	727.9	1.30
201.34284	765.7	1.37
207.89189	776.4	1.39
208.42837	729.4	1.30
211.94641	688.0	1.23
214.02577	863.7	1.54
220.94355	933.1	1.66
251.14033	1297.5	2.32
256.63971	1004.3	1.79
261.23945	4972.3	8.87
272.04767	797.0	1.42
284.95612	777.1	1.39
294.44636	764.5	1.36
320.75117	797.7	1.42
322.21309	13539.8	24.16
376.79124	797.6	1.42
381.26048	11977.9	21.37



NL: 6.08E5
 Eagrestis#2347 RT: 5.83
 AV: 1 T: FTMS + p ESI
 Full ms [100.00-1500.00]

NL: 6.56E4
 Eagrestis#2343-2367 RT:
 5.83-5.87 AV: 4 F: FTMS
 + p ESI d Full ms2
 381.26@hcd35.00
 [50.00-405.00]

Egrestis#2345-2370 RT: 5.83-5.89 AV: 5

F: FTMS + p ESI d Full ms2 381.26@hcd35.00 [50.00-405.00]

m/z= 50.00000-1000.00000

m/z	Intensity	Relative
52.58394	533.3	0.95
56.92568	558.0	1.00
57.17508	588.8	1.05
58.94553	620.7	1.11
59.49790	562.8	1.00
64.17689	626.8	1.12
68.47813	668.3	1.19
68.60735	658.0	1.17
68.88344	613.7	1.10
70.06613	658.6	1.18
72.08166	1851.7	3.30
72.15534	599.0	1.07
75.00727	635.2	1.13
80.93908	723.8	1.29
84.08150	17520.5	31.26
84.33094	660.8	1.18
85.52642	700.1	1.25
88.70004	709.7	1.27
91.66269	673.2	1.20
91.75256	697.0	1.24
96.29425	652.7	1.16
97.17351	736.0	1.31
98.58180	673.3	1.20
102.69394	734.0	1.31
103.29101	645.5	1.15
106.24992	614.1	1.10
108.80285	668.9	1.19
109.41922	717.5	1.28
112.11241	15131.8	27.00
114.10288	56042.6	100.00
114.65863	849.1	1.52
115.26441	709.5	1.27
121.02905	886.2	1.58
124.33085	645.8	1.15
124.71437	703.0	1.25
134.48248	829.1	1.48
136.94532	693.0	1.24
142.43691	794.6	1.42
150.97385	737.8	1.32

Eagrestis#2345-2370 RT: 5.83-5.89 AV: 5

F: FTMS + p ESI d Full ms2 381.26@hcd35.00 [50.00-405.00]

m/z= 50.00000-1000.00000

m/z	Intensity	Relative
154.13356	991.5	1.77
158.22963	684.1	1.22
164.62019	761.1	1.36
171.16118	913.3	1.63
177.77156	765.3	1.37
178.08627	21458.5	38.29
196.06657	727.9	1.30
201.34284	765.7	1.37
207.89189	776.4	1.39
208.42837	729.4	1.30
211.94641	688.0	1.23
214.02577	863.7	1.54
220.94355	933.1	1.66
251.14033	1297.5	2.32
256.63971	1004.3	1.79
261.23945	4972.3	8.87
272.04767	797.0	1.42
284.95612	777.1	1.39
294.44636	764.5	1.36
320.75117	797.7	1.42
322.21309	13539.8	24.16
376.79124	797.6	1.42
381.26048	11977.9	21.37