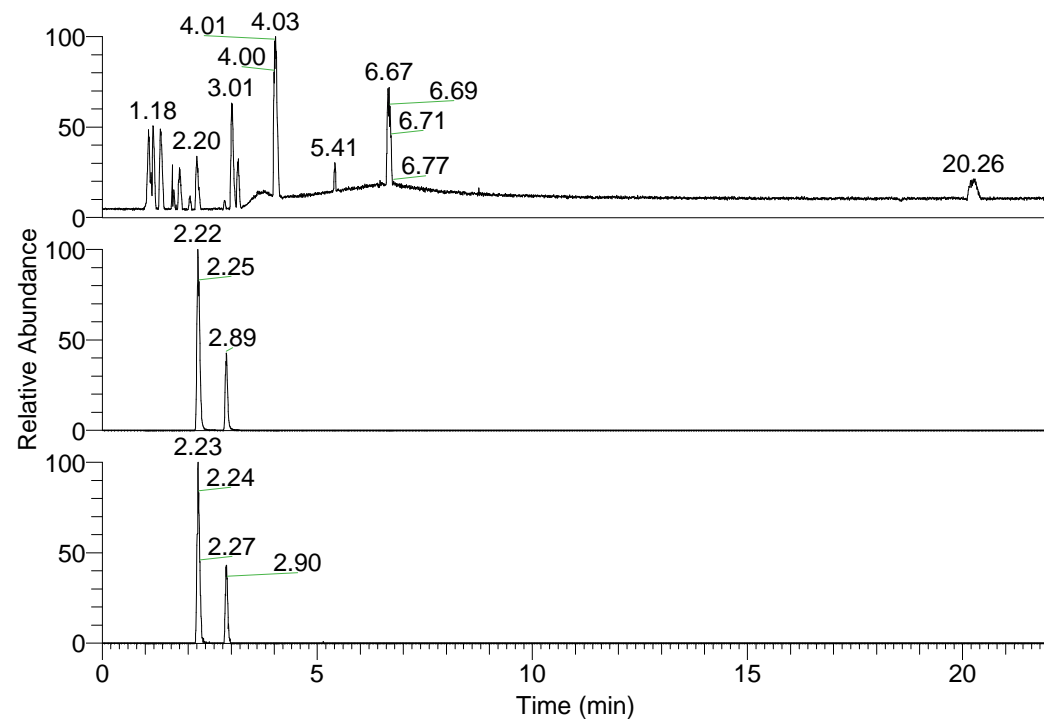


RT: 0.00 - 22.01



NL: 1.58E8  
 Base Peak m/z=  
 100.00000-1500.00000 F:  
 FTMS + p ESI Full ms  
 [100.00-1500.00] MS  
 Egrestis\_HDX

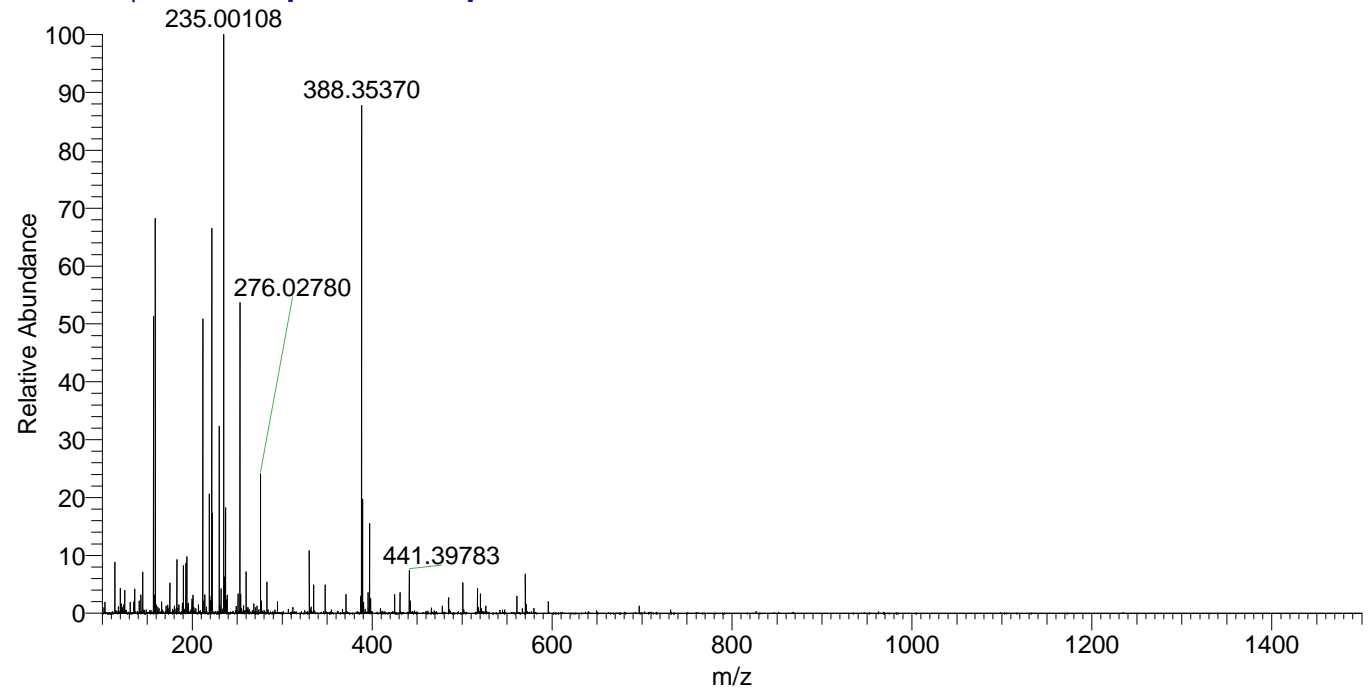
NL: 1.87E7  
 Base Peak m/z=  
 388.35083-388.35471 F:  
 FTMS + p ESI Full ms  
 [100.00-1500.00] MS  
 Egrestis\_HDX

NL: 3.24E5  
 Base Peak m/z=  
 195.18245-195.18441 F:  
 FTMS + p ESI Full ms  
 [100.00-1500.00] MS  
 Egrestis\_HDX

Egrestis\_HDX#453 RT: 2.89  
 T: FTMS + p ESI Full ms [100.00-1500.00]  
 m/z= 388.00000-389.00000

m/z	Intensity	Relative	Delta (ppm)	Composition
388.35370	7777522.0	100.00	-0.17	C <sub>20</sub> H <sub>32</sub> <sup>2</sup> H <sub>7</sub> O <sub>2</sub> N <sub>5</sub>
			3.82	C <sub>20</sub> H <sub>30</sub> <sup>2</sup> H <sub>8</sub> O <sub>2</sub> N <sub>5</sub>
			-4.16	C <sub>20</sub> H <sub>34</sub> <sup>2</sup> H <sub>6</sub> O <sub>2</sub> N <sub>5</sub>

Egrestis\_HDX #453 RT: 2.89 AV: 1 NL: 8.47E6  
 T: FTMS + p ESI Full ms [100.00-1500.00]



Egrestis\_HDX #453 RT: 2.89 AV: 1 NL: 7.43E6  
 T: FTMS + p ESI Full ms [100.00-1500.00]

