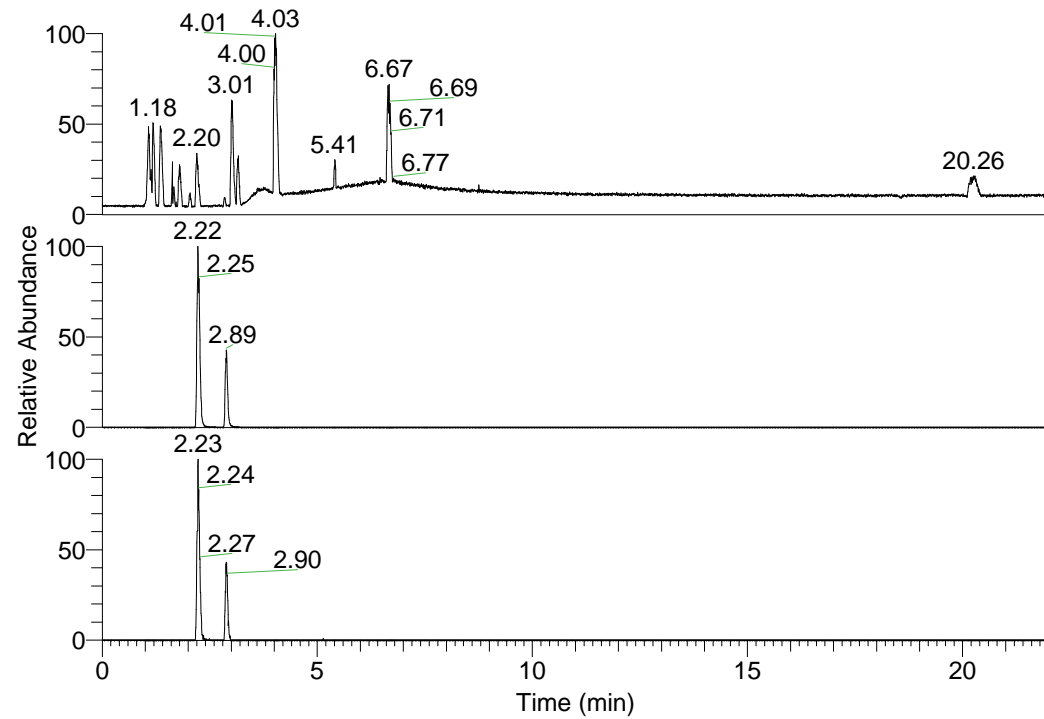


RT: 0.00 - 22.01



NL: 1.58E8
 Base Peak m/z=
 100.00000-1500.00000 F:
 FTMS + p ESI Full ms
 [100.00-1500.00] MS
 Egrestis_HDX

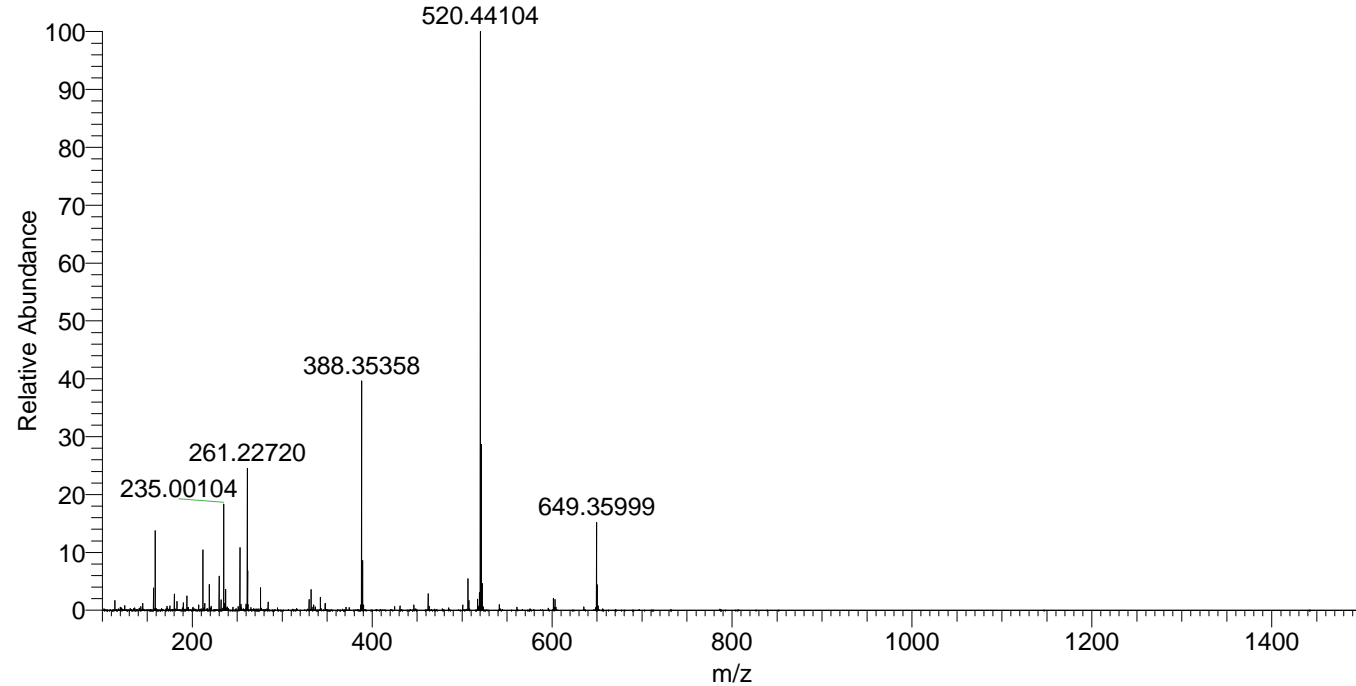
NL: 1.87E7
 Base Peak m/z=
 388.35083-388.35471 F:
 FTMS + p ESI Full ms
 [100.00-1500.00] MS
 Egrestis_HDX

NL: 3.24E5
 Base Peak m/z=
 195.18245-195.18441 F:
 FTMS + p ESI Full ms
 [100.00-1500.00] MS
 Egrestis_HDX

Egrestis_HDX#349 RT: 2.22
 T: FTMS + p ESI Full ms [100.00-1500.00]
 m/z= 388.00000-389.00000

m/z	Intensity	Relative	Delta (ppm)	Composition
388.35358	15434379.0	100.00	-0.48	C ₂₀ H ₃₂ ² H ₇ O ₂ N ₅
			3.50	C ₂₀ H ₃₀ ² H ₈ O ₂ N ₅
			-4.47	C ₂₀ H ₃₄ ² H ₆ O ₂ N ₅

Egrestis_HDX #349 RT: 2.22 AV: 1 NL: 3.82E7
 T: FTMS + p ESI Full ms [100.00-1500.00]



Egrestis_HDX #349 RT: 2.22 AV: 1 NL: 1.51E7
 T: FTMS + p ESI Full ms [100.00-1500.00]

