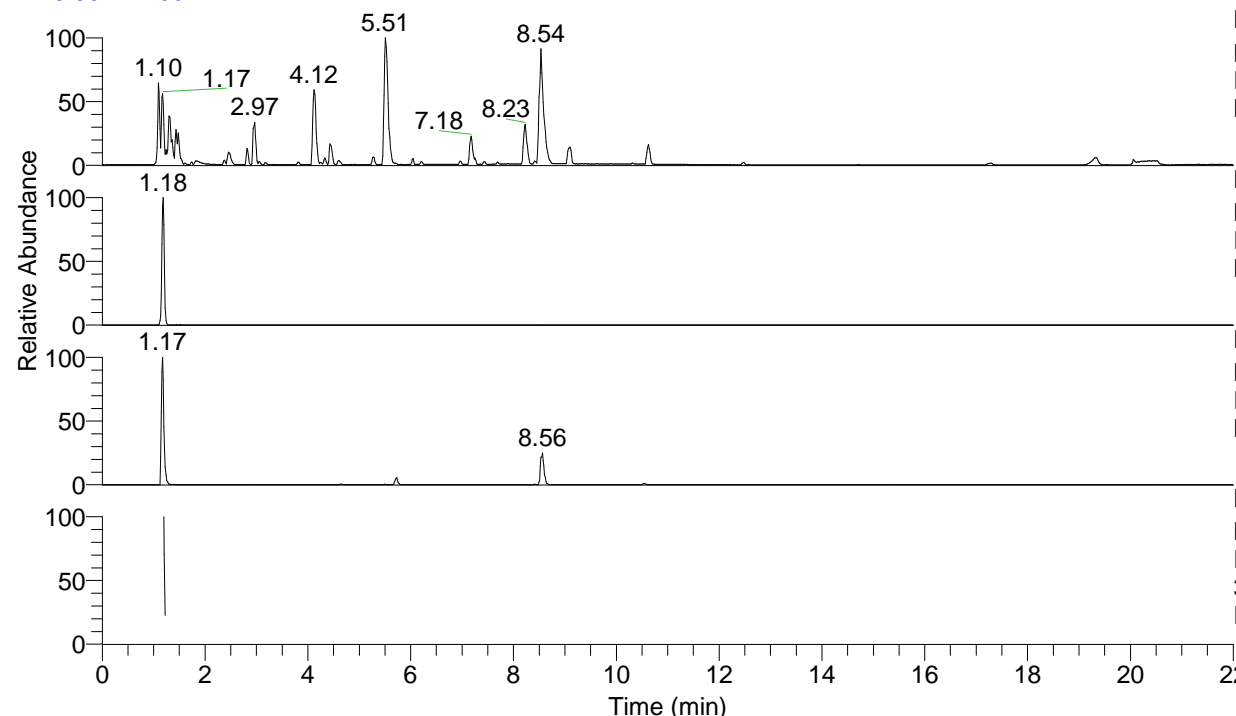


RT: 0.00 - 22.00



NL: 8.71E7
 Base Peak m/z= 100.00000-1500.00000 F:
 FTMS + p ESI Full ms [100.00-1500.00]
 MS Eagrestis

NL: 6.11E6
 Base Peak m/z= 375.35223-375.35973 F:
 FTMS + p ESI Full ms [100.00-1500.00]
 MS Eagrestis

NL: 1.45E6
 Base Peak m/z= 188.18002-188.18378 F:
 FTMS + p ESI Full ms [100.00-1500.00]
 MS Eagrestis

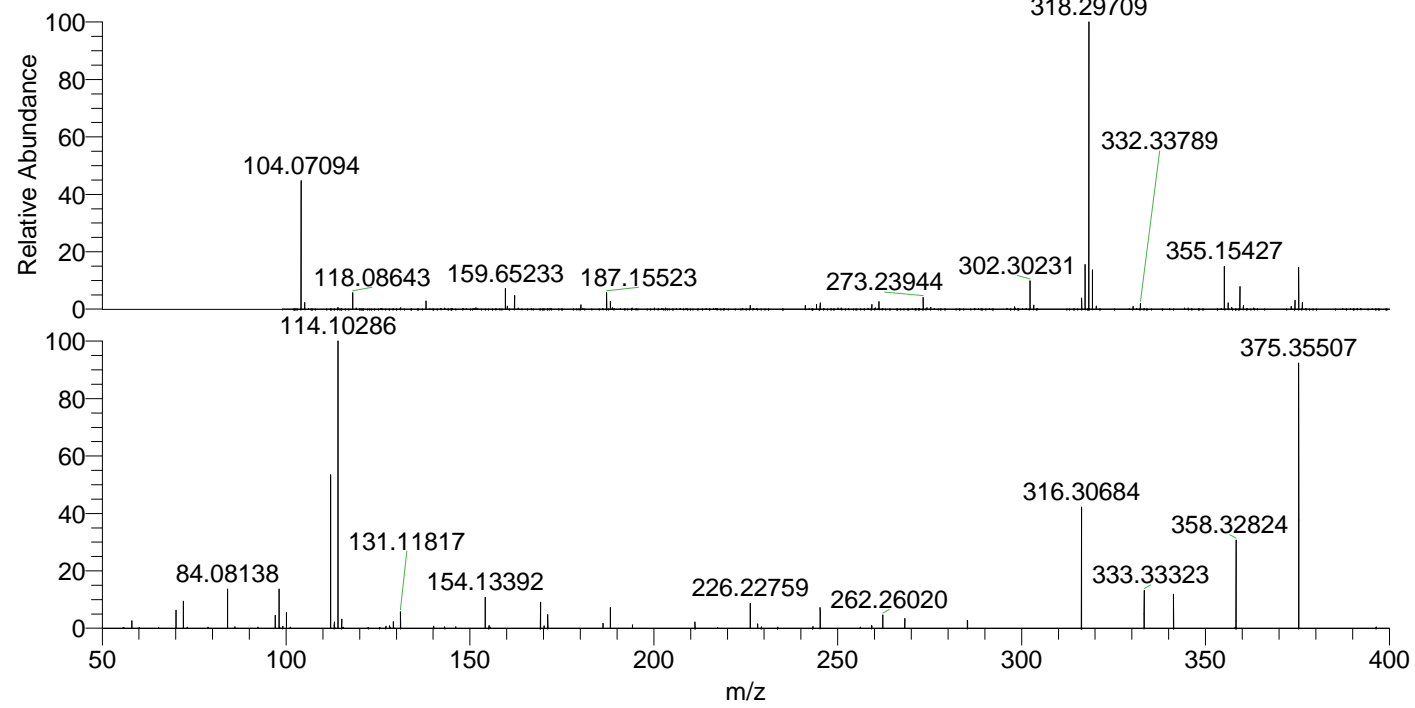
NL: 6.09E5
 Base Peak m/z= 50.00000-1500.00000 F:
 FTMS + p ESI d Full ms2
 375.35@hcd35.00 [50.00-400.00] MS
 Eagrestis

Eagrestis#486-498 RT: 1.20-1.22 AV: 3

F: FTMS + p ESI d Full ms2 375.35 ...

m/z= 50.00000-1000.00000

m/z	Intensity	Relative
58.06584	9437.1	2.60
70.06581	23081.5	6.36
72.08150	33521.1	9.24
84.08138	50290.0	13.86
86.06079	1917.6	0.53
97.07654	16061.6	4.43
98.09690	48862.2	13.47
99.09184	2331.9	0.64
100.07606	19442.2	5.36
112.08719	6231.6	1.72
112.11244	190801.2	52.59
113.10759	7924.3	2.18
114.09161	20500.0	5.65
114.10286	362838.1	100.00
115.10641	2242.8	0.62
115.12322	11518.6	3.17
127.12334	2430.8	0.67
128.10722	3158.4	0.87
129.13872	8231.3	2.27
131.11817	21064.7	5.81
140.11819	2578.0	0.71
143.12916	1876.0	0.52
154.13392	38374.9	10.58
155.15435	3601.1	0.99
169.16971	32837.5	9.05
170.16519	3054.6	0.84
171.14896	16983.3	4.68
171.16164	3899.0	1.07
186.19772	6231.5	1.72
188.17475	26548.1	7.32
194.16405	4344.1	1.20
211.19188	7568.0	2.09
226.22759	30944.5	8.53
228.21788	5640.9	1.55
229.23896	1994.2	0.55
243.25438	2126.8	0.59
245.23344	25637.8	7.07
259.24937	3640.3	1.00
262.26020	16900.8	4.66
268.24978	12053.8	3.32
285.27457	9568.0	2.64
316.30684	150882.1	41.58
333.33323	47704.6	13.15
341.30181	42750.0	11.78
358.32824	113235.4	31.21
375.35507	331921.1	91.48



NL: 4.19E7
 Eagrestis#481 RT: 1.18
 AV: 1 T: FTMS + p ESI
 Full ms [100.00-1500.00]

NL: 3.57E5
 Eagrestis#480-504 RT:
 1.20-1.22 AV: 3 F: FTMS
 + p ESI d Full ms2
 375.35@hcd35.00
 [50.00-400.00]