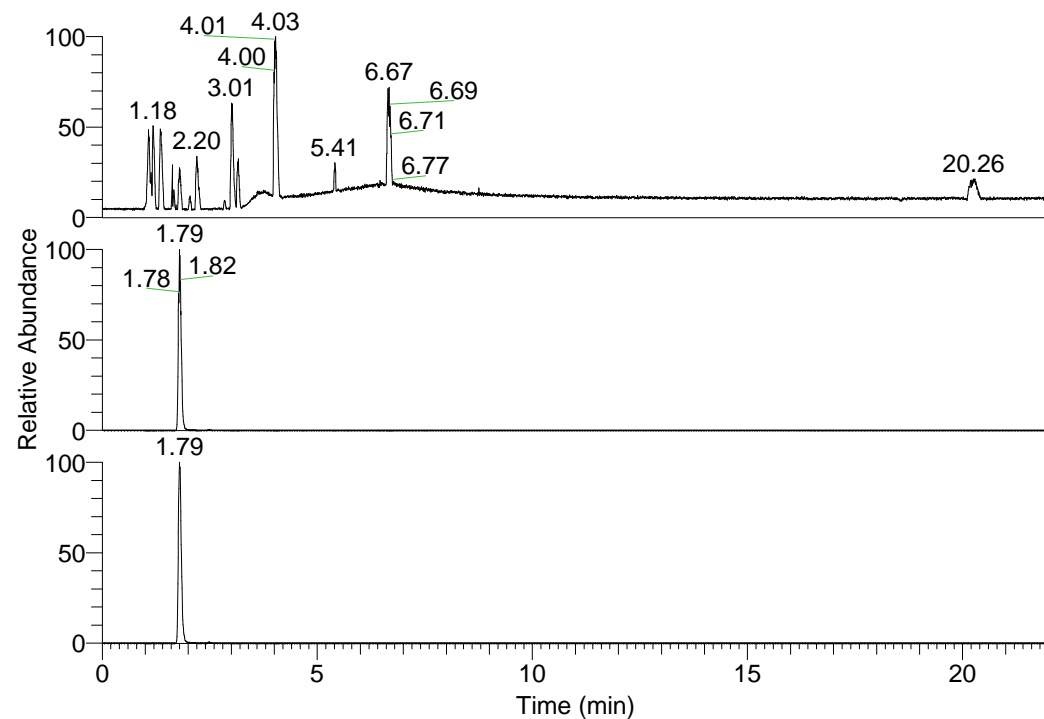


RT: 0.00 - 22.01



NL: 1.58E8  
 Base Peak m/z=  
 100.00000-1500.00000 F:  
 FTMS + p ESI Full ms  
 [100.00-1500.00] MS  
 Egrestis\_HDX

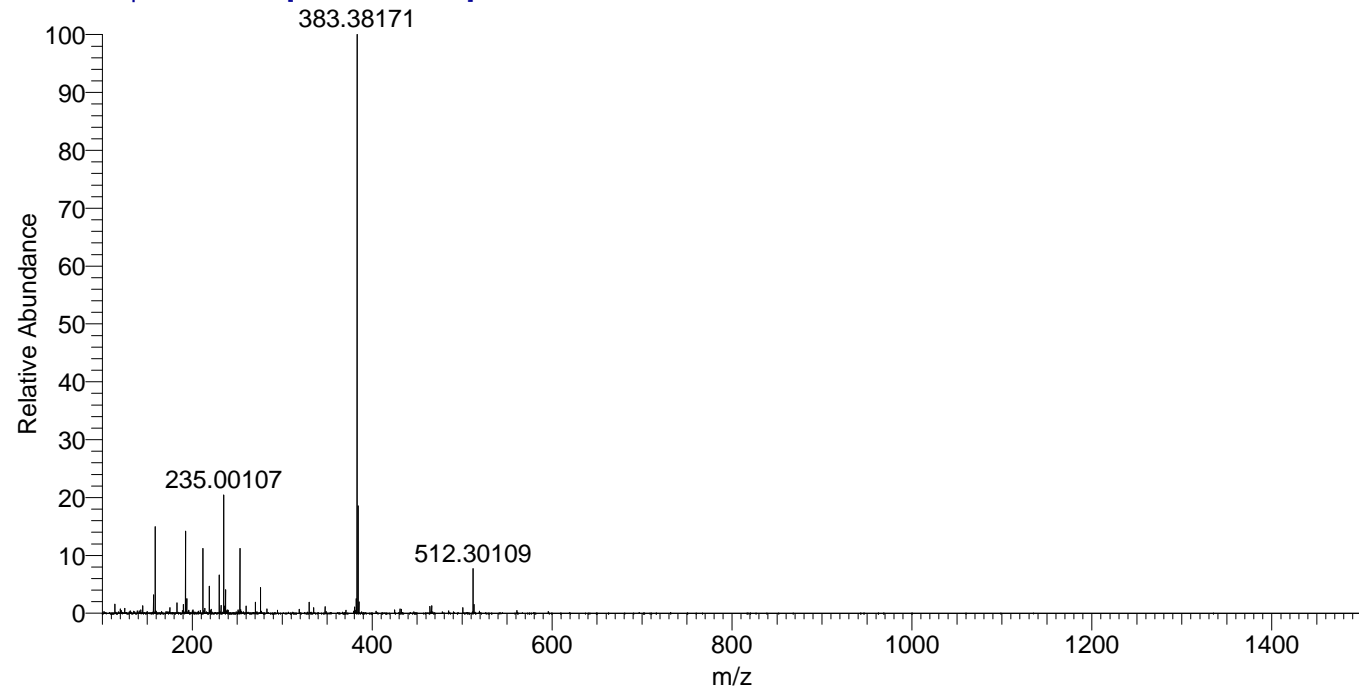
NL: 4.35E7  
 Base Peak m/z=  
 383.37892-383.38276 F:  
 FTMS + p ESI Full ms  
 [100.00-1500.00] MS  
 Egrestis\_HDX

NL: 5.67E6  
 Base Peak m/z=  
 192.69651-192.69843 F:  
 FTMS + p ESI Full ms  
 [100.00-1500.00] MS  
 Egrestis\_HDX

Egrestis\_HDX#280 RT: 1.79  
 T: FTMS + p ESI Full ms [100.00-1500.00]

m/z	Intensity	Relative	Delta (ppm)	Composition
383.38171	37721448.0	100.00	-0.33	C <sub>17</sub> H <sub>33</sub> <sup>2</sup> H <sub>8</sub> O <sub>2</sub> N <sub>7</sub>
			3.71	C <sub>17</sub> H <sub>31</sub> <sup>2</sup> H <sub>9</sub> O <sub>2</sub> N <sub>7</sub>
			-4.36	C <sub>17</sub> H <sub>35</sub> <sup>2</sup> H <sub>7</sub> O <sub>2</sub> N <sub>7</sub>

Egrestis\_HDX #280 RT: 1.79 AV: 1 NL: 3.61E7  
 T: FTMS + p ESI Full ms [100.00-1500.00]



Egrestis\_HDX #280 RT: 1.79 AV: 1 NL: 3.61E7  
 T: FTMS + p ESI Full ms [100.00-1500.00]

