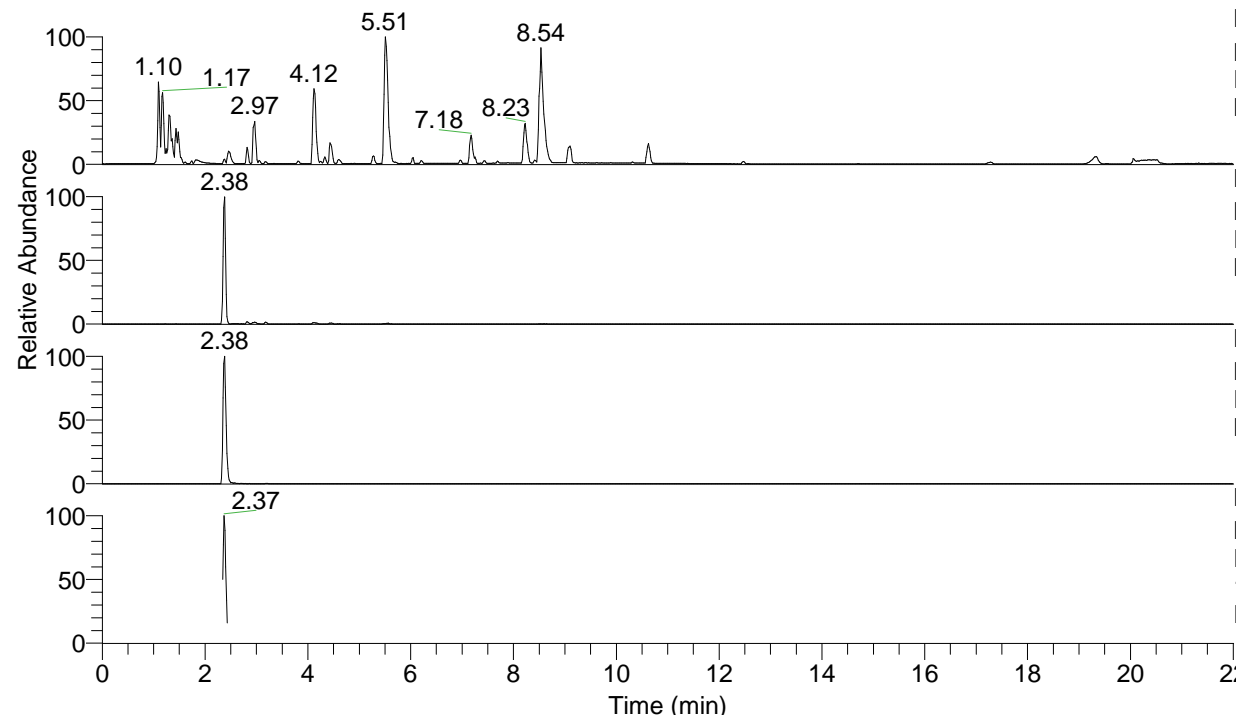


RT: 0.00 - 22.00



NL: 8.71E7
 Base Peak m/z= 100.00000-1500.00000 F:
 FTMS + p ESI Full ms [100.00-1500.00]
 MS Eagrestis

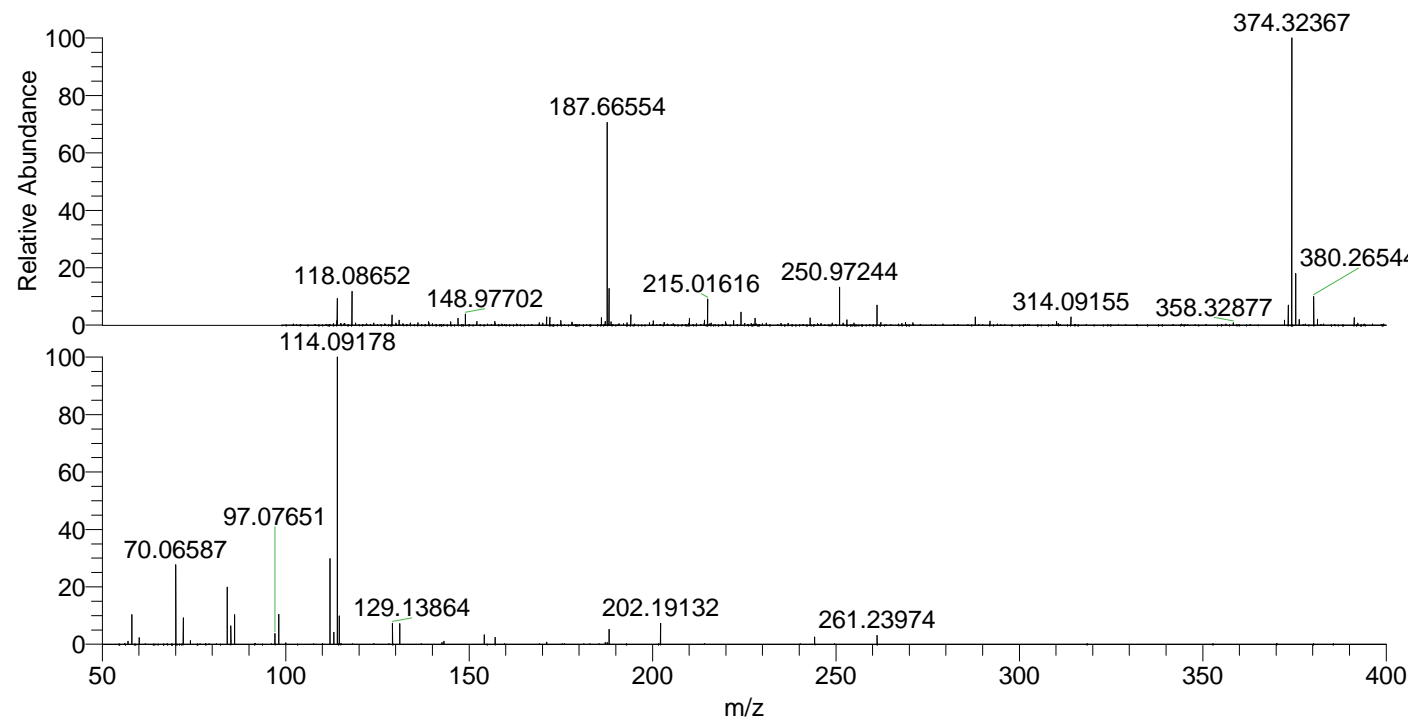
NL: 3.55E6
 Base Peak m/z= 374.32061-374.32809 F:
 FTMS + p ESI Full ms [100.00-1500.00]
 MS Eagrestis

NL: 2.39E6
 Base Peak m/z= 187.66421-187.66797 F:
 FTMS + p ESI Full ms [100.00-1500.00]
 MS Eagrestis

NL: 5.90E5
 Base Peak m/z= 50.00000-1500.00000 F:
 FTMS + p ESI d Full ms2
 187.67@hcd35.00 [50.00-400.00] MS
 Eagrestis

Eagrestis#947-980 RT: 2.35-2.43 AV: 7
 F: FTMS + p ESI d Full ms2 187.67 ...
 m/z= 50.00000-1000.00000

m/z	Intensity	Relative
57.03434	3360.4	1.01
58.06596	33812.1	10.20
60.05649	7346.6	2.22
70.06587	89538.5	27.02
72.08149	30067.2	9.07
74.06073	4147.0	1.25
84.08136	64168.1	19.37
85.07667	20540.9	6.20
86.06058	33801.5	10.20
86.08452	2329.1	0.70
97.07651	11937.8	3.60
98.09690	34327.9	10.36
100.07631	1704.9	0.51
112.08729	30128.6	9.09
112.11241	96317.1	29.07
113.10791	13466.3	4.06
114.09178	331330.3	100.00
114.10298	175468.0	52.96
114.61301	31803.3	9.60
129.13864	23902.3	7.21
131.11815	23092.6	6.97
131.12932	7088.0	2.14
142.62645	2163.9	0.65
143.12914	3513.4	1.06
154.13404	10543.3	3.18
157.14508	7702.1	2.32
171.16077	2345.1	0.71
187.14417	2016.8	0.61
187.66606	1810.1	0.55
188.18697	16769.1	5.06
202.19132	23305.4	7.03
244.21373	8157.3	2.46
261.23974	9943.6	3.00



NL: 3.37E6
 Eagrestis#961 RT: 2.38
 AV: 1 T: FTMS + p ESI
 Full ms [100.00-1500.00]

NL: 3.20E5
 Eagrestis#906-1005 RT:
 2.35-2.43 AV: 7 F: FTMS
 + p ESI d Full ms2
 187.67@hcd35.00
 [50.00-400.00]