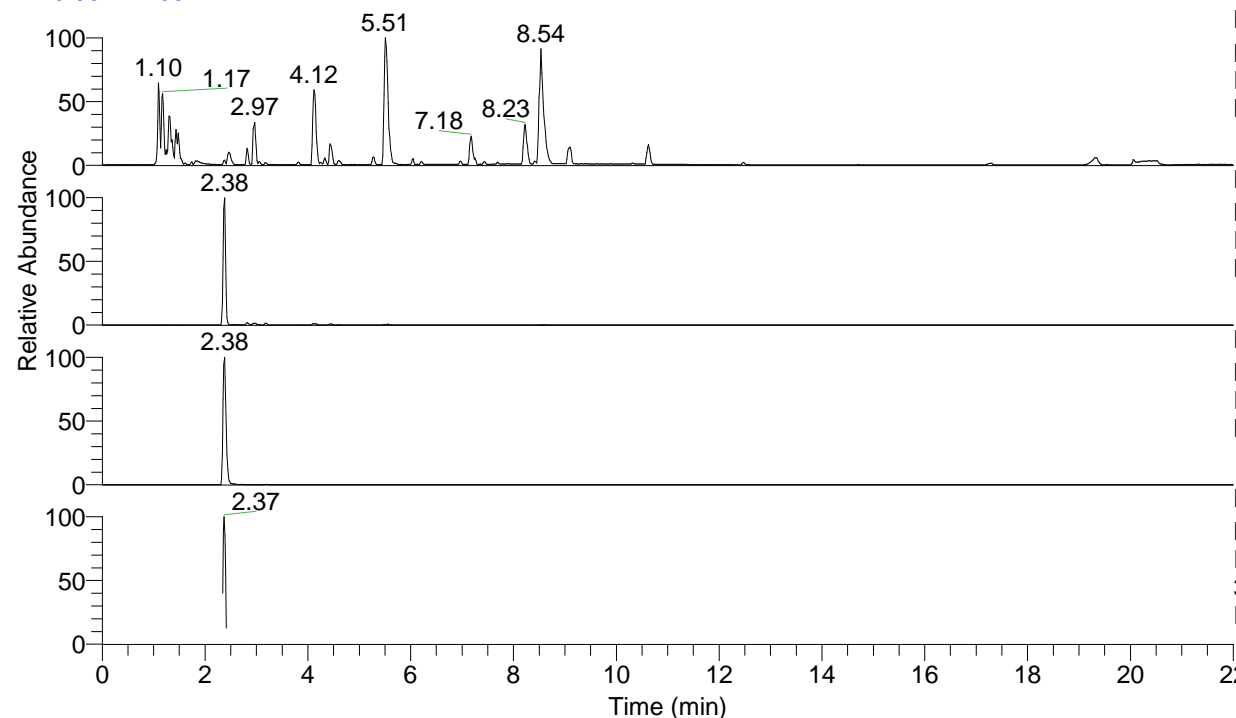


RT: 0.00 - 22.00



NL: 8.71E7
 Base Peak m/z= 100.00000-1500.00000 F:
 FTMS + p ESI Full ms [100.00-1500.00]
 MS Eagrestis

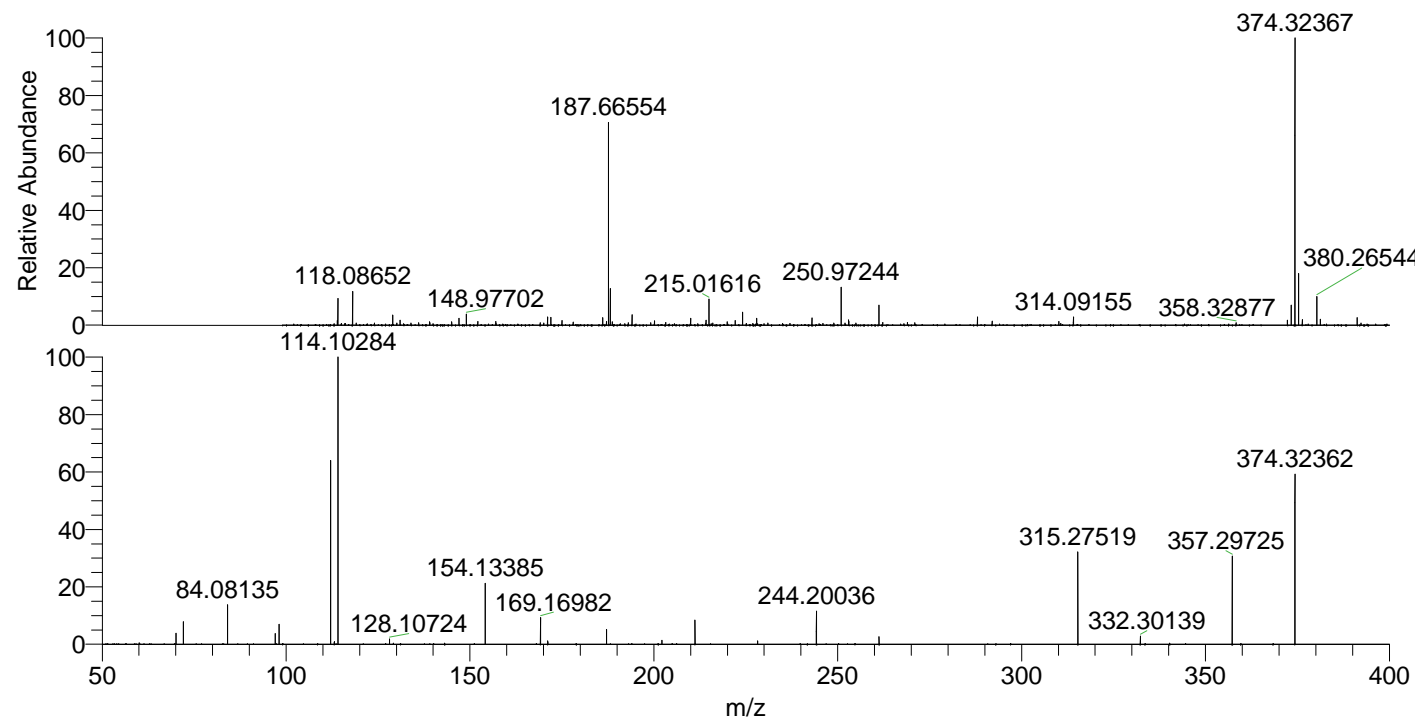
NL: 3.55E6
 Base Peak m/z= 374.32061-374.32809 F:
 FTMS + p ESI Full ms [100.00-1500.00]
 MS Eagrestis

NL: 2.39E6
 Base Peak m/z= 187.66421-187.66797 F:
 FTMS + p ESI Full ms [100.00-1500.00]
 MS Eagrestis

NL: 4.98E5
 Base Peak m/z= 50.00000-1500.00000 F:
 FTMS + p ESI d Full ms2
 374.32@hcd35.00 [50.00-400.00] MS
 Eagrestis

Eagrestis#946-968 RT: 2.34-2.40 AV: 5
 F: FTMS + p ESI d Full ms2 374.32 ...
 m/z= 50.00000-1000.00000

m/z	Intensity	Relative
60.05628	1755.8	0.51
70.06582	13536.4	3.90
72.08154	27637.4	7.96
84.08135	47988.9	13.83
97.07644	12931.4	3.73
98.09693	24603.4	7.09
112.11244	222303.7	64.05
113.10788	3335.9	0.96
114.09162	66231.2	19.08
114.10284	347064.0	100.00
128.10724	6534.4	1.88
154.13385	73460.7	21.17
169.16982	32358.3	9.32
171.16108	3913.9	1.13
187.14429	18021.0	5.19
202.19146	4848.3	1.40
211.19185	29352.2	8.46
228.20557	4244.2	1.22
244.20036	40683.4	11.72
261.23115	9050.6	2.61
315.27519	112170.0	32.32
332.30139	9776.5	2.82
357.29725	107045.2	30.84
374.32362	205335.4	59.16



NL: 3.37E6
 Eagrestis#961 RT: 2.38
 AV: 1 T: FTMS + p ESI
 Full ms [100.00-1500.00]

NL: 3.46E5
 Eagrestis#945-973 RT:
 2.34-2.40 AV: 5 F: FTMS
 + p ESI d Full ms2
 374.32@hcd35.00
 [50.00-400.00]