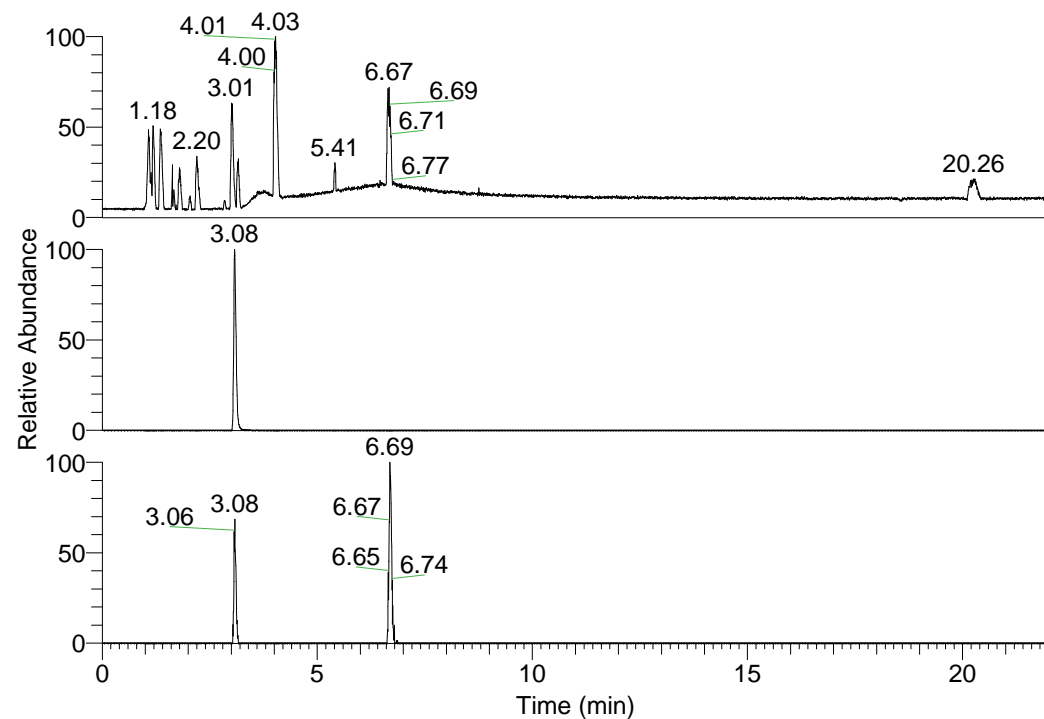


RT: 0.00 - 22.01



NL: 1.58E8
 Base Peak m/z=
 100.00000-1500.00000 F:
 FTMS + p ESI Full ms
 [100.00-1500.00] MS
 Eagrestis_HDX

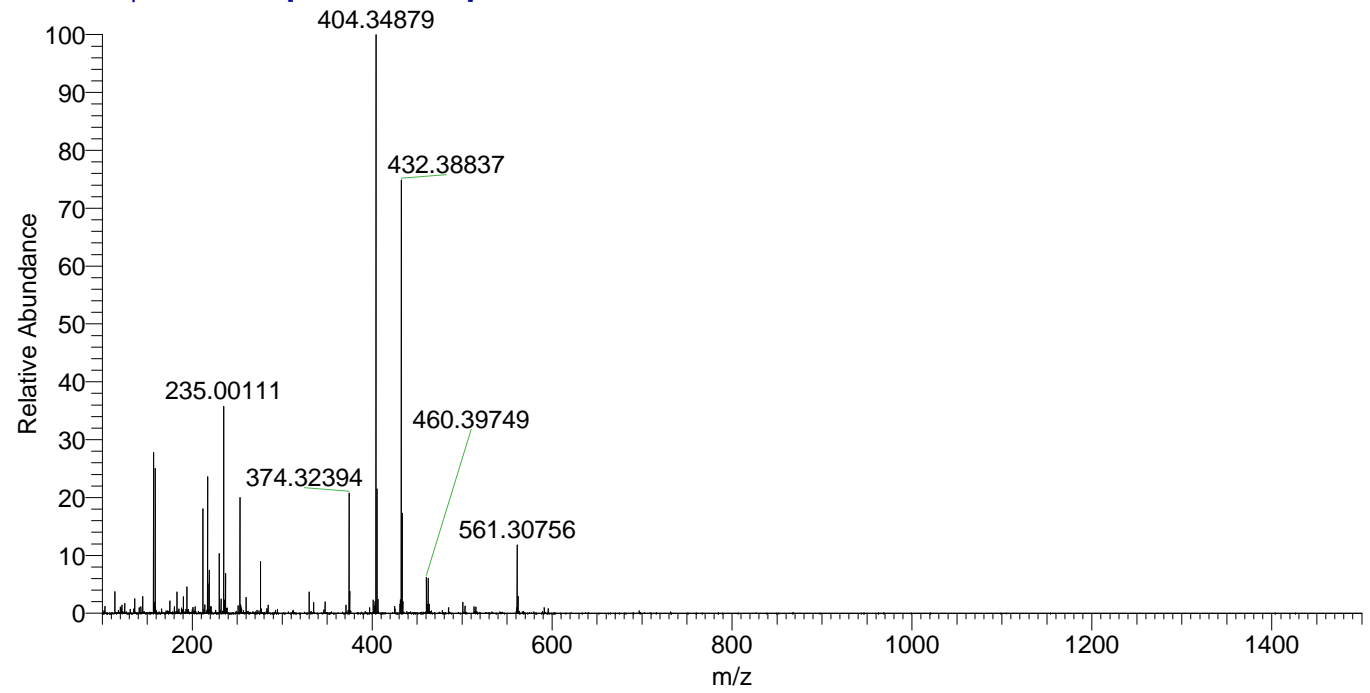
NL: 4.84E6
 Base Peak m/z=
 374.32112-374.32486 F:
 FTMS + p ESI Full ms
 [100.00-1500.00] MS
 Eagrestis_HDX

NL: 2.97E5
 Base Peak m/z=
 188.16761-188.16949 F:
 FTMS + p ESI Full ms
 [100.00-1500.00] MS
 Eagrestis_HDX

Eagrestis_HDX#485 RT: 3.08
 T: FTMS + p ESI Full ms [100.00-1500.00]
 m/z= 374.00000-375.00000

m/z	Intensity	Relative	Delta (ppm)	Composition
374.32394	4688127.0	100.00	-0.12	C ₁₈ H ₂₆ ² H ₈ O ₂ N ₆
			4.01	C ₁₈ H ₂₄ ² H ₉ O ₂ N ₆
			-4.26	C ₁₈ H ₂₈ ² H ₇ O ₂ N ₆

Eagrestis_HDX #485 RT: 3.08 AV: 1 NL: 2.20E7
 T: FTMS + p ESI Full ms [100.00-1500.00]



Eagrestis_HDX #485 RT: 3.08 AV: 1 NL: 4.57E6
 T: FTMS + p ESI Full ms [100.00-1500.00]

