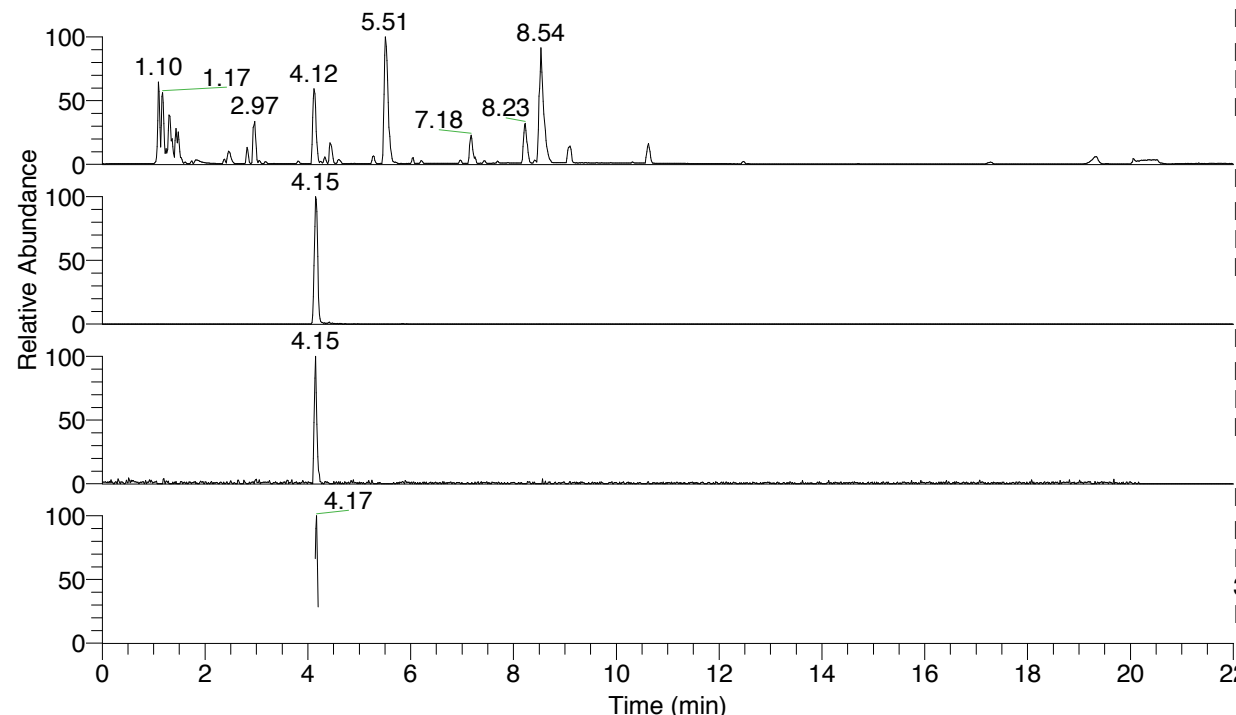


RT: 0.00 - 22.00



NL: 8.71E7
 Base Peak m/z= 100.00000-1500.00000 F:
 FTMS + p ESI Full ms [100.00-1500.00]
 MS Eagrestis

NL: 1.24E6
 Base Peak m/z= 365.26285-365.27015 F:
 FTMS + p ESI Full ms [100.00-1500.00]
 MS Eagrestis

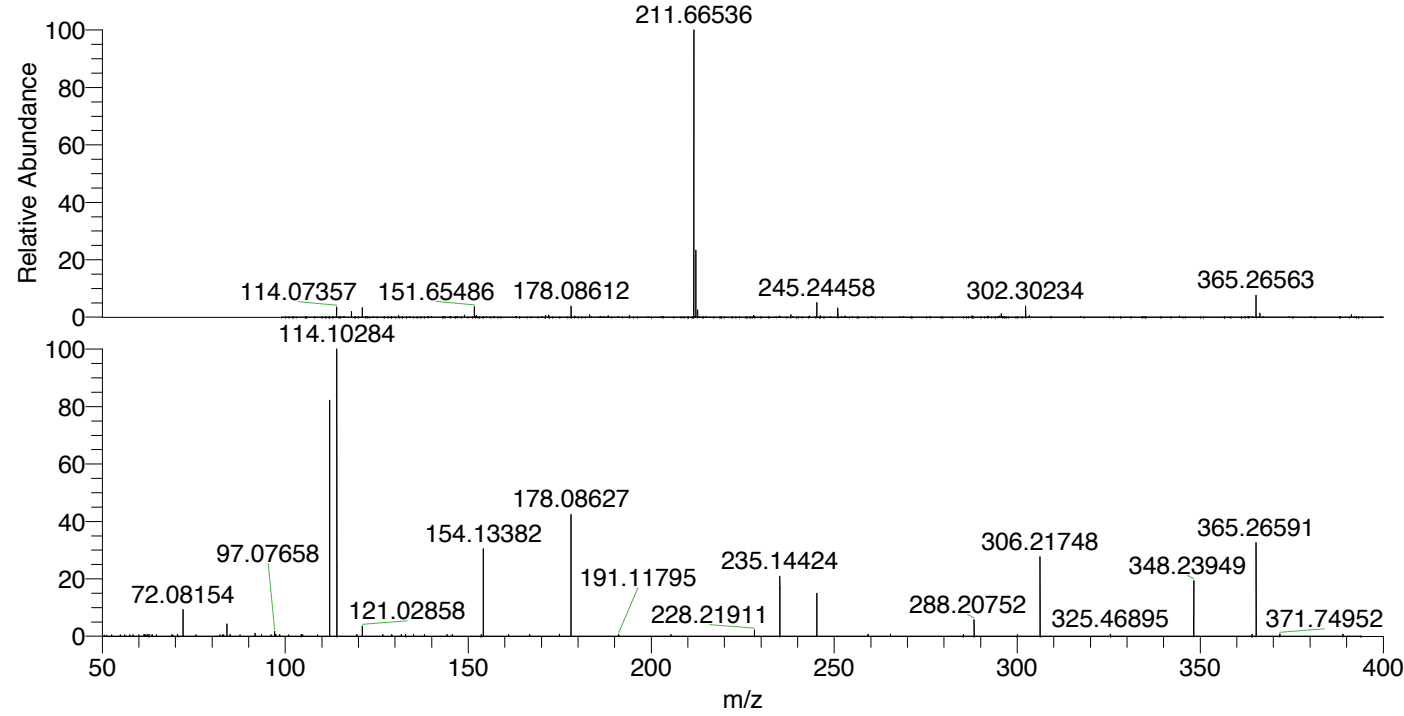
NL: 1.22E5
 Base Peak m/z= 183.13533-183.13899 F:
 FTMS + p ESI Full ms [100.00-1500.00]
 MS Eagrestis

NL: 1.84E5
 Base Peak m/z= 50.00000-1500.00000 F:
 FTMS + p ESI d Full ms2
 365.27@hcd35.00 [50.00-390.00] MS
 Eagrestis

Eagrestis#1667-1690 RT: 4.14-4.20 AV:

F: FTMS + p ESI d Full ms2 365.27 ...
 m/z= 50.00000-1000.00000

| m/z | Intensity | Relative |
|-----------|-----------|----------|
| 58.46750 | 652.7 | 0.55 |
| 61.37456 | 690.8 | 0.58 |
| 61.56677 | 670.0 | 0.56 |
| 61.92660 | 758.6 | 0.64 |
| 62.76885 | 733.4 | 0.62 |
| 63.66204 | 645.2 | 0.54 |
| 70.63730 | 690.8 | 0.58 |
| 72.08154 | 11127.2 | 9.35 |
| 84.08164 | 5243.5 | 4.40 |
| 84.90700 | 665.7 | 0.56 |
| 87.62476 | 653.5 | 0.55 |
| 91.75273 | 782.1 | 0.66 |
| 91.75856 | 1311.7 | 1.10 |
| 93.50893 | 755.5 | 0.63 |
| 96.13731 | 657.0 | 0.55 |
| 97.07658 | 2046.6 | 1.72 |
| 97.42967 | 774.3 | 0.65 |
| 98.49547 | 739.6 | 0.62 |
| 104.39789 | 740.9 | 0.62 |
| 104.79507 | 656.5 | 0.55 |
| 112.11242 | 97519.6 | 81.91 |
| 114.10284 | 119056.7 | 100.00 |
| 119.60509 | 683.1 | 0.57 |
| 121.02858 | 4306.5 | 3.62 |
| 126.65532 | 797.8 | 0.67 |
| 129.13945 | 766.8 | 0.64 |
| 131.75054 | 733.4 | 0.62 |
| 132.90286 | 750.4 | 0.63 |
| 135.05885 | 704.7 | 0.59 |
| 138.05918 | 671.3 | 0.56 |
| 144.20618 | 715.9 | 0.60 |
| 145.65031 | 778.0 | 0.65 |
| 153.55534 | 732.7 | 0.62 |
| 154.13382 | 36116.2 | 30.34 |
| 161.02445 | 777.8 | 0.65 |
| 166.81511 | 712.2 | 0.60 |
| 174.94812 | 822.3 | 0.69 |
| 178.08627 | 50347.3 | 42.29 |
| 191.11795 | 782.4 | 0.66 |
| 205.37977 | 785.7 | 0.66 |
| 228.21911 | 2687.0 | 2.26 |
| 235.14424 | 24742.0 | 20.78 |
| 245.24450 | 17863.4 | 15.00 |
| 259.25852 | 839.3 | 0.70 |
| 265.35680 | 847.5 | 0.71 |
| 285.27133 | 746.2 | 0.63 |
| 288.20752 | 6877.9 | 5.78 |
| 300.05078 | 712.8 | 0.60 |
| 306.21748 | 32813.9 | 27.56 |
| 325.46895 | 845.5 | 0.71 |
| 348.23949 | 23359.8 | 19.62 |
| 364.16865 | 794.8 | 0.67 |
| 365.26591 | 38768.9 | 32.56 |
| 371.74952 | 908.4 | 0.76 |
| 388.97552 | 848.4 | 0.71 |



NL: 1.53E7
 Eagrestis#1669 RT: 4.15
 AV: 1 T: FTMS + p ESI
 Full ms [100.00-1500.00]

NL: 1.18E5
 Eagrestis#1664-1690 RT:
 4.14-4.20 AV: 5 F: FTMS
 + p ESI d Full ms2
 365.27@hcd35.00
 [50.00-390.00]

Eagrestis#1667-1690 RT: 4.14-4.20 AV: 5

F: FTMS + p ESI d Full ms2 365.27@hcd35.00 [50.00-390.00]

m/z= 50.00000-1000.00000

| m/z | Intensity | Relative |
|-----------|-----------|----------|
| 57.53065 | 613.3 | 0.52 |
| 58.46750 | 652.7 | 0.55 |
| 61.37456 | 690.8 | 0.58 |
| 61.56677 | 670.0 | 0.56 |
| 61.92660 | 758.6 | 0.64 |
| 62.76885 | 733.4 | 0.62 |
| 63.60089 | 616.4 | 0.52 |
| 63.66204 | 645.2 | 0.54 |
| 64.83588 | 601.5 | 0.51 |
| 69.30677 | 631.4 | 0.53 |
| 70.63730 | 690.8 | 0.58 |
| 72.08154 | 11127.2 | 9.35 |
| 75.61658 | 630.2 | 0.53 |
| 82.85570 | 610.5 | 0.51 |
| 83.19804 | 620.6 | 0.52 |
| 84.08164 | 5243.5 | 4.40 |
| 84.90700 | 665.7 | 0.56 |
| 87.62476 | 653.5 | 0.55 |
| 91.75273 | 782.1 | 0.66 |
| 91.75856 | 1311.7 | 1.10 |
| 93.50893 | 755.5 | 0.63 |
| 96.13731 | 657.0 | 0.55 |
| 97.07658 | 2046.6 | 1.72 |
| 97.23798 | 617.7 | 0.52 |
| 97.42967 | 774.3 | 0.65 |
| 98.49547 | 739.6 | 0.62 |
| 100.91286 | 602.8 | 0.51 |
| 104.39789 | 740.9 | 0.62 |
| 104.79507 | 656.5 | 0.55 |
| 108.78894 | 630.0 | 0.53 |
| 112.11242 | 97519.6 | 81.91 |
| 114.10284 | 119056.7 | 100.00 |
| 119.60509 | 683.1 | 0.57 |
| 121.02858 | 4306.5 | 3.62 |
| 126.65532 | 797.8 | 0.67 |
| 129.13945 | 766.8 | 0.64 |
| 131.75054 | 733.4 | 0.62 |
| 132.90286 | 750.4 | 0.63 |
| 135.05885 | 704.7 | 0.59 |

Egrestis#1667-1690 RT: 4.14-4.20 AV: 5

F: FTMS + p ESI d Full ms2 365.27@hcd35.00 [50.00-390.00]

m/z= 50.00000-1000.00000

| m/z | Intensity | Relative |
|-----------|-----------|----------|
| 138.05918 | 671.3 | 0.56 |
| 144.20618 | 715.9 | 0.60 |
| 145.65031 | 778.0 | 0.65 |
| 153.55534 | 732.7 | 0.62 |
| 154.13382 | 36116.2 | 30.34 |
| 161.02445 | 777.8 | 0.65 |
| 166.81511 | 712.2 | 0.60 |
| 174.94812 | 822.3 | 0.69 |
| 178.08627 | 50347.3 | 42.29 |
| 191.11795 | 782.4 | 0.66 |
| 205.37977 | 785.7 | 0.66 |
| 228.21911 | 2687.0 | 2.26 |
| 235.14424 | 24742.0 | 20.78 |
| 245.24450 | 17863.4 | 15.00 |
| 259.25852 | 839.3 | 0.70 |
| 265.35680 | 847.5 | 0.71 |
| 285.27133 | 746.2 | 0.63 |
| 288.20752 | 6877.9 | 5.78 |
| 300.05078 | 712.8 | 0.60 |
| 306.21748 | 32813.9 | 27.56 |
| 325.46895 | 845.5 | 0.71 |
| 348.23949 | 23359.8 | 19.62 |
| 364.16865 | 794.8 | 0.67 |
| 365.26591 | 38768.9 | 32.56 |
| 371.74952 | 908.4 | 0.76 |
| 388.97552 | 848.4 | 0.71 |