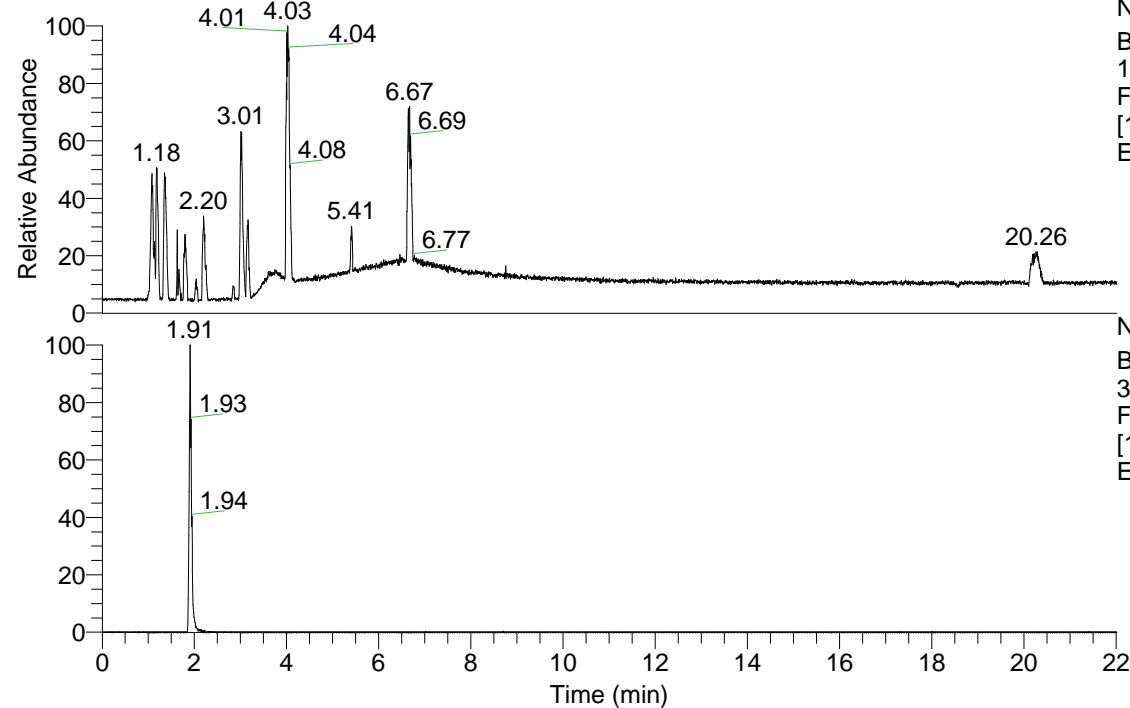


RT: 0.00 - 22.01



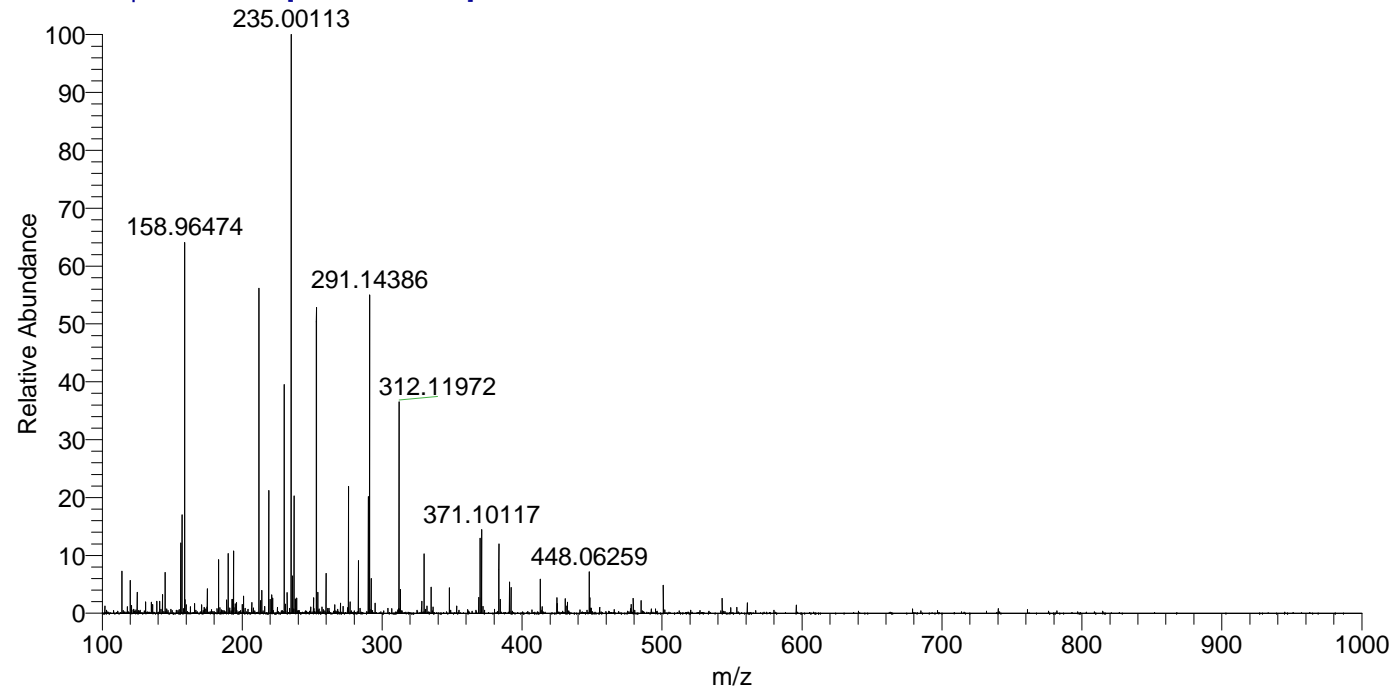
NL: 1.58E8
 Base Peak m/z= 100.00000-1500.00000
 F: FTMS + p ESI Full ms [100.00-1500.00] MS
 Eagrestis_HDX

Eagrestis_HDX#300 RT: 1.91
 T: FTMS + p ESI Full ms [100.00-1500.00]
 m/z= 371.00000-372.00000

m/z	Intensity	Relative	Delta (ppm)	Composition
371.10117	1033862.1	100.00	-0.21	C ₁₀ H ₉ ² H ₆ O ₈ N ₅ S
			3.96	C ₁₀ H ₇ ² H ₇ O ₈ N ₅ S
			-4.39	C ₁₀ H ₁₁ ² H ₅ O ₈ N ₅ S
			8.13	C ₁₀ H ₅ ² H ₈ O ₈ N ₅ S
			-8.56	C ₁₀ H ₁₃ ² H ₄ O ₈ N ₅ S
			12.30	C ₁₀ H ₃ ² H ₉ O ₈ N ₅ S
			-12.73	C ₁₀ H ₁₅ ² H ₃ O ₈ N ₅ S
			16.47	C ₁₀ H ² H ₁₀ O ₈ N ₅ S
			-16.90	C ₁₀ H ₁₇ ² H ₂ O ₈ N ₅ S
			-21.07	C ₁₀ H ₁₉ ² H ₀ O ₈ N ₅ S

NL: 1.16E6
 Base Peak m/z= 371.09838-371.10210
 F: FTMS + p ESI Full ms [100.00-1500.00] MS
 Eagrestis_HDX

Eagrestis_HDX #300 RT: 1.91 AV: 1 NL: 7.14E6
 T: FTMS + p ESI Full ms [100.00-1500.00]



Eagrestis_HDX #300 RT: 1.91 AV: 1 NL: 1.03E6
 T: FTMS + p ESI Full ms [100.00-1500.00]

