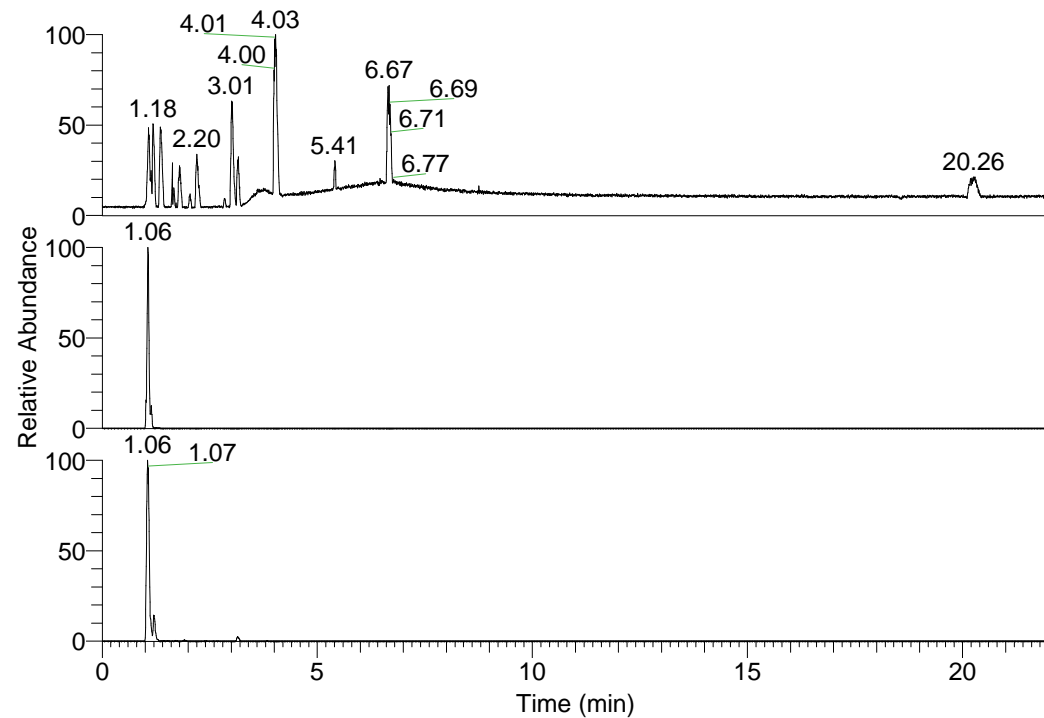


RT: 0.00 - 22.01



NL: 1.58E8
 Base Peak m/z=
 100.00000-1500.00000 F:
 FTMS + p ESI Full ms
 [100.00-1500.00] MS
 Egrestis_HDX

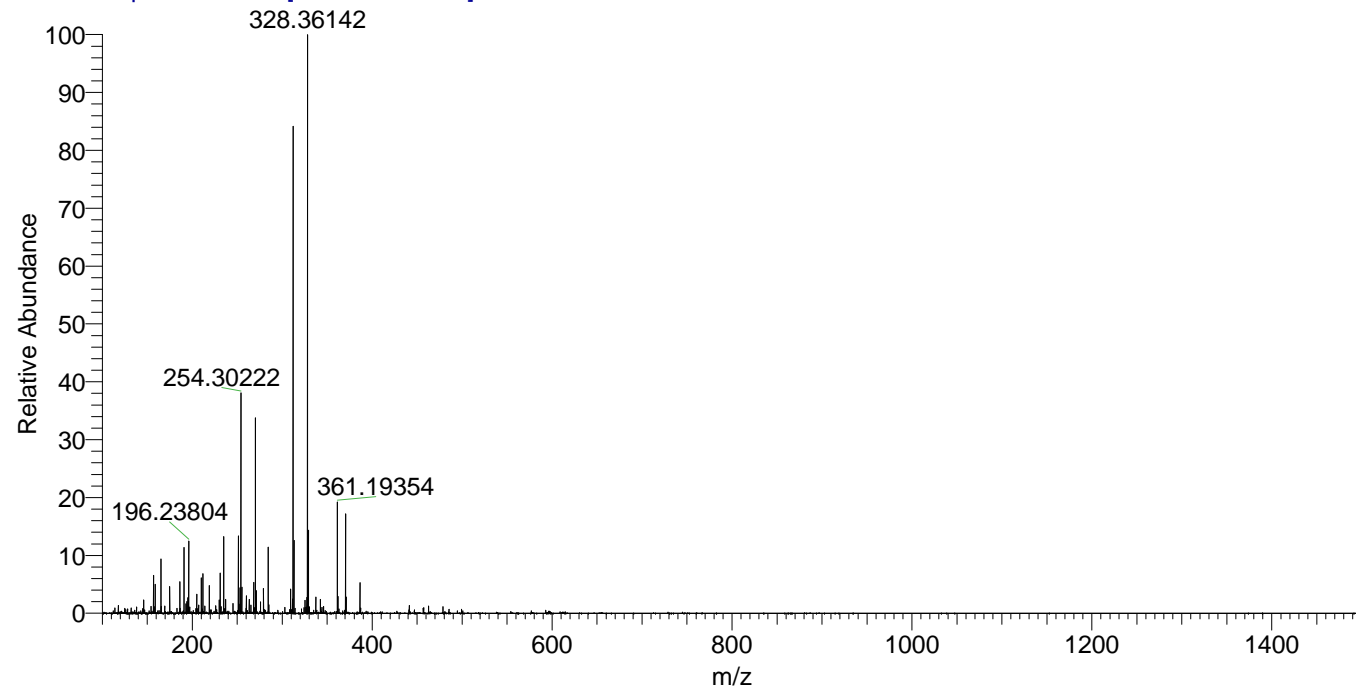
NL: 9.58E6
 Base Peak m/z=
 370.42827-370.43197 F:
 FTMS + p ESI Full ms
 [100.00-1500.00] MS
 Egrestis_HDX

NL: 3.15E6
 Base Peak m/z=
 186.22118-186.22304 F:
 FTMS + p ESI Full ms
 [100.00-1500.00] MS
 Egrestis_HDX

Egrestis_HDX#159 RT: 1.06
 T: FTMS + p ESI Full ms [100.00-1500.00]
 m/z= 370.00000-371.00000

m/z	Intensity	Relative	Delta (ppm)	Composition
370.43085	9582118.0	100.00	-0.72	C ₁₇ H ₃₄ ² H ₁₀ N ₈
			3.46	C ₁₇ H ₃₂ ² H ₁₁ N ₈
			-4.90	C ₁₇ H ₃₆ ² H ₉ N ₈

Egrestis_HDX #159 RT: 1.06 AV: 1 NL: 5.46E7
 T: FTMS + p ESI Full ms [100.00-1500.00]



Egrestis_HDX #159 RT: 1.06 AV: 1 NL: 1.05E7
 T: FTMS + p ESI Full ms [100.00-1500.00]

