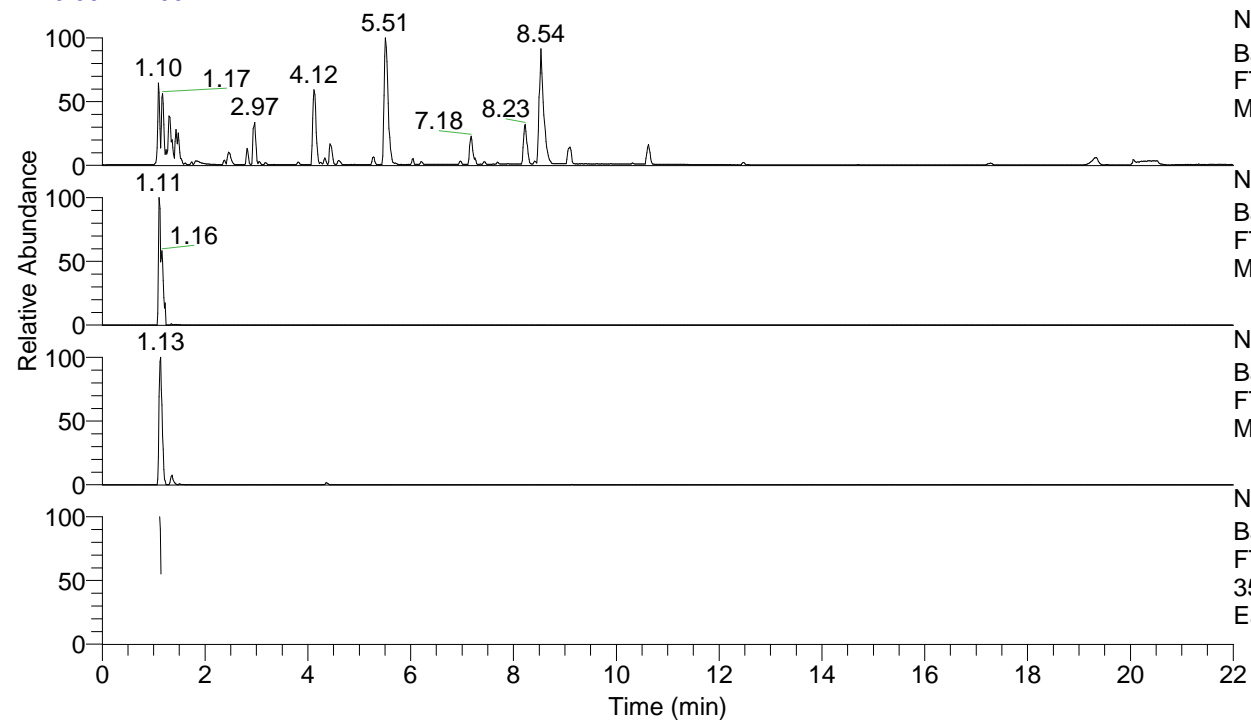


RT: 0.00 - 22.00



NL: 8.71E7  
 Base Peak m/z= 100.00000-1500.00000 F:  
 FTMS + p ESI Full ms [100.00-1500.00]  
 MS Eagrestis

NL: 9.54E6  
 Base Peak m/z= 359.35748-359.36466 F:  
 FTMS + p ESI Full ms [100.00-1500.00]  
 MS Eagrestis

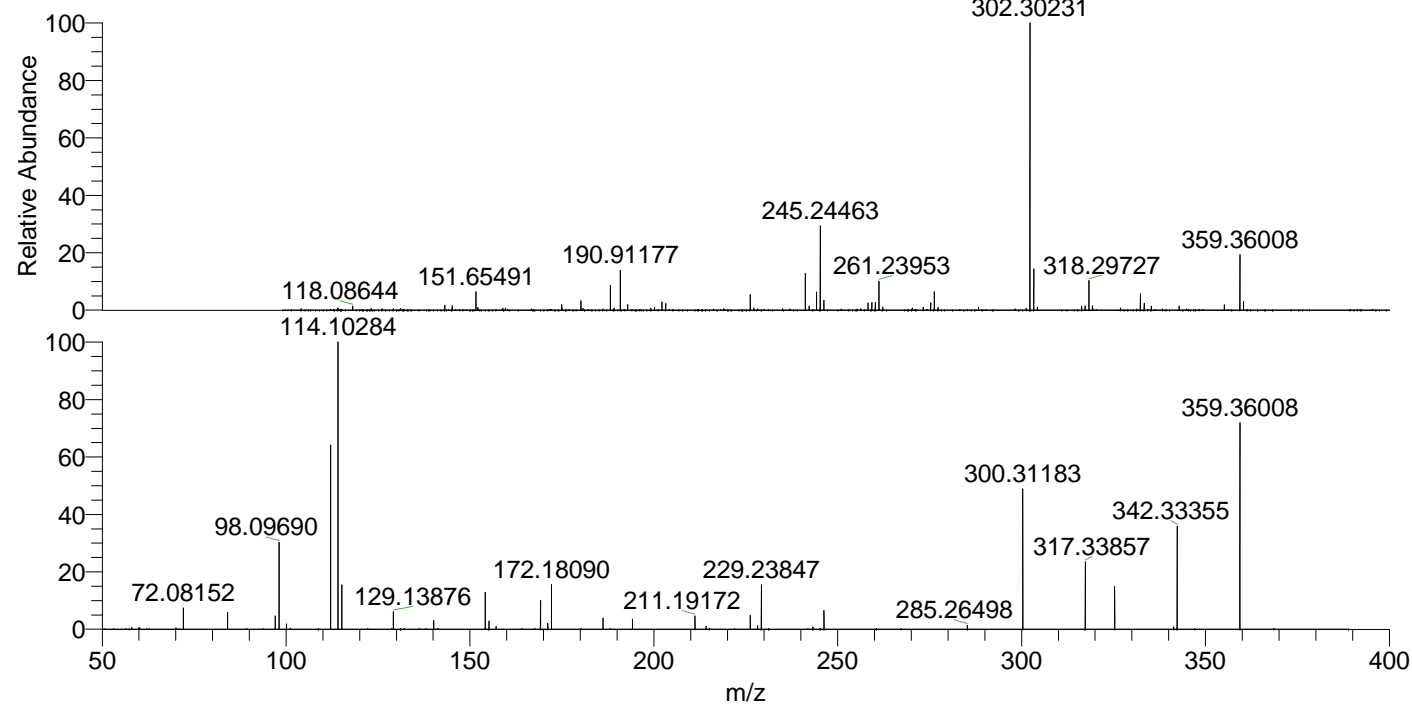
NL: 2.28E6  
 Base Peak m/z= 180.18265-180.18625 F:  
 FTMS + p ESI Full ms [100.00-1500.00]  
 MS Eagrestis

NL: 1.12E6  
 Base Peak m/z= 50.00000-1500.00000 F:  
 FTMS + p ESI d Full ms2  
 359.36@hcd35.00 [50.00-385.00] MS  
 Eagrestis

Eagrestis#448-462 RT: 1.12-1.14 AV: 3

F: FTMS + p ESI d Full ms2 359.36 ...  
 m/z= 50.00000-1000.00000

m/z	Intensity	Relative
58.06593	5251.8	0.61
60.05647	4944.3	0.58
70.06572	4600.6	0.54
72.08152	63528.0	7.41
84.08144	51014.9	5.95
97.07655	39380.6	4.60
98.09690	262220.9	30.60
100.07617	15372.9	1.79
112.11242	548970.9	64.07
114.10284	856878.5	100.00
115.12329	132611.9	15.48
129.13876	53870.6	6.29
140.11807	26824.7	3.13
154.13382	109628.8	12.79
155.15422	24744.0	2.89
157.13391	8003.1	0.93
169.16985	85811.5	10.01
171.16066	17895.9	2.09
172.18090	134210.2	15.66
186.19657	32439.9	3.79
194.16562	30124.8	3.52
211.19172	39485.6	4.61
214.19189	8850.8	1.03
226.22758	41786.0	4.88
228.21795	11346.1	1.32
229.23847	133640.7	15.60
243.25410	7364.1	0.86
246.26509	55893.4	6.52
285.26498	12150.9	1.42
300.31183	419623.2	48.97
317.33857	200540.8	23.40
325.30721	130624.9	15.24
341.33812	7271.9	0.85
342.33355	311314.4	36.33
359.36008	631356.9	73.68



NL: 4.84E7  
 Eagrestis#445 RT: 1.11  
 AV: 1 T: FTMS + p ESI  
 Full ms [100.00-1500.00]

NL: 8.53E5  
 Eagrestis#446-463 RT:  
 1.12-1.14 AV: 3 F: FTMS  
 + p ESI d Full ms2  
 359.36@hcd35.00  
 [50.00-385.00]