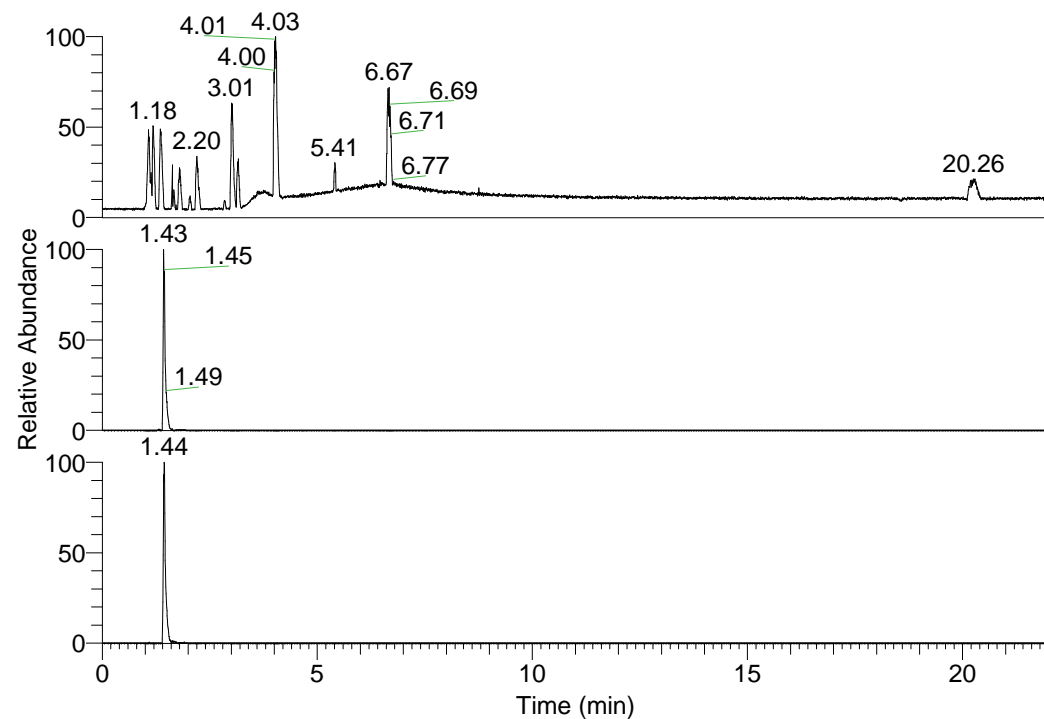


RT: 0.00 - 22.01



NL: 1.58E8  
Base Peak m/z=  
100.00000-1500.00000 F:  
FTMS + p ESI Full ms  
[100.00-1500.00] MS  
Egrestis\_HDX

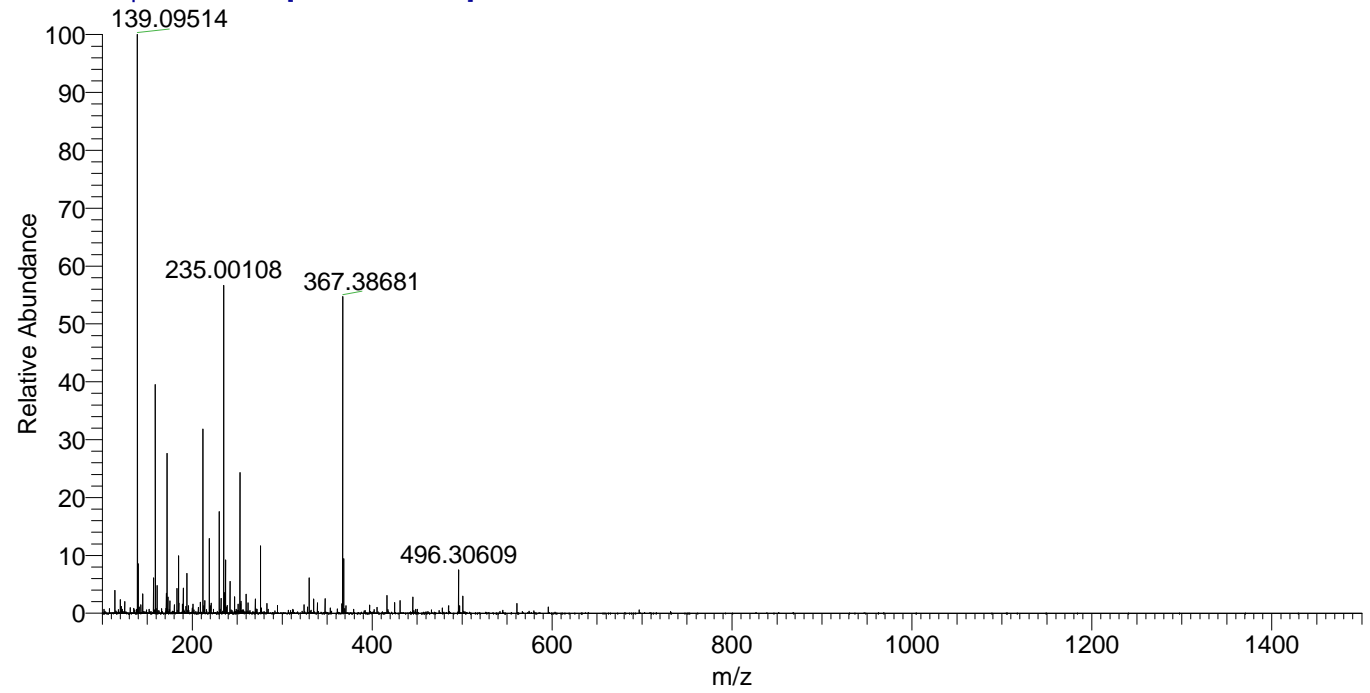
NL: 8.31E6  
Base Peak m/z=  
367.38409-367.38777 F:  
FTMS + p ESI Full ms  
[100.00-1500.00] MS  
Egrestis\_HDX

NL: 1.65E6  
Base Peak m/z=  
184.69909-184.70093 F:  
FTMS + p ESI Full ms  
[100.00-1500.00] MS  
Egrestis\_HDX

Egrestis\_HDX#222 RT: 1.43  
T: FTMS + p ESI Full ms [100.00-1500.00]  
m/z= 367.00000-368.00000

m/z	Intensity	Relative	Delta (ppm)	Composition
367.38681	8312162.0	100.00	-0.31	C <sub>17</sub> H <sub>33</sub> <sup>2</sup> H <sub>8</sub> ON <sub>7</sub>
			3.90	C <sub>17</sub> H <sub>31</sub> <sup>2</sup> H <sub>9</sub> ON <sub>7</sub>
			-4.52	C <sub>17</sub> H <sub>35</sub> <sup>2</sup> H <sub>7</sub> ON <sub>7</sub>

Egrestis\_HDX #222 RT: 1.43 AV: 1 NL: 1.49E7  
T: FTMS + p ESI Full ms [100.00-1500.00]



Egrestis\_HDX #222 RT: 1.43 AV: 1 NL: 8.14E6  
T: FTMS + p ESI Full ms [100.00-1500.00]

