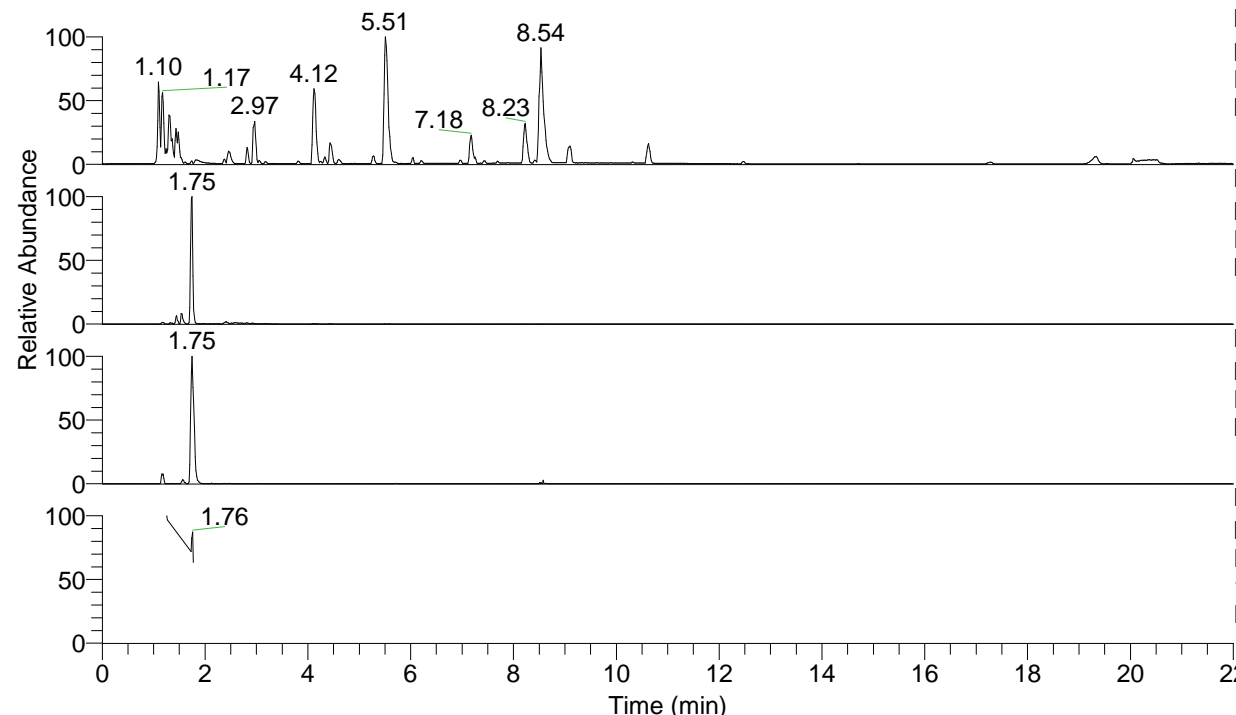


RT: 0.00 - 22.00



NL: 8.71E7
 Base Peak m/z= 100.00000-1500.00000 F:
 FTMS + p ESI Full ms [100.00-1500.00]
 MS Eagrestis

NL: 2.27E6
 Base Peak m/z= 358.32585-358.33301 F:
 FTMS + p ESI Full ms [100.00-1500.00]
 MS Eagrestis

NL: 5.65E5
 Base Peak m/z= 179.66683-179.67043 F:
 FTMS + p ESI Full ms [100.00-1500.00]
 MS Eagrestis

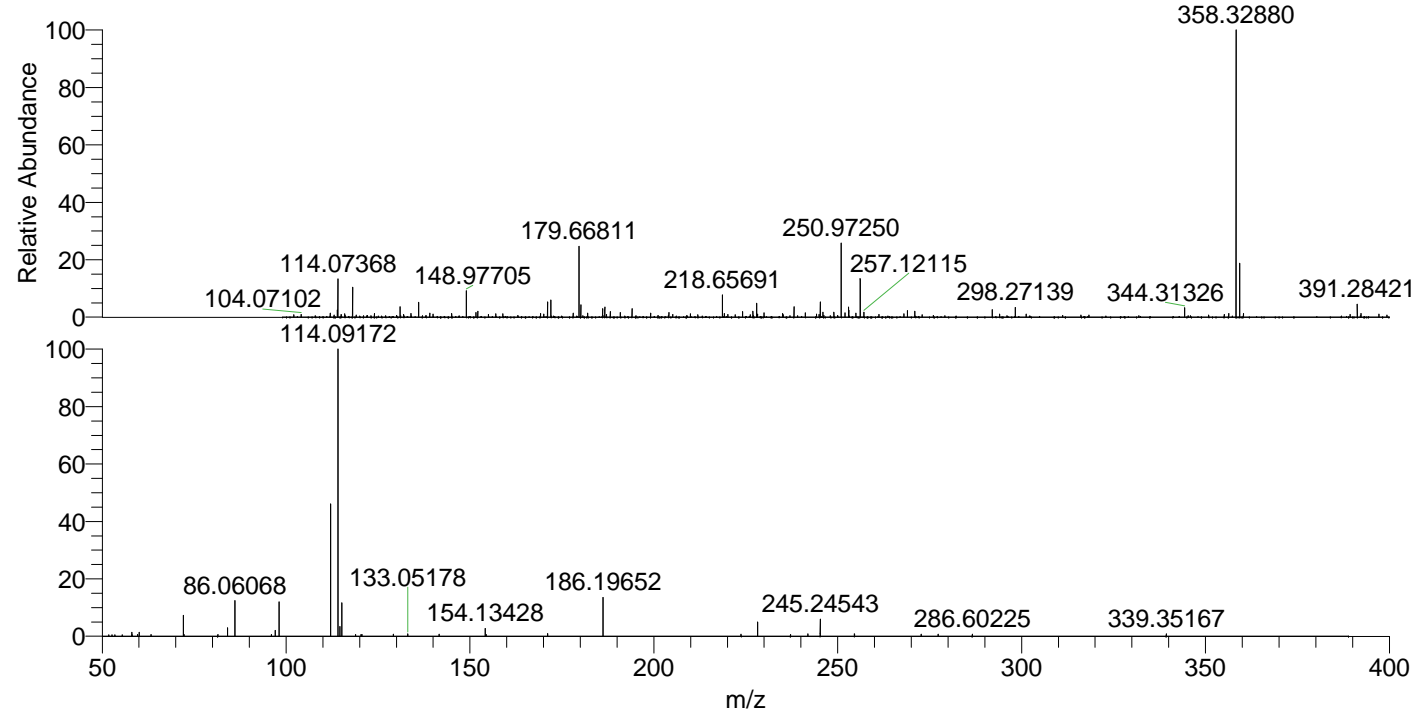
NL: 1.80E5
 Base Peak m/z= 50.00000-1500.00000 F:
 FTMS + p ESI d Full ms2
 179.67@hcd35.00 [50.00-385.00] MS
 Eagrestis

Eagrestis#707-717 RT: 1.74-1.77 AV: 3

F: FTMS + p ESI d Full ms2 179.67 ...

m/z= 50.00000-1000.00000

m/z	Intensity	Relative
55.43582	649.0	0.50
58.06587	1728.6	1.34
58.11208	683.5	0.53
59.61387	741.0	0.57
60.05647	1798.2	1.39
63.26343	748.9	0.58
72.08147	9315.5	7.22
72.21466	728.3	0.56
81.42485	759.8	0.59
84.08140	3698.9	2.87
86.06068	15987.5	12.39
96.01087	834.3	0.65
97.07640	2555.9	1.98
98.09702	15085.7	11.69
112.11243	57697.3	44.70
114.08389	2445.1	1.89
114.09172	129068.8	100.00
114.10295	62065.9	48.09
114.61317	4288.3	3.32
115.12329	14673.5	11.37
118.86718	815.3	0.63
120.37048	762.6	0.59
120.59888	729.5	0.57
129.13925	948.0	0.73
133.05178	988.0	0.77
141.63097	924.2	0.72
154.13428	3454.5	2.68
154.40529	777.5	0.60
171.14909	1220.6	0.95
186.19652	16866.9	13.07
223.72019	949.5	0.74
228.21822	6335.1	4.91
237.15254	795.5	0.62
241.89384	1041.7	0.81
245.24543	7395.0	5.73
254.54897	981.7	0.76
272.69024	879.8	0.68
277.32360	937.6	0.73
286.60225	977.1	0.76
339.35167	1109.7	0.86



NL: 2.16E6
 Eagrestis#709 RT: 1.75
 AV: 1 T: FTMS + p ESI
 Full ms [100.00-1500.00]

NL: 1.25E5
 Eagrestis#703-718 RT:
 1.74-1.77 AV: 3 F: FTMS
 + p ESI d Full ms2
 179.67@hcd35.00
 [50.00-385.00]