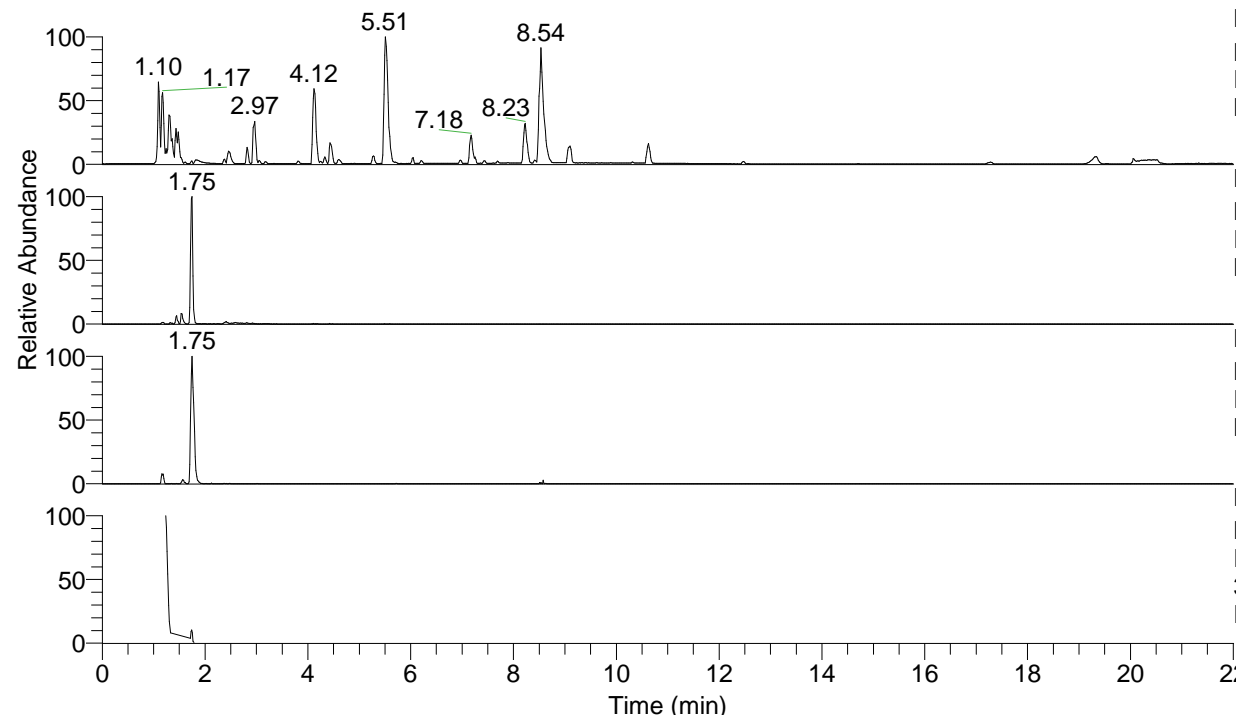


RT: 0.00 - 22.00



NL: 8.71E7  
 Base Peak m/z= 100.00000-1500.00000 F:  
 FTMS + p ESI Full ms [100.00-1500.00]  
 MS Eagrestis

NL: 2.27E6  
 Base Peak m/z= 358.32585-358.33301 F:  
 FTMS + p ESI Full ms [100.00-1500.00]  
 MS Eagrestis

NL: 5.65E5  
 Base Peak m/z= 179.66683-179.67043 F:  
 FTMS + p ESI Full ms [100.00-1500.00]  
 MS Eagrestis

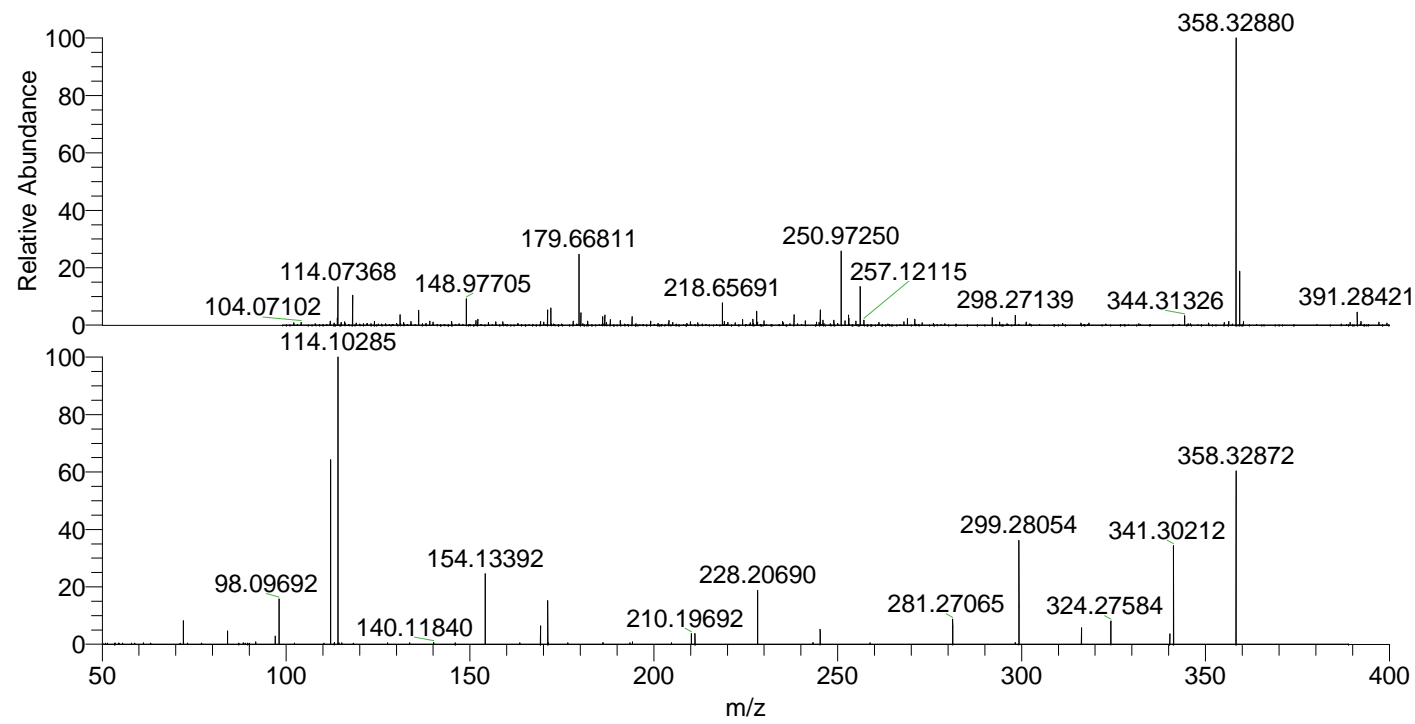
NL: 2.86E6  
 Base Peak m/z= 50.00000-1500.00000 F:  
 FTMS + p ESI d Full ms2  
 358.33@hcd35.00 [50.00-385.00] MS  
 Eagrestis

Eagrestis#700-710 RT: 1.73-1.75 AV: 3

F: FTMS + p ESI d Full ms2 358.33 ...

m/z= 50.00000-1000.00000

m/z	Intensity	Relative
61.16592	1352.5	0.54
72.08153	20753.9	8.23
84.08145	11766.5	4.67
91.75841	2057.7	0.82
97.07654	7267.7	2.88
98.09692	40564.2	16.10
112.10624	2358.0	0.94
112.11243	162481.5	64.47
113.10793	1406.1	0.56
114.09169	41525.8	16.48
114.10285	252028.9	100.00
114.38586	1281.1	0.51
115.12320	1322.9	0.52
140.11840	1534.6	0.61
146.00305	1293.7	0.51
154.13392	61799.0	24.52
169.17025	16473.9	6.54
171.14877	38292.2	15.19
171.26229	1278.5	0.51
176.62220	1279.7	0.51
186.19654	1521.9	0.60
194.16630	2193.4	0.87
210.19692	9431.7	3.74
211.19191	9401.6	3.73
228.20690	47364.2	18.79
243.25496	1720.0	0.68
245.23402	13104.4	5.20
258.75270	1333.3	0.53
281.27065	22446.3	8.91
298.29654	1463.5	0.58
299.28054	92705.6	36.78
316.30716	14483.2	5.75
324.27584	20869.7	8.28
340.31868	9343.5	3.71
341.30212	87134.0	34.57
358.32872	156716.8	62.18



NL: 2.16E6  
 Eagrestis#709 RT: 1.75  
 AV: 1 T: FTMS + p ESI  
 Full ms [100.00-1500.00]

NL: 2.51E5  
 Eagrestis#696-715 RT:  
 1.73-1.75 AV: 3 F: FTMS  
 + p ESI d Full ms2  
 358.33@hcd35.00  
 [50.00-385.00]