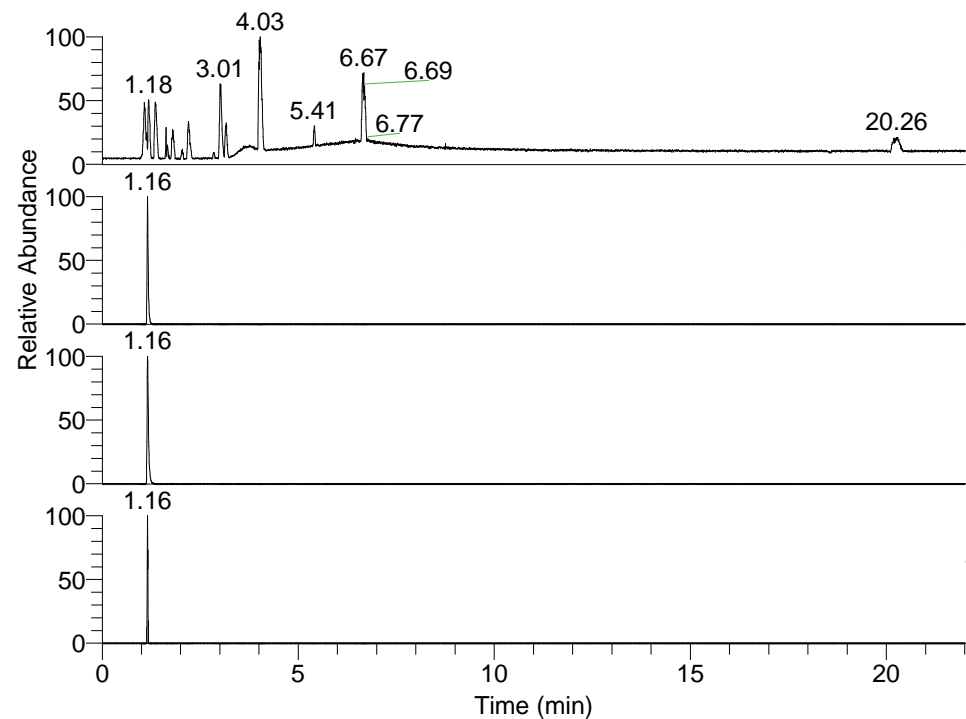


RT: 0.00 - 22.01



NL: 1.58E8
 Base Peak m/z=
 100.00000-1500.00000 F: FTMS + p
 ESI Full ms [100.00-1500.00] MS
 Egrestis_HDX

NL: 5.16E6
 Base Peak m/z=
 362.37788-362.38150 F: FTMS + p
 ESI Full ms [100.00-1500.00] MS
 Egrestis_HDX

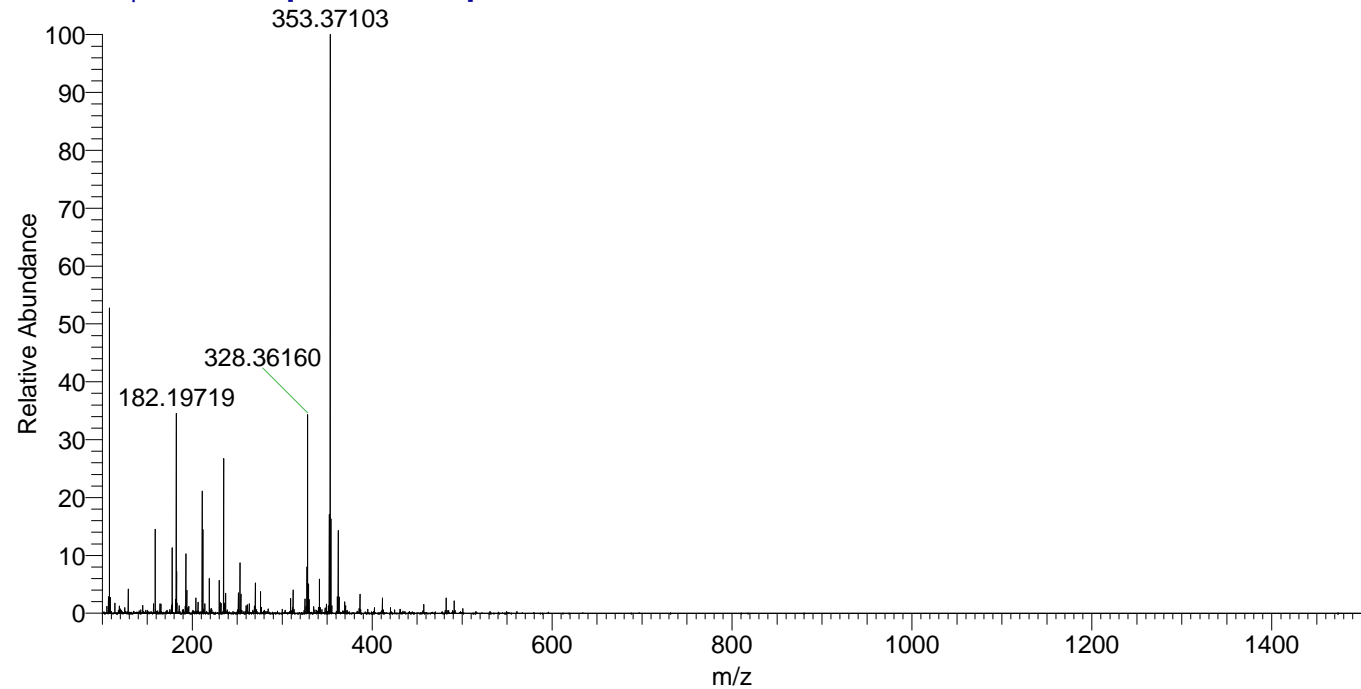
NL: 1.04E7
 Base Peak m/z=
 182.19599-182.19781 F: FTMS + p
 ESI Full ms [100.00-1500.00] MS
 Egrestis_HDX

NL: 8.83E4
 Base Peak m/z=
 477.37644-477.38122 F: FTMS + p
 ESI Full ms [100.00-1500.00] MS
 Egrestis_HDX

Egrestis_HDX#177 RT: 1.16
 T: FTMS + p ESI Full ms [100.00-1500.00]
 m/z= 362.00000-363.00000

m/z	Intensity	Relative	Delta (ppm)	Composition
362.38043	4036832.8	100.00	-0.72	C ₁₉ H ₄₂ ² H ₃ ON ₅
			3.55	C ₁₉ H ₄₀ ² H ₄ ON ₅
			-4.99	C ₁₉ H ₄₄ ² H ₂ ON ₅

Egrestis_HDX #177 RT: 1.16 AV: 1 NL: 2.82E7
 T: FTMS + p ESI Full ms [100.00-1500.00]



Egrestis_HDX #177 RT: 1.16 AV: 1 NL: 2.82E7
 T: FTMS + p ESI Full ms [100.00-1500.00]

