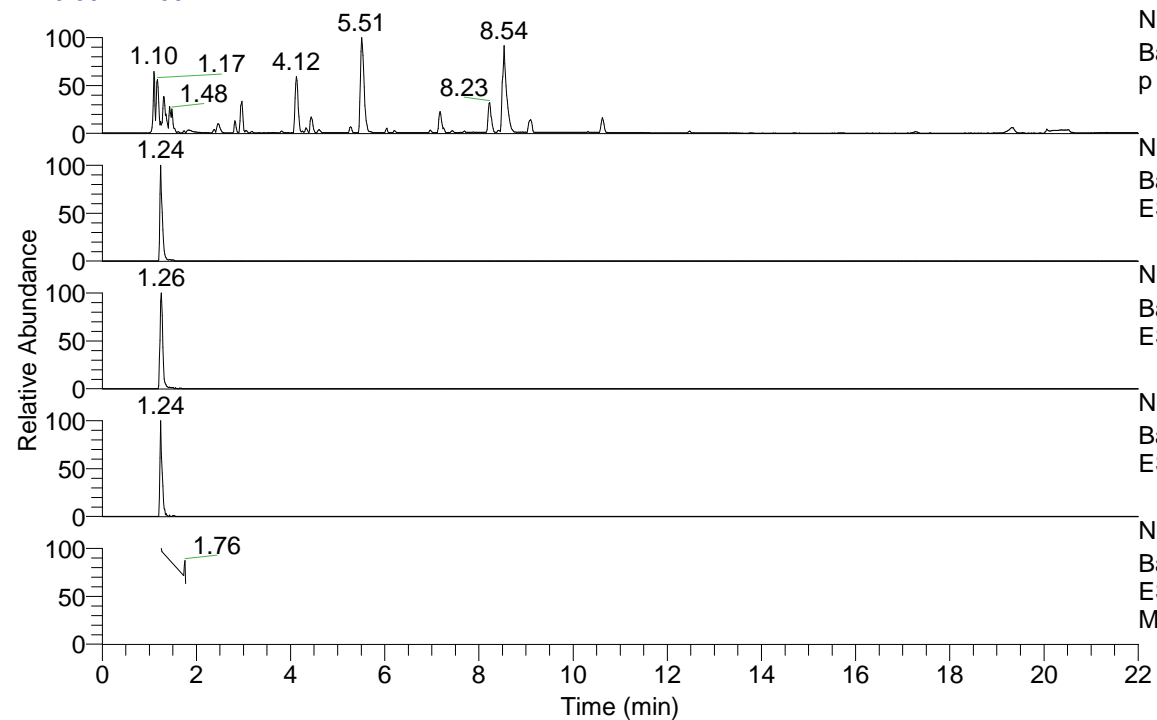


RT: 0.00 - 22.00



NL: 8.71E7
Base Peak m/z= 100.00000-1500.00000 F: FTMS + p ESI Full ms [100.00-1500.00] MS Eagrestis

NL: 1.09E7
Base Peak m/z= 358.35101-358.35817 F: FTMS + p ESI Full ms [100.00-1500.00] MS Eagrestis

NL: 7.16E5
Base Peak m/z= 179.67941-179.68301 F: FTMS + p ESI Full ms [100.00-1500.00] MS Eagrestis

NL: 2.45E5
Base Peak m/z= 472.34273-472.35217 F: FTMS + p ESI Full ms [100.00-1500.00] MS Eagrestis

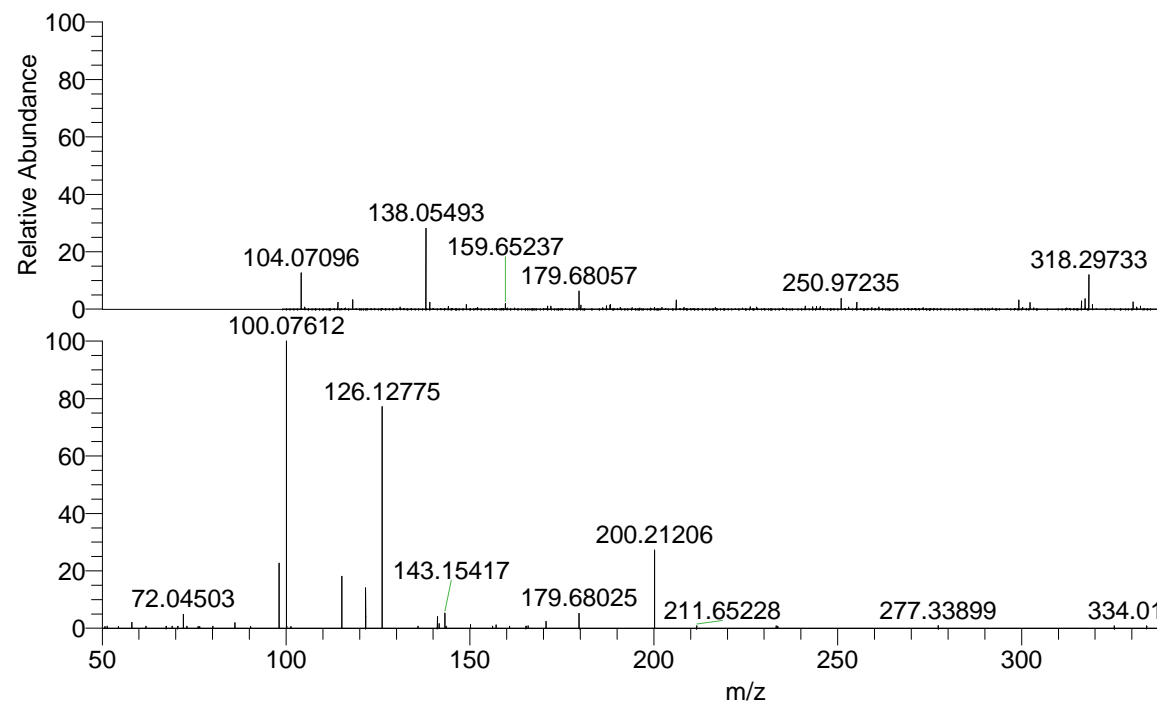
NL: 1.80E5
Base Peak m/z= 50.00000-1500.00000 F: FTMS + p ESI d Full ms2 179.67@hcd35.00 [50.00-385.00] MS Eagrestis

Eagrestis#510-516 RT: 1.25-1.27 AV: 2

F: FTMS + p ESI d Full ms2 179.67 ...

m/z= 50.00000-1000.00000

m/z	Intensity	Relative
50.77903	955.5	0.58
51.35354	1158.2	0.70
54.39238	1012.5	0.61
58.06596	3523.0	2.12
61.90251	1130.9	0.68
67.40728	1215.5	0.73
67.45059	973.6	0.59
69.00334	1179.4	0.71
70.54281	1130.2	0.68
72.04503	8185.0	4.93
73.05554	1151.5	0.69
76.09110	973.3	0.59
76.52042	982.0	0.59
80.03686	1150.8	0.69
86.09720	3277.6	1.97
90.32804	1101.2	0.66
98.09690	38711.3	23.30
100.07612	166126.8	100.00
100.19452	1189.8	0.72
101.31893	1099.4	0.66
115.12316	30769.6	18.52
121.63339	24027.6	14.46
126.12775	128418.8	77.30
135.83684	1245.2	0.75
141.13862	6912.4	4.16
141.63045	2759.3	1.66
143.15417	8826.4	5.31
143.53052	1207.2	0.73
150.14462	2115.6	1.27
156.15080	1208.4	0.73
157.13367	1897.5	1.14
160.74448	1219.1	0.73
165.24453	1245.4	0.75
165.79666	1433.5	0.86
170.67517	4037.7	2.43
179.68025	8878.6	5.34
200.21206	45268.0	27.25
211.65228	1456.0	0.88
233.27520	1390.5	0.84
233.72256	1286.1	0.77
277.33899	1629.6	0.98
325.21107	1397.8	0.84
334.01674	1482.9	0.89



NL: 1.03E7
Eagrestis#505 RT: 1.24 AV: 1 T: FTMS + p ESI Full ms [100.00-1500.00]

NL: 1.66E5
Eagrestis#506-530 RT: 1.25-1.27 AV: 2 F: FTMS + p ESI d Full ms2 179.67@hcd35.00 [50.00-385.00]