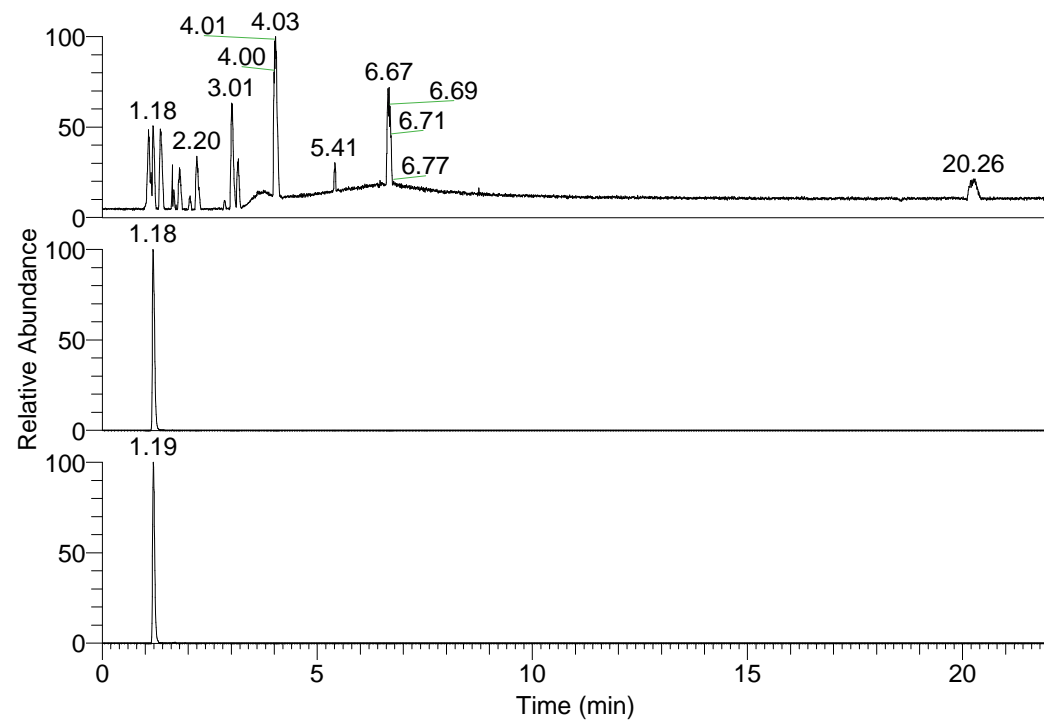


RT: 0.00 - 22.01



NL: 1.58E8
Base Peak m/z=
100.00000-1500.00000 F:
FTMS + p ESI Full ms
[100.00-1500.00] MS
Egrestis_HDX

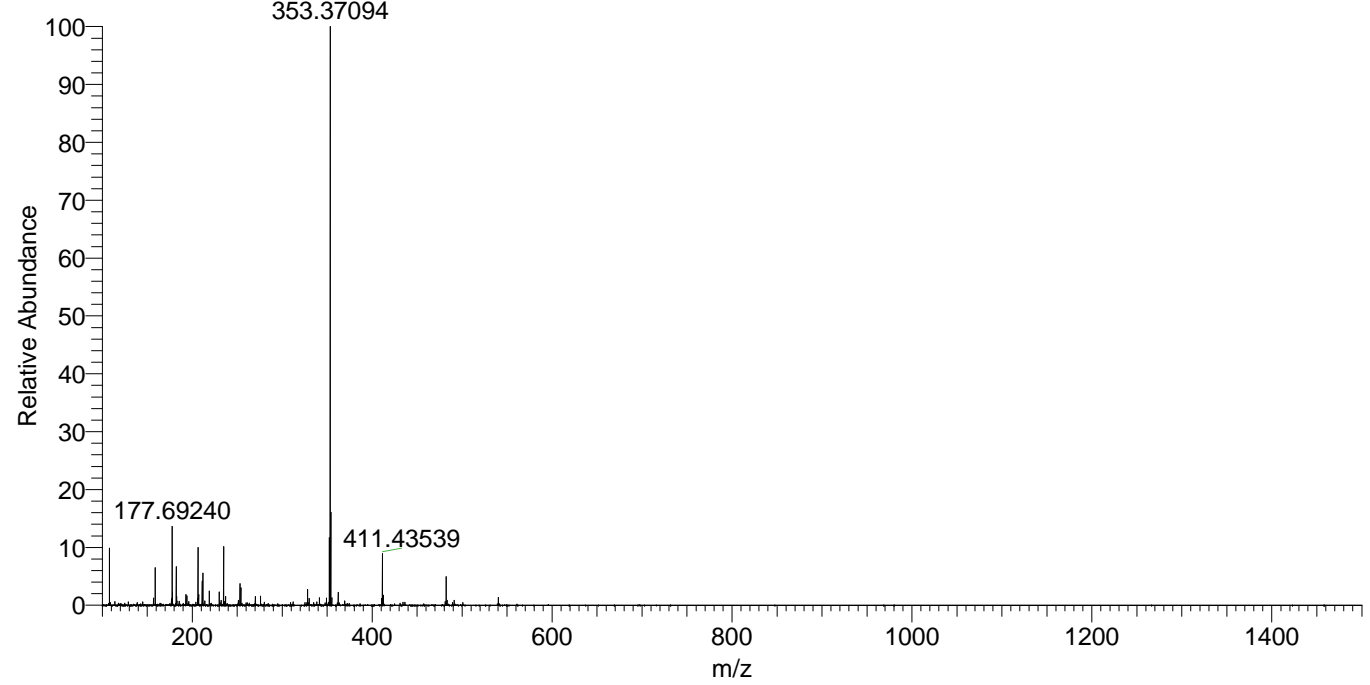
NL: 8.01E7
Base Peak m/z=
353.36851-353.37205 F:
FTMS + p ESI Full ms
[100.00-1500.00] MS
Egrestis_HDX

NL: 1.25E7
Base Peak m/z=
177.69130-177.69308 F:
FTMS + p ESI Full ms
[100.00-1500.00] MS
Egrestis_HDX

Egrestis_HDX#180 RT: 1.18
T: FTMS + p ESI Full ms [100.00-1500.00]
m/z= 353.00000-354.00000

m/z	Intensity	Relative	Delta (ppm)	Composition
353.37094	80111704.0	100.00	-0.94	C ₁₆ H ₃₁ ² H ₈ ON ₇
			3.44	C ₁₆ H ₂₉ ² H ₉ ON ₇

Egrestis_HDX #180 RT: 1.18 AV: 1 NL: 7.86E7
T: FTMS + p ESI Full ms [100.00-1500.00]



Egrestis_HDX #180 RT: 1.18 AV: 1 NL: 7.86E7
T: FTMS + p ESI Full ms [100.00-1500.00]

